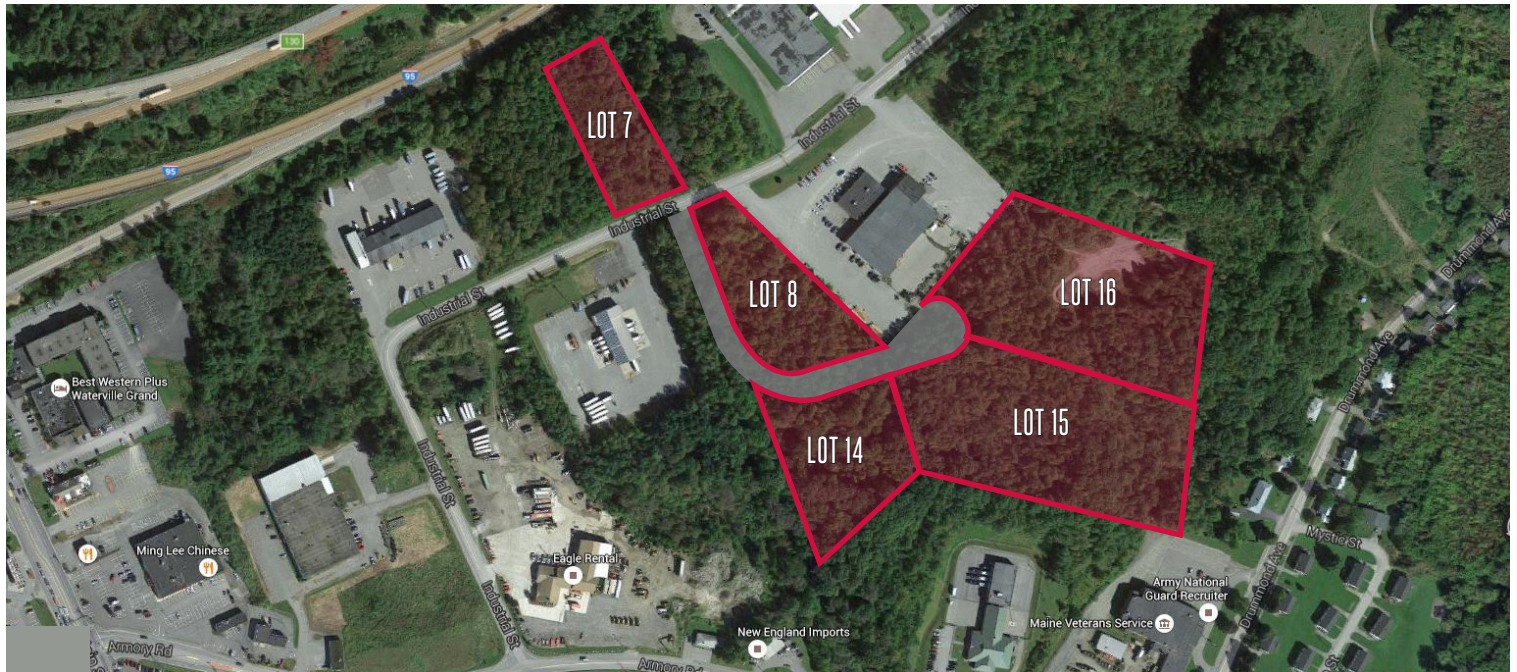


# LAND FOR SALE : WATERVILLE INDUSTRIAL PARK

## Industrial Road - Waterville, Maine 04901



We are pleased to offer five buildable lots at the Waterville Industrial Park. The park abuts Interstate 95 with excellent access via Armory Road and Main Street. 2-20± contiguous acres available. Industrial Road offers water, sewer, electricity and natural gas close by.

**Owner:** Retlew Investments

**Available Lots:**

Lot 7	1.97 acres
Lot 8	2.85 acres
Lot 14	4.08 acres
Lot 15	7.02 acres
Lot 16	6.70 acres

**Zoning:** Industrial

**FOR SALE**

**\$35,000 per acre**

**NAI** The Dunham Group  
Commercial Real Estate Services, Worldwide.

**CONTACT INFORMATION**

**CHARLES CRAIG**

207.773.7100

charlescraig@dunham-group.com

www.dunham-group.com

The information contained herein has been given to us by the owner of the property or other sources we deem reliable. We have no reason to doubt its accuracy, but we do not guarantee it. All information should be verified prior to purchase or lease.

