

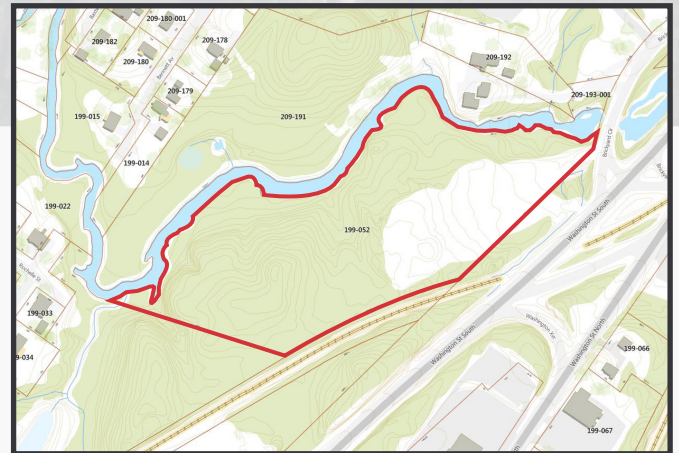
For Sale  
Industrial Land  
9.63± acres | \$300,000

## Industrial Development Land

Washington Street, South  
Auburn, Maine

### Property Highlights

- Great access to downtown Lewiston/Auburn
- 500'+ frontage on Route 202
- 3± miles from Maine Turnpike/I-95, Exit 75
- Excellent visibility



### Property Description

We are pleased to offer for sale 9.63± acres in Auburn. Ideally located off Route 202/Washington Street South, the properties offer easy access to the Auburn Intermodal Transfer Facility, Auburn-Lewiston Airport, and downtown Lewiston/Auburn.

#### Broker Contact

Sam LeGeyt  
207.773.7100  
sam@dunhamgroup.com

# Washington Street South

## Property Overview

Owner	Otis South, LLC
Lot Size	9.63± acres
Assessor's Reference	Map 199, Lot 52
Deed Reference	Book 8896, Page, 131
Zoning	Industrial (ID)

**FOR SALE: \$300,000**

