

For Sale
Industrial Land
9.63± acres | \$275,000

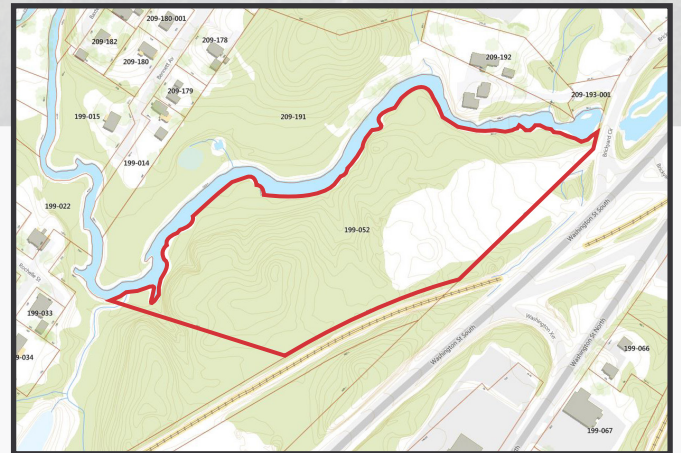


Industrial Development Land

Washington Street, South
Auburn, Maine

Property Highlights

- Great access to downtown Lewiston/Auburn
- 500'+ frontage on Route 202
- 3± miles from Maine Turnpike/I-95, Exit 75
- Excellent visibility



Property Description

We are pleased to offer for sale 9.63± acres in Auburn. Ideally located off Route 202/Washington Street South, the properties offer easy access to the Auburn Intermodal Transfer Facility, Auburn-Lewiston Airport, and downtown Lewiston/Auburn.

Broker Contact

Sam LeGeyt
207.773.7100
sam@dunhamgroup.com

Washington Street South

Property Overview

Owner	Otis South, LLC
Lot Size	9.63± acres
Assessor's Reference	Map 199, Lot 52
Deed Reference	Book 8896, Page, 131
Zoning	Industrial (ID)

FOR SALE: \$275,000

