

# FOR LEASE

## Office Suites

1,100± & 2,700± SF | \$18.50/SF Gross



## One Cumberland Place, Bangor

### Property Highlights

- *Class A office suites*
- *Excellent Downtown Bangor location*
- *Free ample onsite parking*



### Property Description

We are pleased to offer Suites 314 and 316 at One Cumberland Place located on the third floor one of Bangor's premier office buildings. One Cumberland Place is ideally located in Downtown Bangor less than 2± miles from the Maine Turnpike/I-95, Exits 184 and 185. Tenants include: RLC Engineering, Quest Diagnostics, Red Door Title, Robinson Insurance and Financial, Creative Imaging Group, Bangor's Children Dentistry, Cumberland Title, Northern Light Health Foundation, as well as others.



### Broker Contact

TC Haffenreffer  
Sylas Hatch

TC@dunhamgroup.com  
shatch@dunhamgroup.com



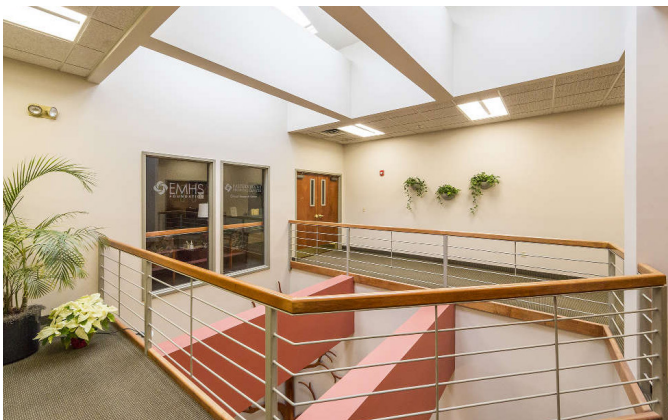
## Property Overview

Landlord	MRM Bangor, LLC
Assessor's Reference	Map 40, Lot 52
Building Size	40,200± SF
Lot Size	3.67± acres
Available Space	Suite 314: 1,100± SF and Suite 316: 2,700± SF
Parking	Free, ample paved parking on-site
Zoning	Urban Service District

## Miscellaneous

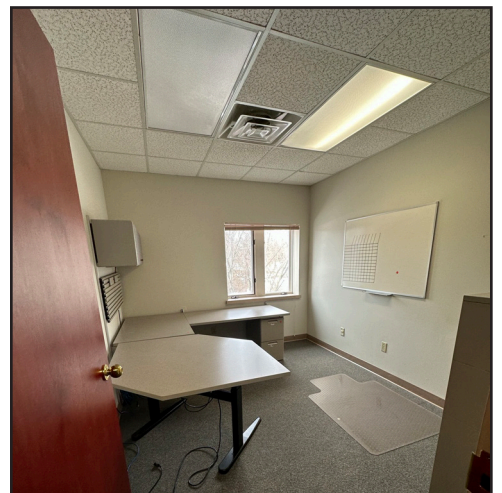
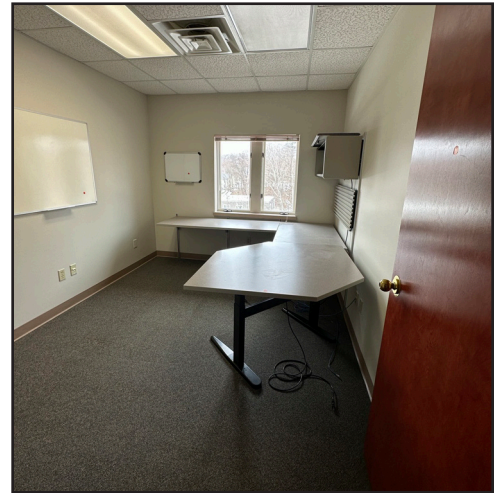
- Fully ADA accessible
- Professional waste disposal and recycling
- Prominent Downtown Bangor location

**FOR LEASE : \$18.50/SF Gross**  
**Tenant is responsible for plugs and lights**





# One Cumberland Place

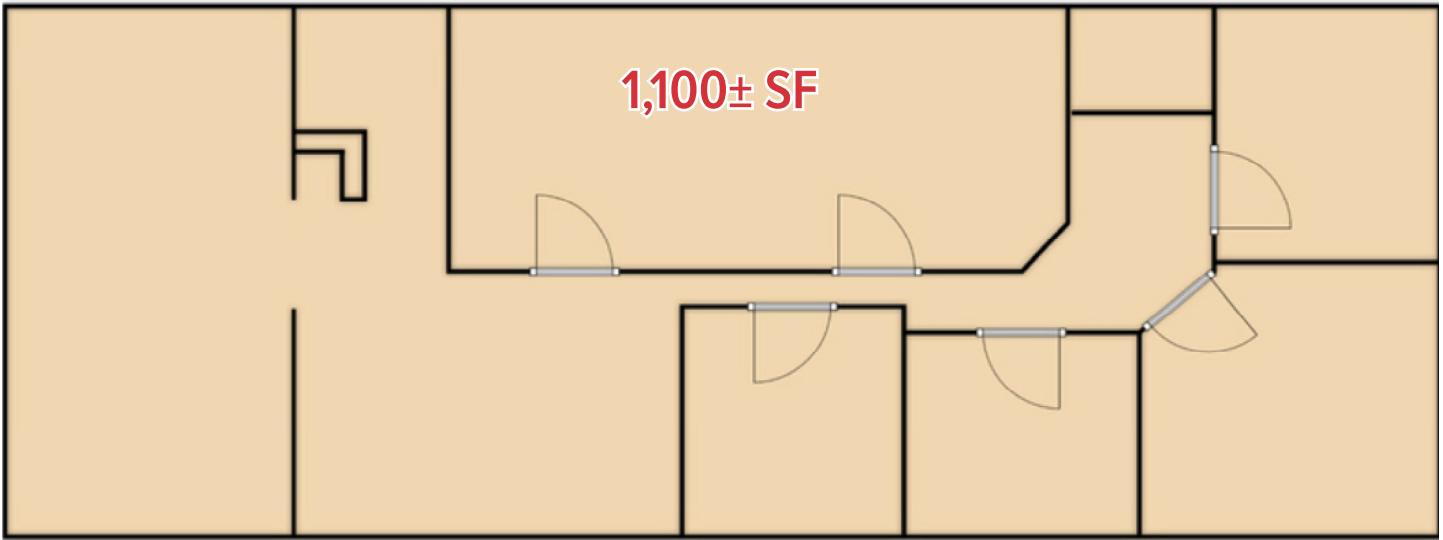


The information contained herein has been given to us by the owner of the property or other sources we deem reliable. We have no reason to doubt its accuracy, but we do not guarantee it. All information should be verified prior to purchase or lease.

10 Dana Street, Portland, ME | 207.773.7100 | [dunhamgroup.com](http://dunhamgroup.com)



## Suite 314



## Suite 316

