

FOR LEASE

Office Suites

925 - 1,635± SF



One Cumberland Place, Bangor

Property Highlights

- *Class A office suites*
- *Excellent Downtown Bangor location*
- *Free ample onsite parking*



Property Description

We are pleased to offer Suites 116, 122 and 306 at One Cumberland Place located in one of Bangor's premier office buildings. One Cumberland Place is ideally located in Downtown Bangor less than 2± miles from the Maine Turnpike/I-95, Exits 184 and 185. Tenants include: RLC Engineering, Quest Diagnostics, Red Door Title, Robinson Insurance and Financial, Creative Imaging Group, Bangor's Children Dentistry, Cumberland Title, Northern Light Health Foundation, as well as others.

TC Haffenreffer | tc@dunhamgroup.com | 207.956.0091
Sylas Hatch | shatch@dunhamgroup.com | 207.485.5511
207.773.7100 | dunhamgroup.com

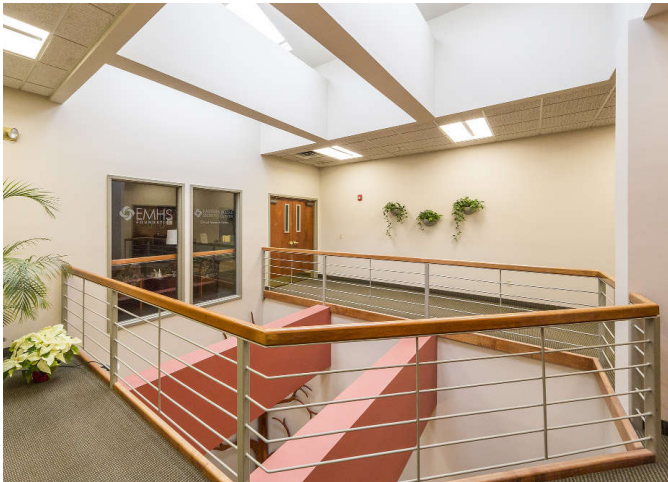


Property Overview

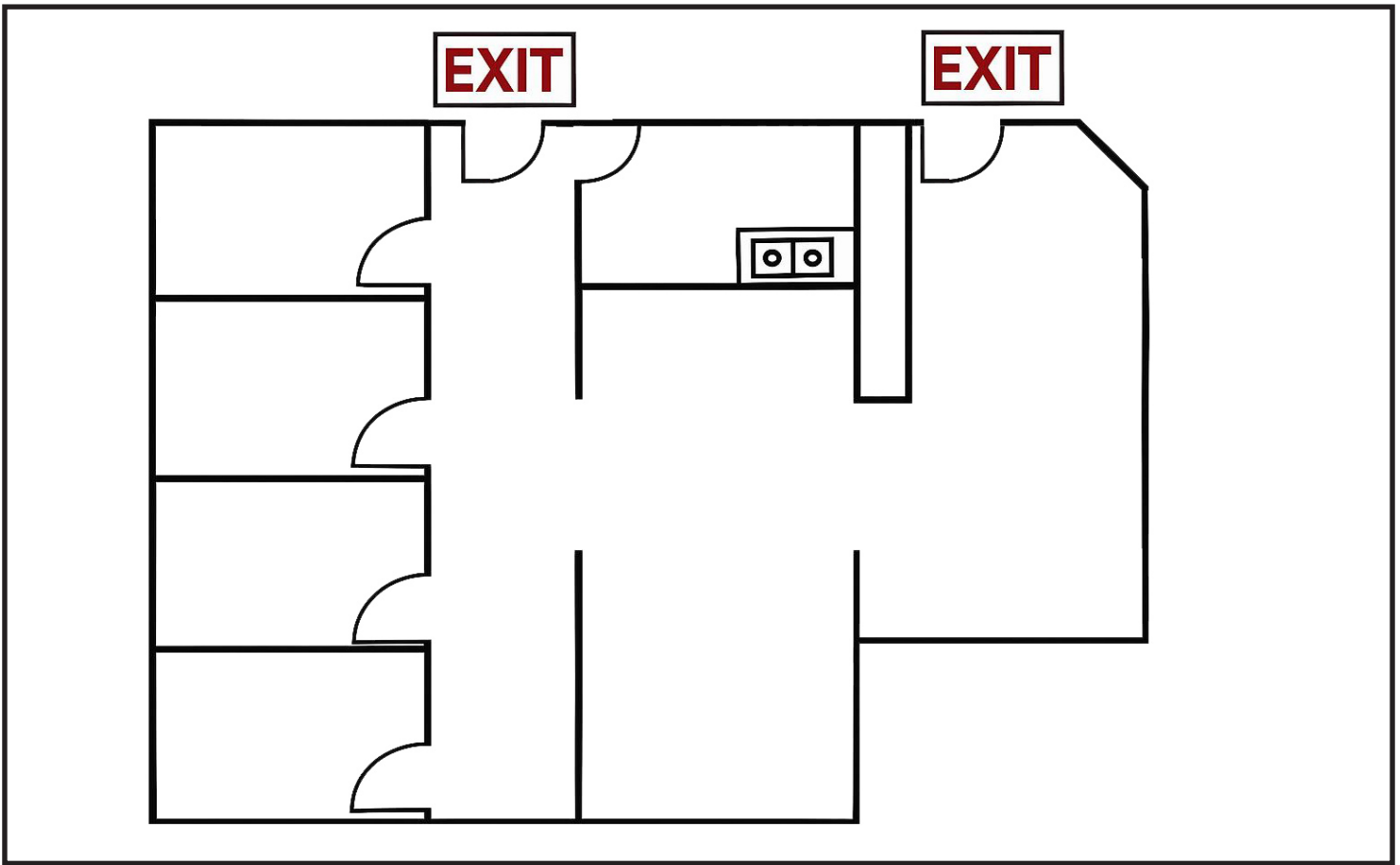
Landlord	MRM Bangor, LLC	
Assessor's Reference	Map 40, Lot 52	
Building Size	40,200± SF	
Lot Size	3.67± acres	
Available Space	Suite 116: 1,600± SF (dentist equipped office)	\$25.00/SF MG
	Suite 122: 1,635± SF (Available 12/1/2025)	\$22.00/SF MG
	Suite 306: 925±SF	\$19.00/SF MG
Parking	Free, ample paved parking on-site	
Zoning	Urban Service District	

Miscellaneous

- Fully ADA accessible
- Professional waste disposal and recycling
- Prominent Downtown Bangor location



Suite 122 - 1,635± SF



The information contained herein has been given to us by the owner of the property or other sources we deem reliable. We have no reason to doubt its accuracy, but we do not guarantee it. All information should be verified prior to purchase or lease.