

For Lease
Office Suites

661 - 2,500± SF



One Cumberland Place

Bangor, Maine

Property Highlights

- Class A office suites
- On-site professional management
- Excellent Downtown Bangor location



Property Description

We are pleased to offer multiple Class A office suites for lease in one of Bangor's premier office buildings. One Cumberland Place is ideally located in Downtown Bangor less than 2± miles from the Maine Turnpike/I-95. Tenants include Robinson Insurance and Financial, Creative Imaging Group, Bangor Children's Dentistry, Cumberland Title, Northern Light Health Foundation as well as others.

Broker Contact

TC Haffenreffer

Sylas Hatch

tc@dunhamgroup.com

shatch@dunhamgroup.com



10 Dana Street, Suite 400
Portland, ME 04101
207.773.7100
dunhamgroup.com

One Cumberland Place

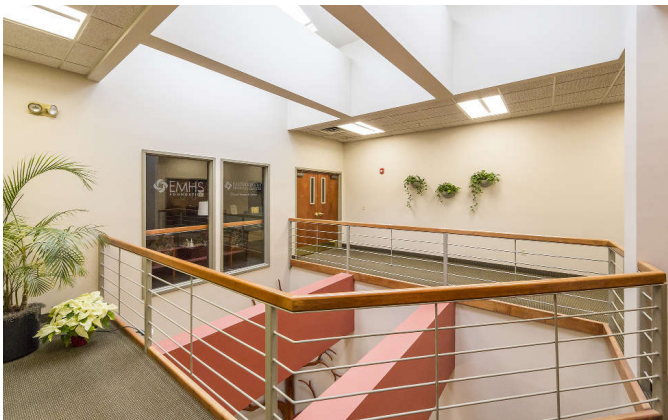
Property Overview

Landlord	RSC Realty Holdings	
Assessor's Reference	Map 40, Lot 52	
Building Size	40,200± SF	
Lot Size	3.67± acres	
Available Space	Suite 108 : 2,500± SF Suite 308/310: 2,475± SF	Suite 204: 1,025± SF Suite 212/214: 661± SF & 1,501± SF (2,162± SF)
Space breakdown	See attached floor plans	
Parking	Free ample paved parking on-site	
Zoning	Urban Service District	

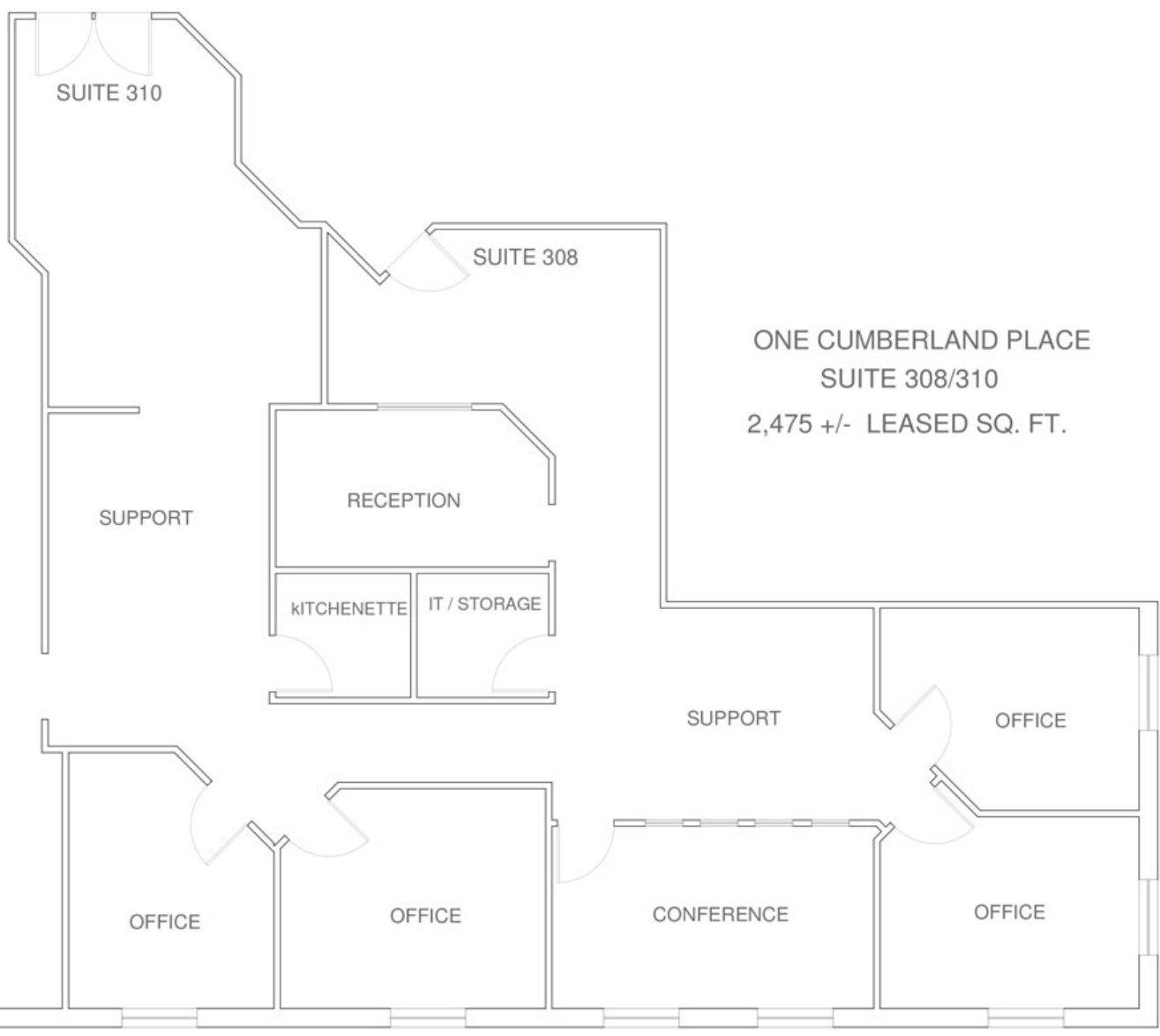
Miscellaneous

- Fully ADA accessible
- Access to a shared conference room
- Central mailroom
- Professional waste disposal and recycling
- Prominent Downtown Bangor location

FOR LEASE : \$15.00 - 18.00/SF MG
Tenant responsible for plugs and lights.

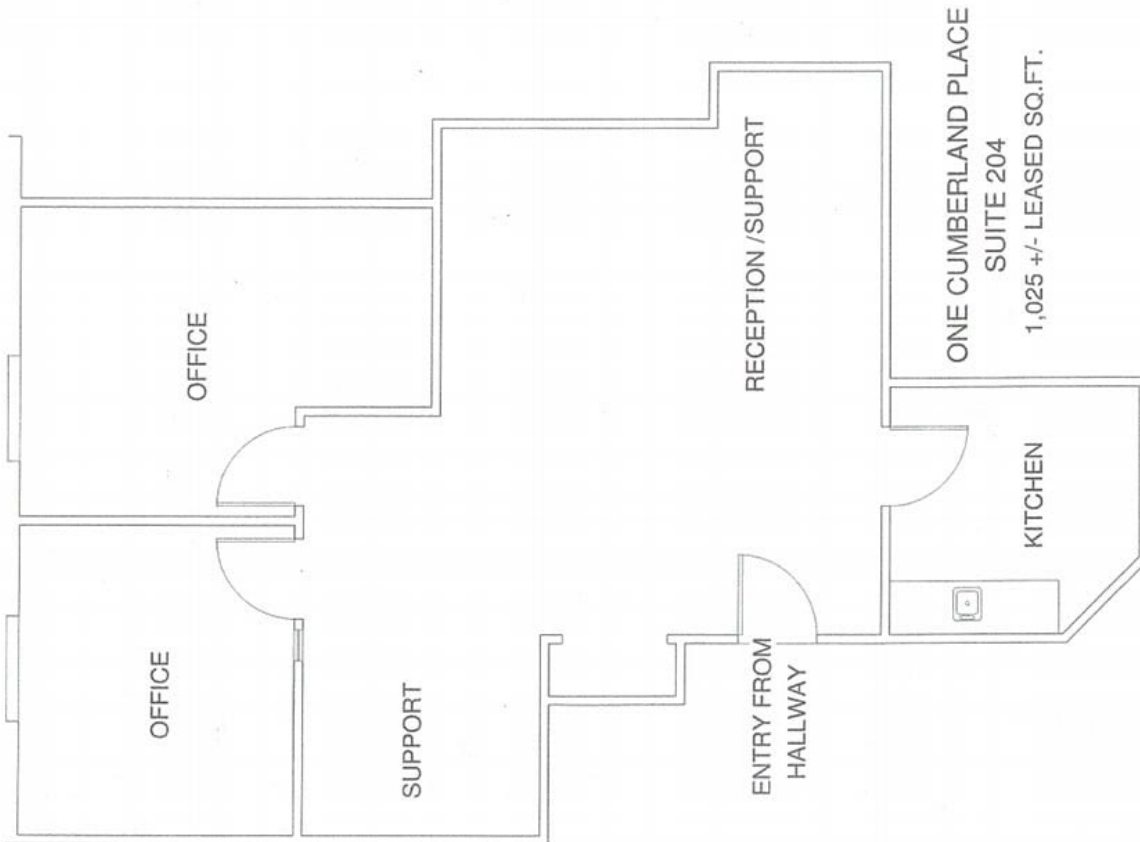
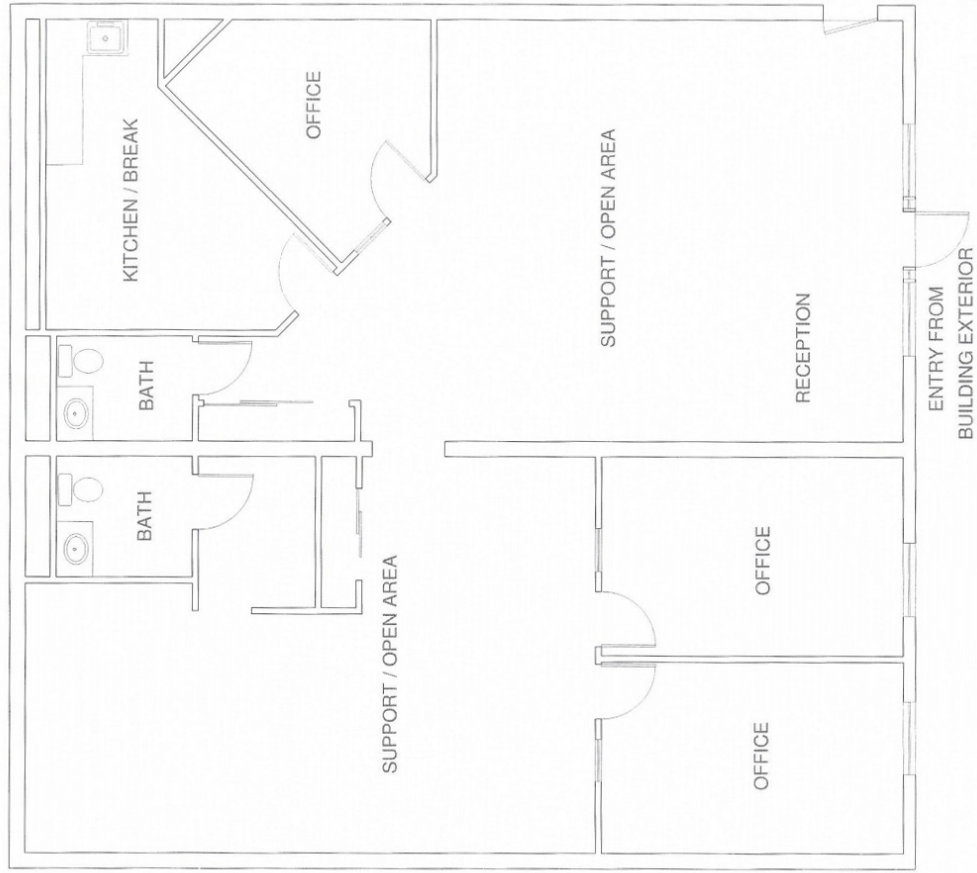


One Cumberland Place

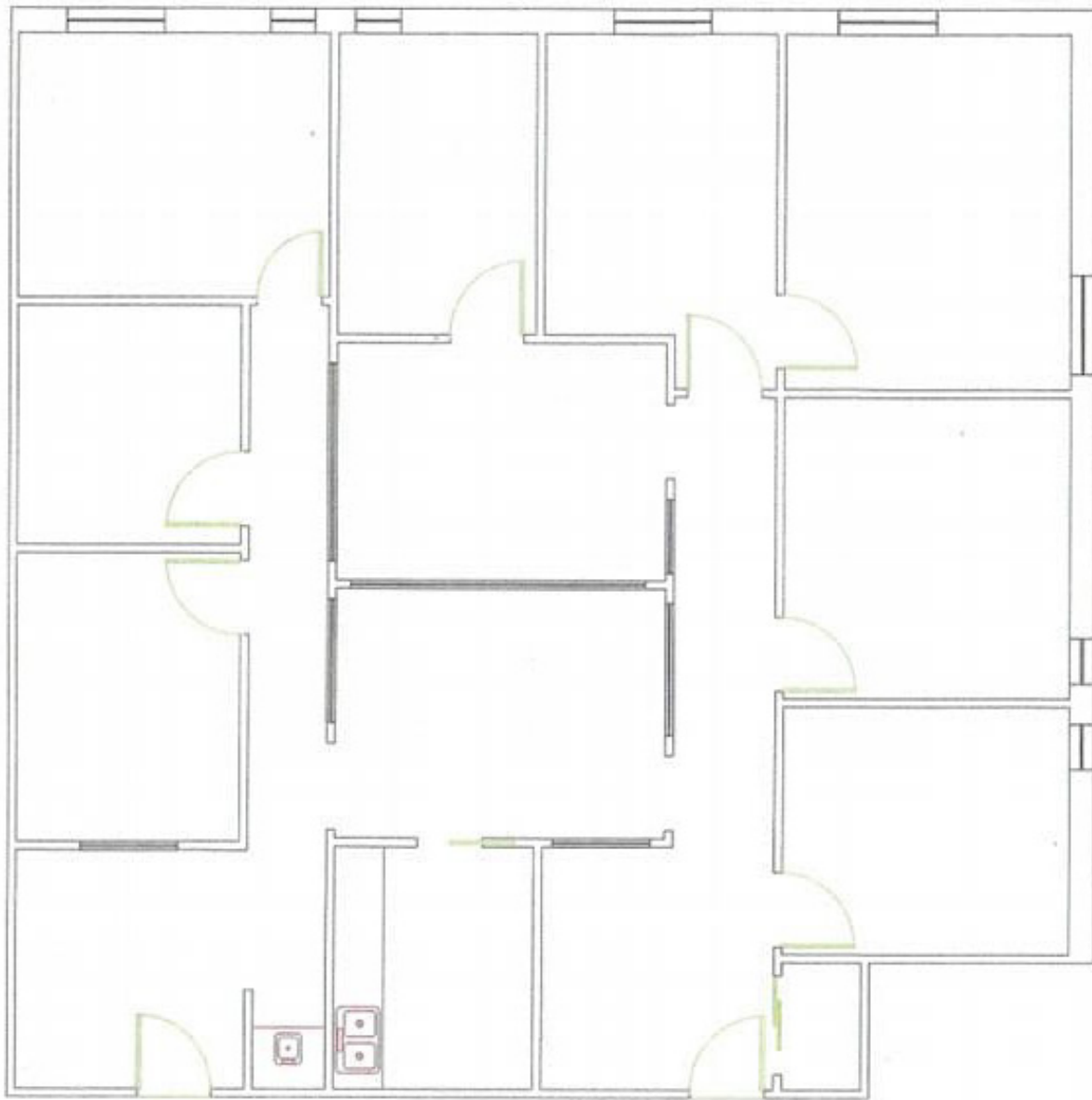


ONE CUMBERLAND PLACE
SUITE 308/310
2,475 +/- LEASED SQ. FT.

ONE CUMBERLAND PLACE
SUITE 108
2,500 +/- LEASED SQ. FT.



ONE CUMBERLAND PLACE
SUITE 204
1,025 +/- LEASED SQ.FT.



SUITE 212

661± SF

SUITE 214

1501± SF