

FOR LEASE
Industrial Build-To-Suit
9,890 - 20,400± SF



Eastview Parkway, Saco

Property Highlights

- 9,890 - 20,400± SF Build-to-Suit Opportunity
- Easily accessible Route One Location
- Fully customizable to tenant's needs and specifications

Property Description

Delivering a rare opportunity to create a purpose-built industrial facility tailored precisely to your operational requirements. This premium build-to-suit development offers flexibility, efficiency, and scalability—designed from the ground up to support your long-term growth. Strategically located with excellent connectivity to major highways, transportation corridors, and labor pools, the site provides seamless logistics access and strong regional reach. Zoning supports a wide range of industrial uses including manufacturing, warehousing, distribution, assembly, and specialized operations.

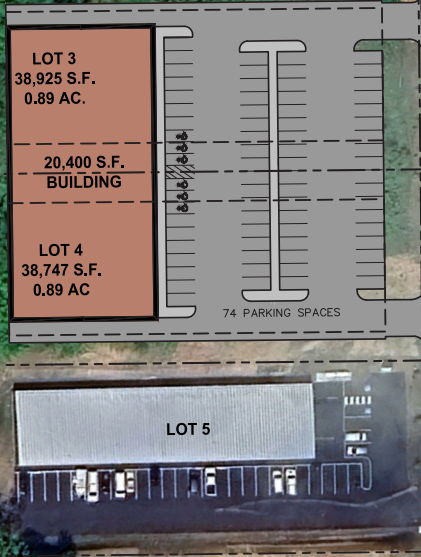


Sam LeGeyt, SIOR | sam@dunhamgroup.com
Jim Harnden | jim@dunhamgroup.com
207.773.7100 | www.dunhamgroup.com

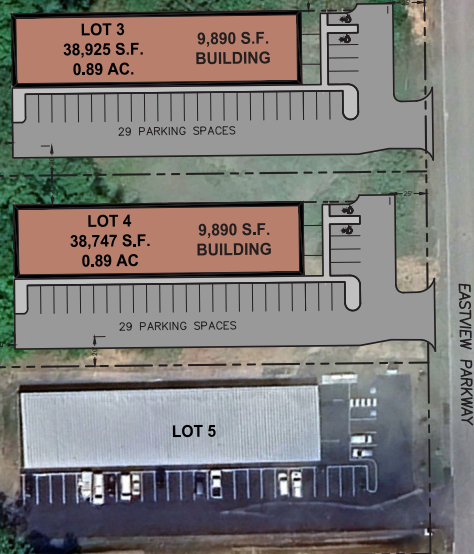


Eastview Parkway

CONCEPT 1



CONCEPT 2



Property Overview

Site Size	1.78± acres
Possible Building Size	9,890 - 20,400± SF
Assessor's Reference	Map 64, Block 6-2, Lots 3 & 4
Zoning	Park North Contract Zone
Building Construction	To-be-built
Utilities	Municipal water and sewer, propane heat
Parking	Sufficient space to meet city parking ratio requirements

SEE BROKER FOR PRICING

The information contained herein has been given to us by the owner of the property or other sources we deem reliable. We have no reason to doubt its accuracy, but we do not guarantee it. All information should be verified prior to purchase or lease.