

# FOR LEASE

Office/Medical Space

2,014± SF | \$14.00/SF MG



## 885 Portland Road, Saco

### Property Highlights

- *Excellent signage potential on Route One*
- *Highly visible Route One location*
- *Ample, on-site parking*
- *Newly renovated office space*



### Property Description

We are pleased to offer for lease 2,014± SF of office/medical office space located on the second floor of 885 Portland Road in Saco, Maine.



#### Broker Contact

Frank O'Connor CCIM, SIOR

Sam LeGeyt

foconnor@dunhamgroup.com

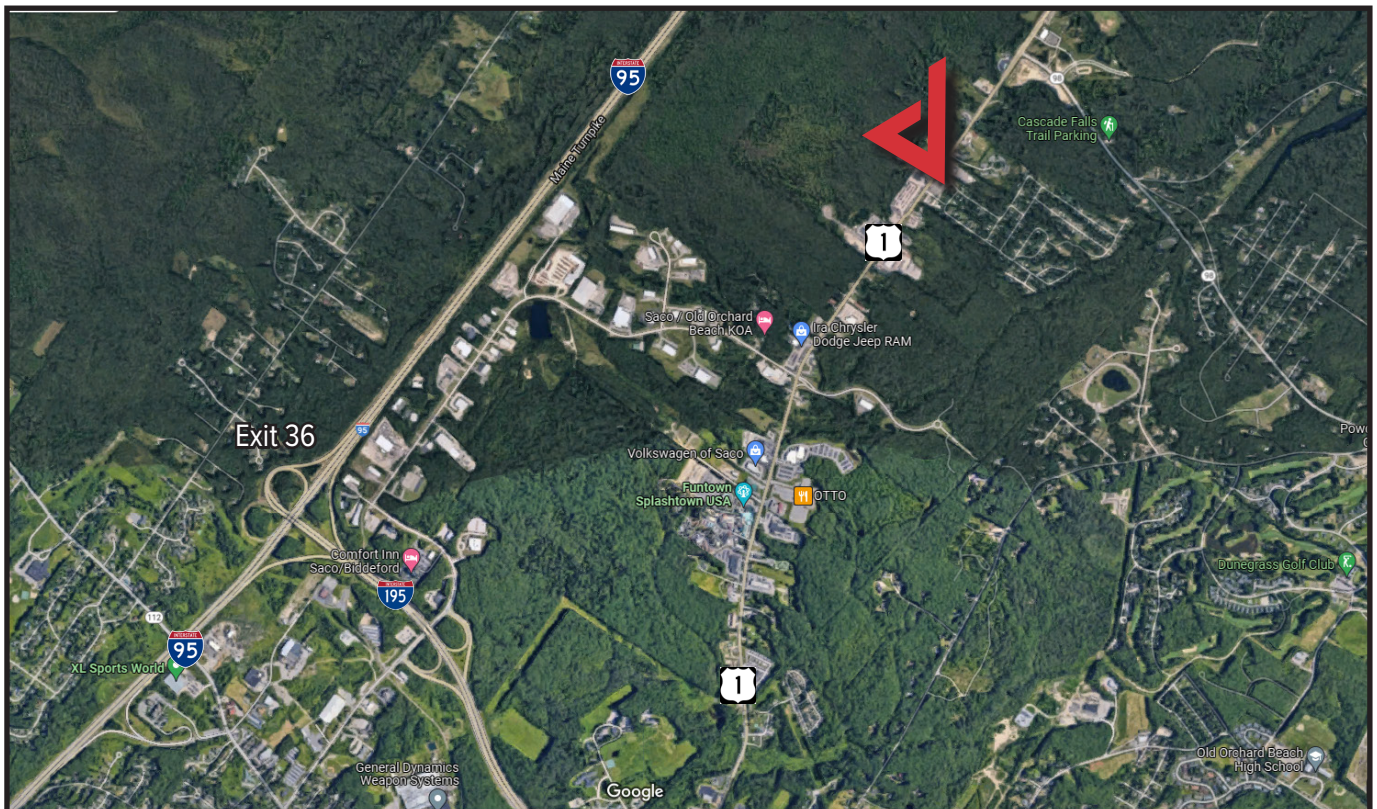
sam@dunhamgroup.com

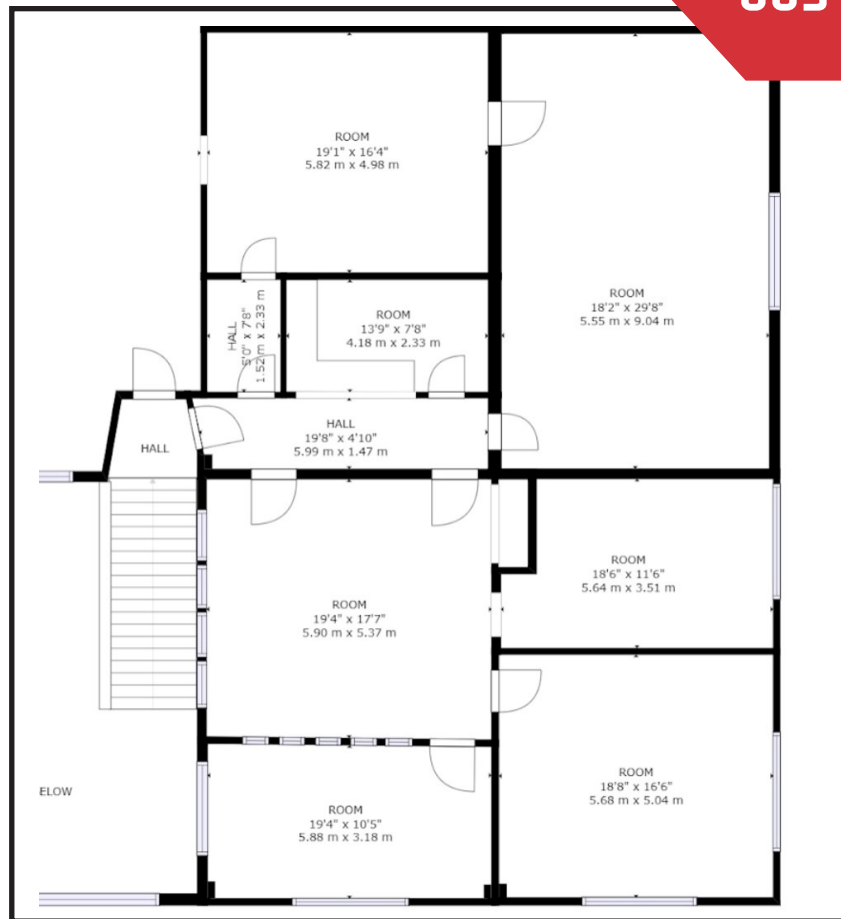


## Property Overview

Building Size	21,120± SF
Lot Size	1.7± acres
Available Space	2,104± SF
Floor	Second
Zoning	B6
Year Built	1998
Building Construction	Brick and Aluminum siding
Flooring	Carpet and tile
Bathrooms	One (1)
Parking	Ample, on-site parking
Traffic Count	~15,140 cars/day
Availability	Immediately

**FOR LEASE : \$14.00/SF MG**





The information contained herein has been given to us by the owner of the property or other sources we deem reliable. We have no reason to doubt its accuracy, but we do not guarantee it. All information should be verified prior to purchase or lease.