

For Lease Industrial Property

24,000± SF | 19± acres



88 Main Street - Cannabis Friendly!

Detroit, Maine

Property Highlights

- 7 Drive-in Doors
- 600 Amp, 3 Phase
- Zoned for Cannabis
- Tier 3 license



Property Description

We are pleased to offer this 24,000± SF industrial building on 19± acres for lease. The building is suited for an owner/user or investor and offers 7 drive-in doors, 600 Amp, 3 Phase power and ample parking. The site is located 5± minutes from I-95 Exit 157 in Newport.

Broker Contact

TC Haffenreffer

Sylas Hatch

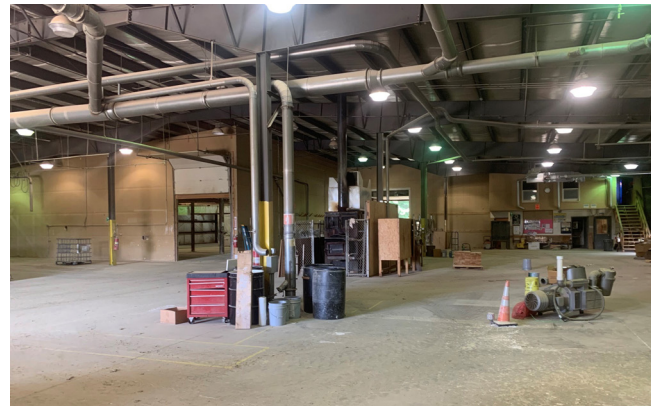
tc@dunhamgroup.com

shatch@dunhamgroup.com

Property Overview

Owner	Walpole Woodworkers
Building Size	24,000± SF
Lot Size	19± acres
Assessor's Reference	Map 8, Lot 39
Deed Reference	Book 0892, Page 0770
Zoning	Rural
Year Built	1999
Construction	Steel-frame
Roof	Metal
Flooring	Concrete
Utilities	Private water and sewer
Ceiling Height	16'-19'±
Loading Docks	One (1) outdoor dock
Drive-in OHDs	Seven (7) drive-in doors
HVAC	Oil Modine blowers
Electrical	3 Phase, 600 Amp
Sprinkler	None
Bathroom	One (1)
Parking	Ample on-site

FOR LEASE : \$5.50/SF NNN - CANNABIS : \$9.00/SF NNN



The information contained herein has been given to us by the owner of the property or other sources we deem reliable. We have no reason to doubt its accuracy, but we do not guarantee it. All information should be verified prior to purchase or lease.