

For Lease Industrial Property

4,400 - 20,616± SF | \$7.50/SF NNN

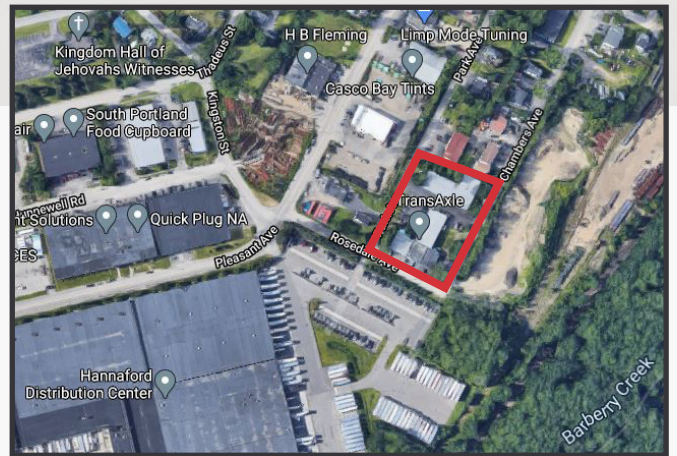


85 Chambers Avenue

South Portland, Maine

Property Highlights

- Building 1: 5,908 - 11,816 SF
- Building 2: 4,400 - 8,800 SF
- Great Rumery Park Location
- Cannabis-Friendly



Property Description

We are pleased to offer two industrial buildings on 1.1 acres for lease in South Portland's Rumery Industrial Park. 4,400 - 20,616± SF of warehouse/manufacturing space is available. The property features 600 Amp, 3 Phase power, 13 total drive-in doors, and is cannabis-friendly.

Broker Contact

TC Haffenreffer

Sylas Hatch

tc@dunhamgroup.com

shatch@dunhamgroup.com

Property Overview

Owner	One Duval, LLC
Lot Size	1.1± acres
Available Space	Building 1: 5,908 - 11,816± SF Building 2: 4,400 - 8,800± SF
Assessor's Reference	Map 40, Block 045, Lot A
Zoning	I - Industrial
Year Built	1987
Construction	Steel
Roof	Metal, sloped
Siding	Metal
Flooring	Concrete
Utilities	Municipal water and sewer
Ceiling Height	14'-16'
Drive-in OHDs	Building 1: Seven (7) Building 2: Six (6)
Electrical	600 Amp, 3 Phase
Sprinkler System	Building 1: Wet system Building 2: None
Bathrooms	Building 1: Two (2) Building 2: Two (2)
Parking	Ample on-site

FOR LEASE : \$7.50/SF NNN - See broker for pricing on cannabis-related use



