

FOR LEASE

Office Space

1,000± SF | \$18.00/SF NNN



84 Cove Street, Portland

Property Highlights

- *Attractive East Bayside location*
- *On-site parking*
- *Easy access to I-295*



Property Description

We are pleased to offer 1,000± SF of office space for lease at 84 Cove Street in Portland. Join Portland Power Yoga and Chase Leavitt in the highly desirable East Bayside neighborhood. East Bayside is one of Portland's most desirable neighborhoods due to its location, easy access, and free parking.



Broker Contact

Chris Craig

chris@dunhamgroup.com

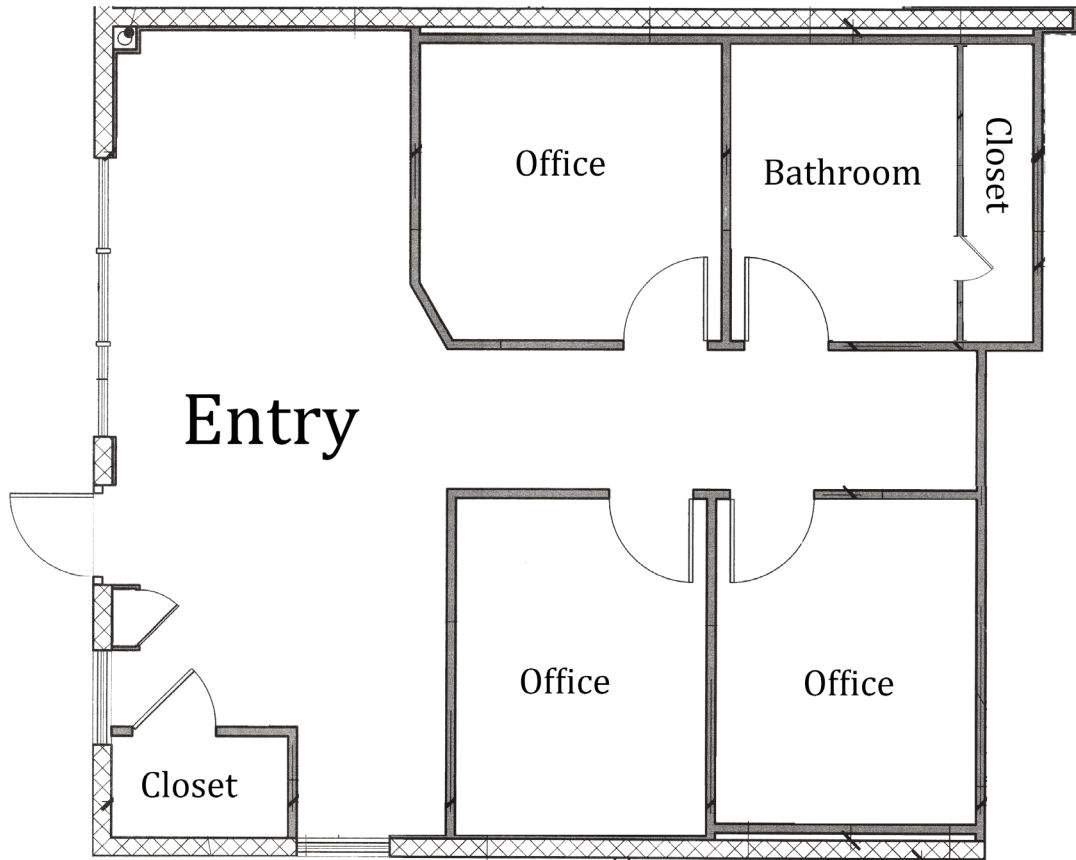
207.773.7100

Property Overview

Owner	Sleepy Hollow Development, Inc.
Assessor's Reference	Map 10, Lot H0007
Zoning	Industrial Low Impact (IL)
Building Size	13,524± SF
Available Space	1,000± SF
Year Built	1959
Construction	Masonry block and brick
Roof	Rubber membrane (new 2008)
Floor	Hardwood & carpet
Lighting	LED fixtures
Utilities	Water, sewer, and natural gas
HVAC	Gas fired central HVAC
Bathrooms	One (1)
Sprinkler System	Wet System
Availability	April 2024

FOR LEASE : \$18.00/SF NNN - NNN Expenses: Approx. \$4.50/SF





The information contained herein has been given to us by the owner of the property or other sources we deem reliable. We have no reason to doubt its accuracy, but we do not guarantee it. All information should be verified prior to purchase or lease.