

For Lease
Office Building
30,000± SF | \$14.00/SF NNN



75 Darling Avenue

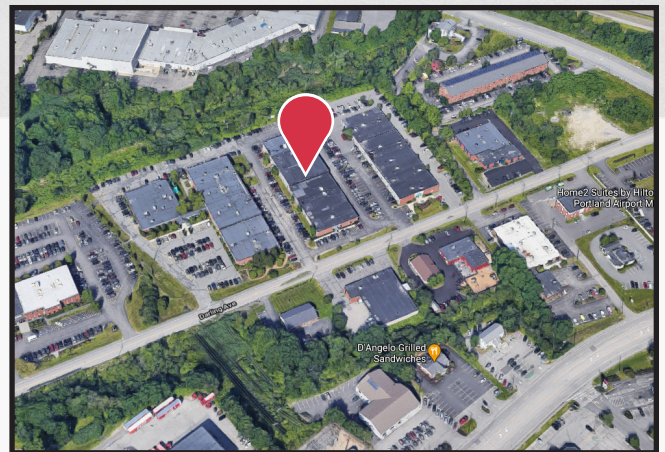
South Portland, Maine

Property Highlights

- Excellent access to I-95 and I-295
- Ample on-site parking
- Subdividable down to 6,000 SF

Property Description

We are pleased to offer up to 30,000± SF of office space for lease at 75 Darling Avenue in South Portland. The space is recently renovated and includes a fully equipped workout room and cafeteria with commercial kitchen (both of which can be leased separately). Convenient location in the Maine Mall area of South Portland, near all area amenities and interstate spurs.



Broker Contact

Frank O'Connor, CCIM, SIOR
foconnor@dunhamgroup.com
207.773.7100

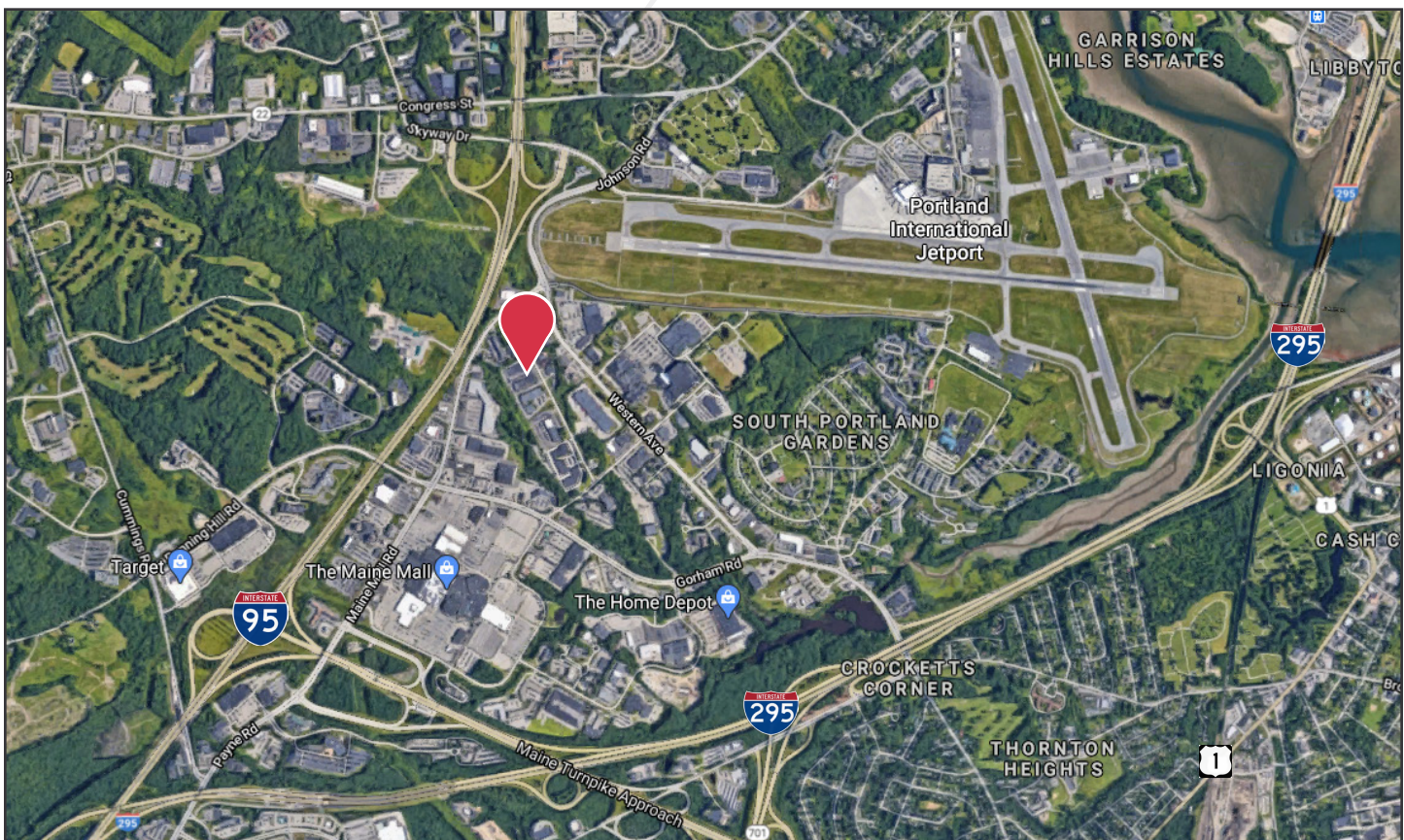
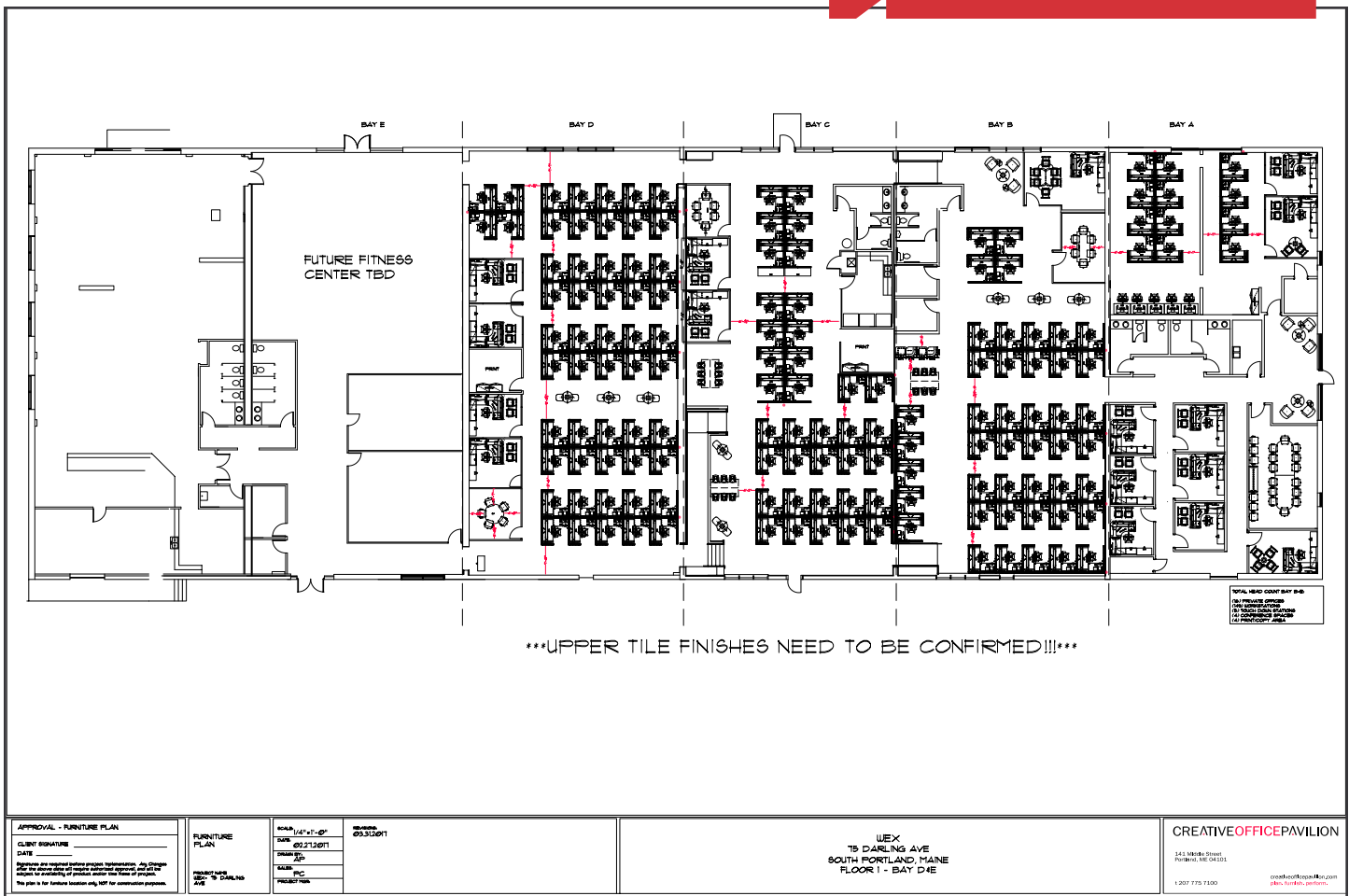
Property Overview

Owner	Tree House, LLC
Building Size	30,000± SF
Lot Size	2.1± acres
Assessor's Reference	Map 48, Lot 017
Zoning	CG - General Commercial
Available Space	6,000 - 30,000± SF
Building Age	1977, totally renovated with upgraded systems in 2017
Utilities	Public water and sewer
Building Construction	Masonry
Roof	EDPM rubber
Siding	Brick veneer
HVAC	Gas-fired
Sprinkler System	Full coverage
Parking	95 paved spaces

FOR LEASE : \$14.00/SF NNN



75 Darling Avenue



The information contained herein has been given to us by the owner of the property or other sources we deem reliable. We have no reason to doubt its accuracy, but we do not guarantee it. All information should be verified prior to purchase or lease.