

For Lease
Retail Building

12,102± SF

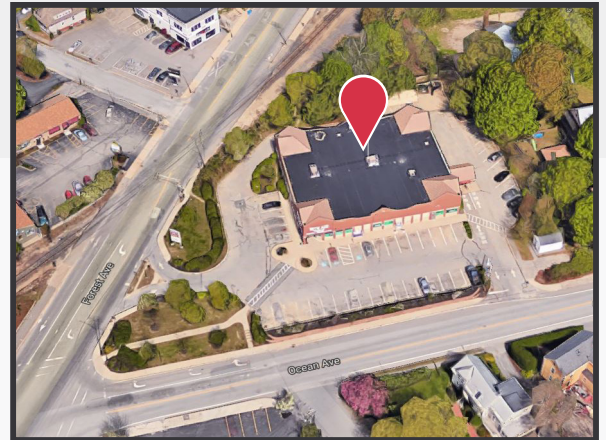


Former Rite Aid

701 Forest Avenue
Portland, Maine

Property Highlights

- Very attractive brick and stone building located on one of Portland's busiest arteries
- Combined traffic count on Forest Avenue and Ocean Avenue is 27,830± vehicles per day



Property Description

We are pleased to offer this 12,102± SF attractive former Rite Aid building which includes drive-thru. Excellent signage opportunities and exposure and access on Forest Avenue and Ocean Avenue.

Broker Contact

Charlie Craig

207.773.7100

charlescraig@unhamgroup.com

www.dunhamgroup.com

Property Overview

Building Size	12,102± SF
Land Area	1.55± acres
Deed Reference	Book 14456, Page 112
Taxes	\$43,635.58 (2017-2018)
Zoning	Retail and professional services
Building Age	1998
Construction	Brick and stone
Heat/HVAC	Electric heat pump, central A/C
Utilities	Municipal water and sewer, natural gas
Parking	Generous parking with drive-thru
Access	Accessible from both Forest Avenue and Ocean Avenue
Available	Immediately

FOR LEASE : \$21.20/SF NNN

