

For Lease
Office/Medical Space

1,160± SF | \$14.50/SF NNN



7 Portland Farms Road

Scarborough, Maine

Property Highlights

- Move-In Ready
- Ample On-Site Parking
- Efficient Floorplan
- Professionally Managed

Property Description

We are pleased to offer an 1,160 SF office suite for lease at 7 Portland Farms Road in Scarborough. Located off Route One, the space is ideal for a small medical/office user. The property is located approximately 2 miles from Maine Turnpike/I-95 and I-295.



Broker Contact

Tom Moulton, CCIM, SIOR

Katie Allen, Esq.

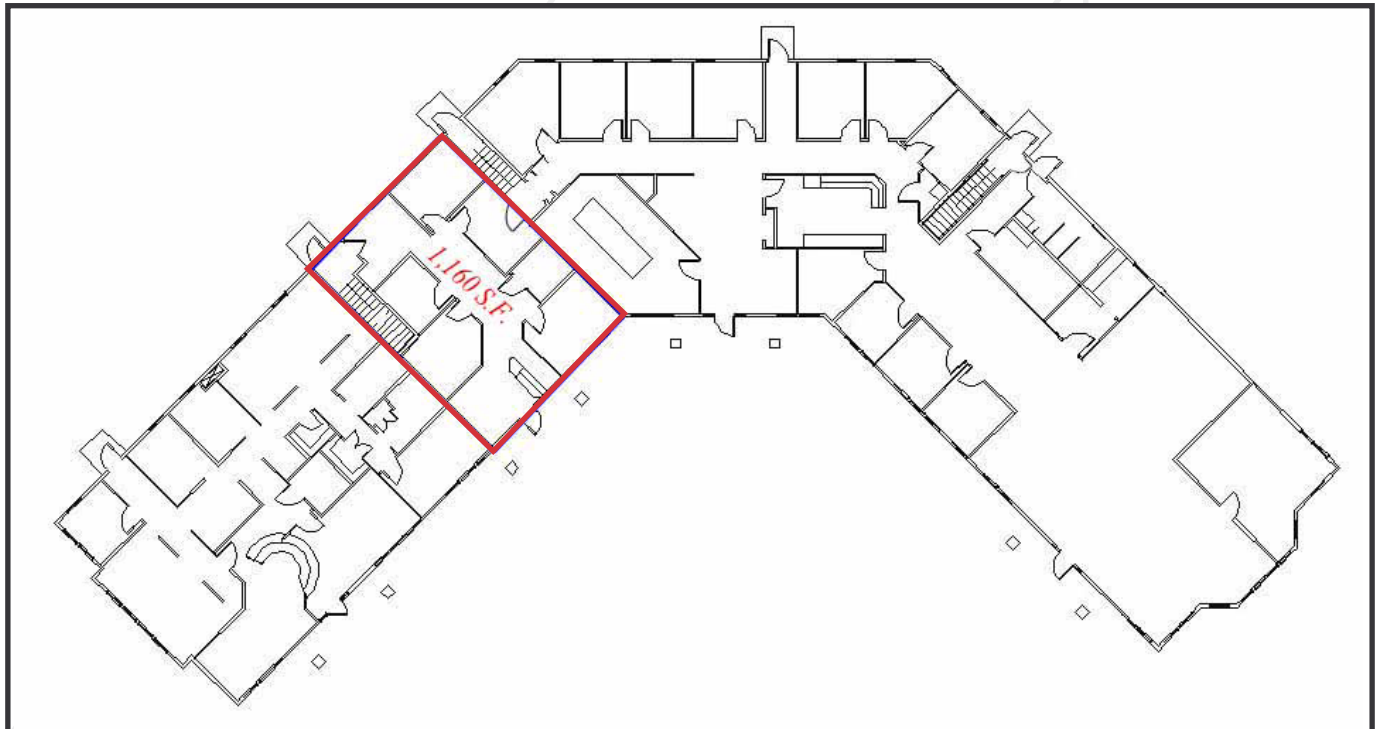
tmoulton@dunhamgroup.com

katie@dunhamgroup.com

Property Overview

Building Size	8,897± SF
Available Space	1,160± SF
Assessor's Reference	Map U045, Lot 13A
Zoning	TVC
Building Construction	Wood framed
HVAC	Gas-fired, forced hot air
Utilites	Municipal water and sewer
Sprinkler	Yes, full coverage wet system
Parking	Ample, on-site
Availability	Immediately
Miscellaneous	<ul style="list-style-type: none">- Ample dry basement storage at no additional cost- Signage above suites entrance

FOR LEASE : \$14.50/SF NNN
NNN Expenses: \$7.00/SF



7 Portland Farms Rd

