

FOR LEASE

Office/Medical Space

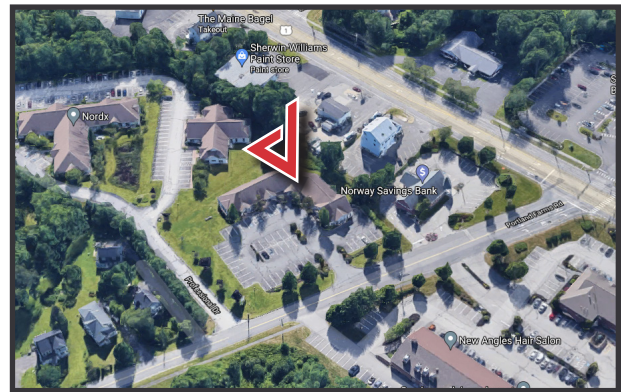
1,977± SF | \$14.00/SF NNN



7 Portland Farms Road, Scarborough

Property Highlights

- *Move-In Ready*
- *Ample On-Site Parking*
- *Efficient Floorplan*
- *Professionally Managed*



Property Description

We are pleased to offer a 1,977± SF office suite for lease at 7 Portland Farms Road in Scarborough. Located off Route One, the space is ideal for a small medical/office user. The property is located approximately 2 miles from Maine Turnpike/I-95 and I-295.

Tom Moulton, CCIM, SIOR | tmoulton@dunhamgroup.com

Katie Allen Breggia | katie@dunhamgroup.com

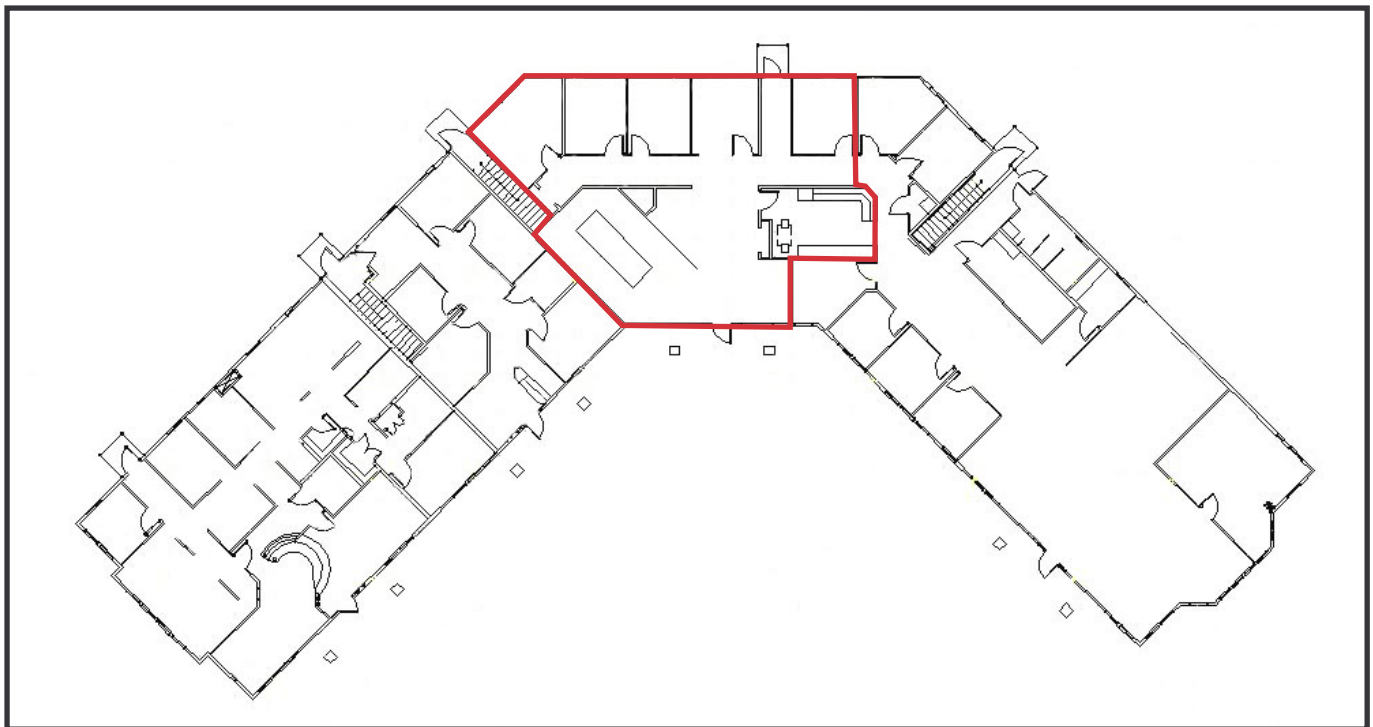
207.773.7100 | www.dunhamgroup.com

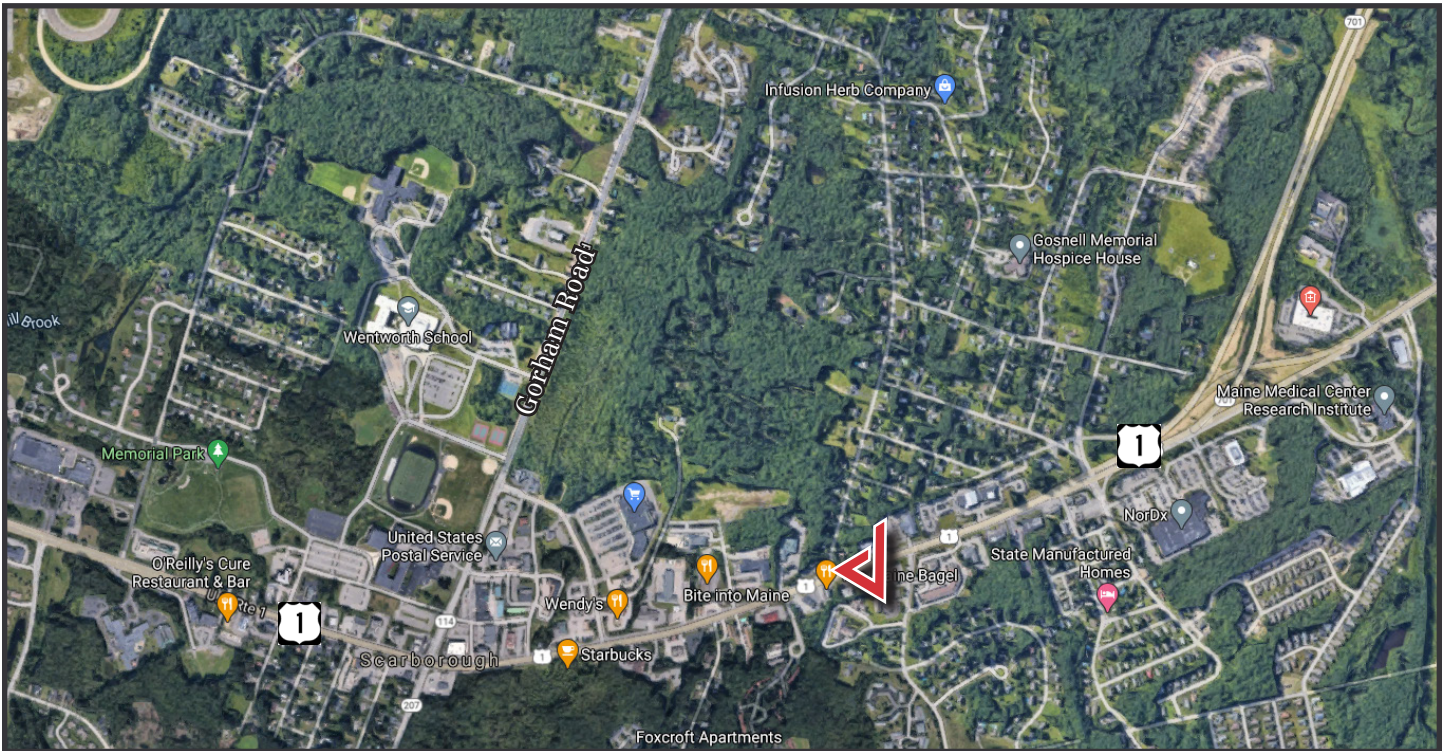
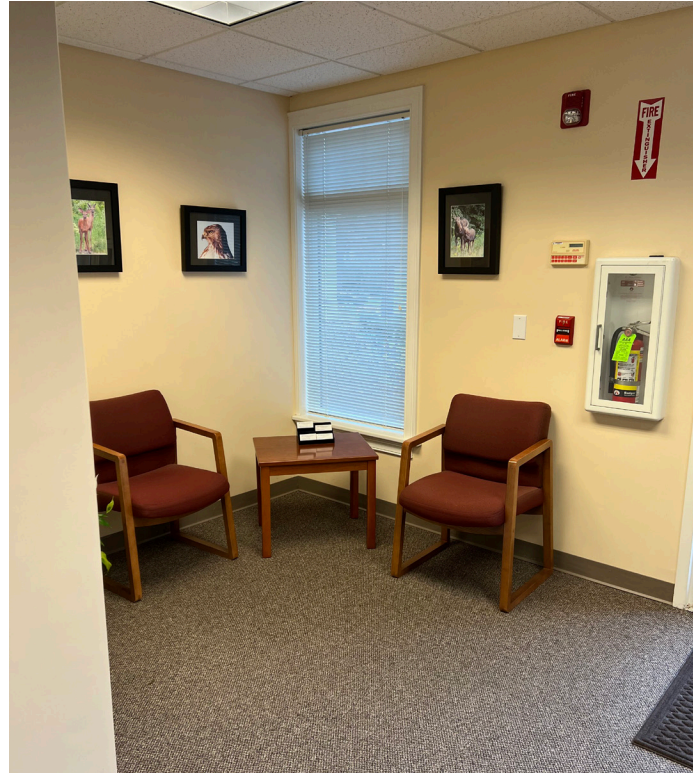


Property Overview

Building Size	8,897± SF
Available Space	1,977± SF
Assessor's Reference	Map U045, Lot 13A
Zoning	TVC
Building Construction	Wood framed
HVAC	Gas-fired, forced hot air
Utilites	Municipal water and sewer
Sprinkler	Yes, full coverage wet system
Parking	Ample, on-site
Availability	Immediately
Miscellaneous	<ul style="list-style-type: none">- Ample dry basement storage at no additional cost- Signage above suites entrance

FOR LEASE : \$14.00/SF NNN - NNN Expenses: \$7.00/SF





The information contained herein has been given to us by the owner of the property or other sources we deem reliable. We have no reason to doubt its accuracy, but we do not guarantee it. All information should be verified prior to purchase or lease.