

FOR SALE

Mixed-Use Building

13,887± SF | 2.28± acres | \$975,000



680 Maine Avenue, Farmingdale

Property Highlights

- *First floor retail space*
- *Excellent location at a lighted intersection*
- *Ample parking for customers on site*



Property Description

We are pleased to offer a 13,887± SF mixed-use building for sale at 680 Maine Avenue in Farmingdale. The property has 8,887± SF of first floor retail space and an adjoining building with two apartments and room for another.



Broker Contact

Chris Craig

chris@dunhamgroup.com

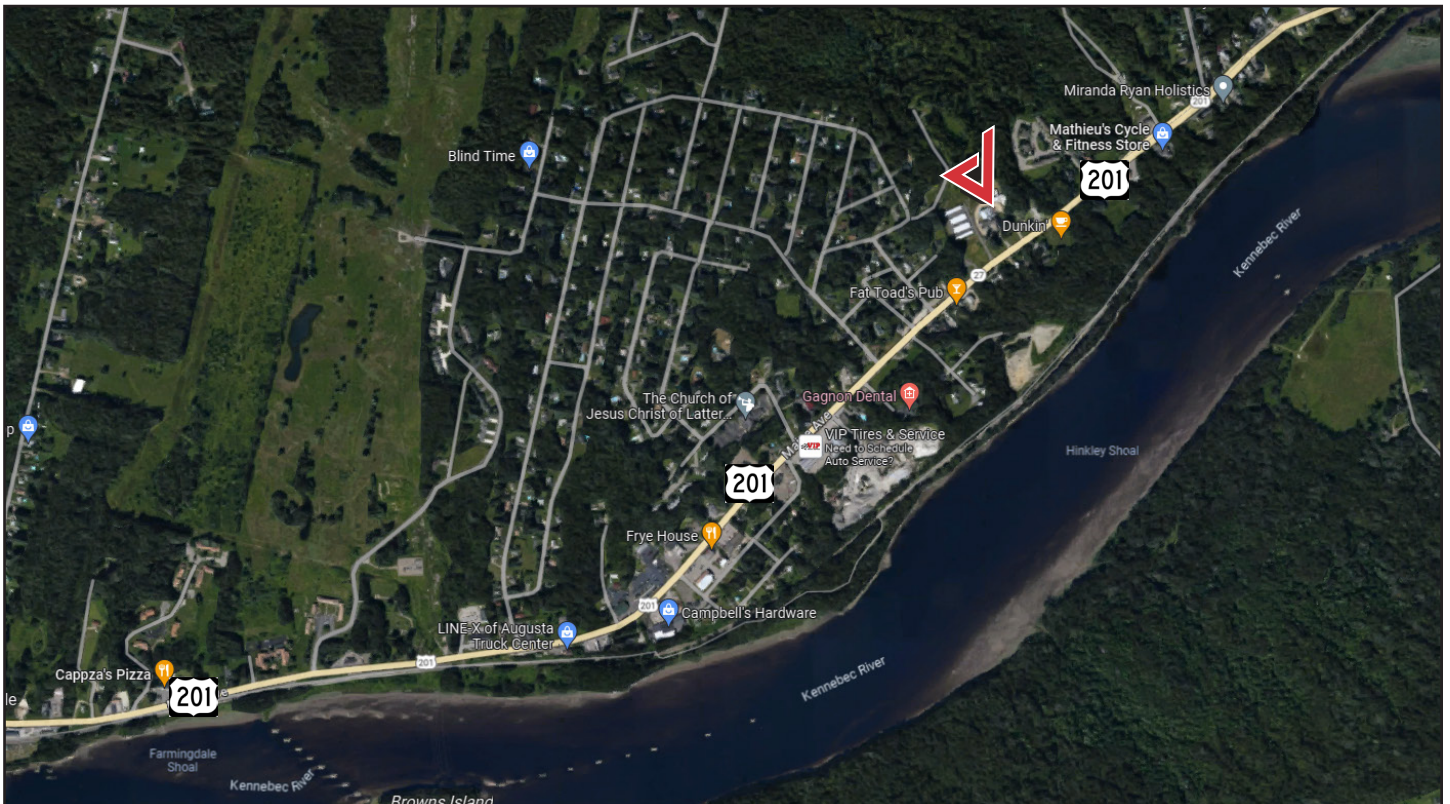
207.773.7100

Property Overview

Owner	Major Shep, LLC
Building Size	13,887± SF
Lot Size	2.28± acres
Available Space	8,887± SF - First Floor Retail
Assessor's Reference	Map 32, Lot 038
Deed Reference	Book 13253, Page 263
Annual Taxes	\$12,287.70 (FY '22- '23)
Building Construction	Wood frame
Roof	Metal & Asphalt shingle
Siding	Clapboard
Flooring	Carpet & Linoleum
Utilities	Town water, sewer and natural gas
Loading Docks	Two (2)
HVAC	Mix of heat pumps, Rinnai heaters, gas furnace, and pellet furnace
Electrical	220 amp service
Lighting	LED fixtures
Sprinkler System	No
Bathrooms	One (1) in retail space; One (1) per apartment
Parking	Abundant on-site

FOR SALE : \$975,000

680 Maine Avenue



The information contained herein has been given to us by the owner of the property or other sources we deem reliable. We have no reason to doubt its accuracy, but we do not guarantee it. All information should be verified prior to purchase or lease.