

FOR LEASE

Retail Space

8,887± SF | \$8.50/SF NNN



680 Maine Avenue, Farmingdale

Property Highlights

- *High visibility on Route 201*
- *Abundant on-site parking*
- *Flexible zoning*



Property Description

We are pleased to offer 8,887± SF of retail space for lease at 680 Maine Avenue in Farmingdale. Included in this space is a 930± SF mezzanine (not included in the total SF), loading dock and electronic signage.



Broker Contact

Chris Craig

chris@dunhamgroup.com

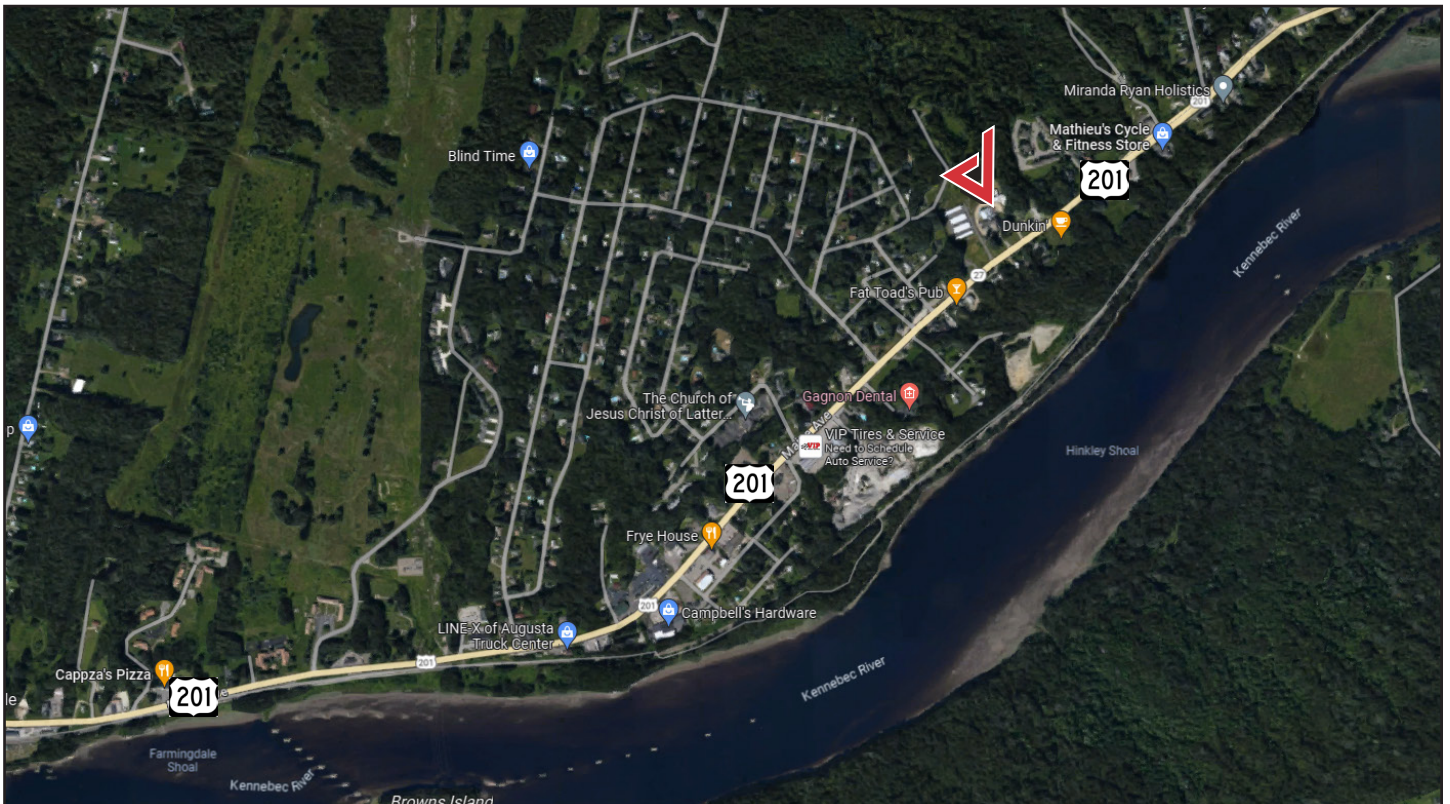
207.773.7100

Property Overview

Owner	Major Shep, LLC
Building Size	10,000± SF
Lot Size	2.28± acres
Available Space	8,887± SF
Assessor's Reference	Map 32, Lot 038
Deed Reference	Book 13253, Page 263
Annual Taxes	\$12,287.70 (FY '22- '23)
Building Construction	Wood frame
Roof	Metal & Asphalt shingle
Siding	Clapboard
Flooring	Carpet & Linoleum
Utilities	Town water, sewer and natural gas
Loading Docks	Two (2)
HVAC	Mix of heat pumps, Rinnai heaters, and pellet furnace
Electrical	220 amp service
Lighting	LED fixtures
Sprinkler System	No
Bathrooms	One (1)
Parking	Abundant on-site

FOR LEASE : \$8.50/SF NNN
ESTIMATED NNN's : \$1.50/SF

680 Maine Avenue



The information contained herein has been given to us by the owner of the property or other sources we deem reliable. We have no reason to doubt its accuracy, but we do not guarantee it. All information should be verified prior to purchase or lease.