

# FOR SALE

## Industrial Building

10,000± SF | 2.31± acres



## 68 US Route One, Cumberland

### Property Highlights

- 3,200± SF freezer
- Floor Drain
- 400 amp, 480/277 volt, 3-phase service
- Great visibility to US Route One



### Property Description

We are pleased to offer this 10,000± SF light manufacturing building together with 2.31± acres of land. The building could be redeveloped into office or food production space if necessary. The seller needs to lease back the property for 18± months. The property is conveniently located approximately 5 mins from I-295 and the Falmouth Turnpike Spur.



### Broker Contact

Greg Hastings, SIOR

ghastings@dunhamgroup.com

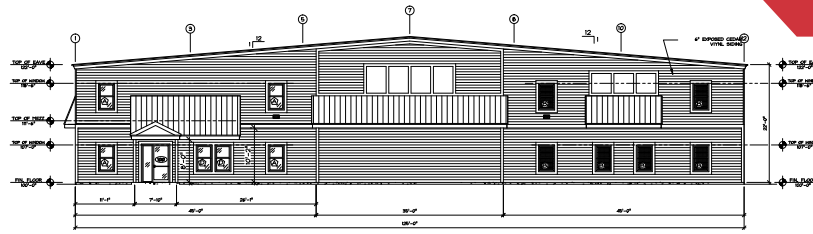
207.773.7100

## Property Overview

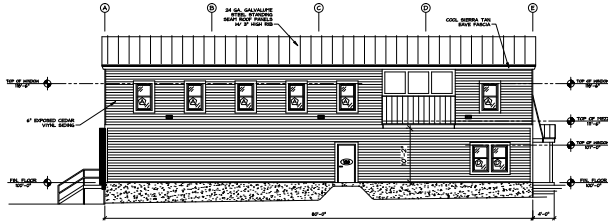
Owner	68 Route 1, LLC
Building Size	10,000± SF
Lot Size	2.31± acres
Available Space	5,960± SF - Warehouse 840± SF - Office 3,200± SF - Freezer
Zoning	Office Commercial (South)
Assessor's Reference	Map R01, Lot 11-B
Deed Reference	Book 31615, Page 105
Annual Taxes	\$25,742.99 ('21 - '22)
Year Built	2015
Building Construction	Varco Pruden pre-engineered steel frame
Roof	Standing seam metal roof
Siding	Metal and cedar vinyl siding
Flooring	Concrete slab
Utilities	Municipal water and sewer, LP gas (natural gas is located in Route One)
Eave Height	22'±
Loading Docks	Four (4) 8' x 9'6" dock doors
HVAC	Office: HVAC   Warehouse: Gas-fired FHA Reznor heaters
Electrical	400 amp, 480/277 volt, 3-phase
Lighting	Fluorescent fixtures
Sprinkler System	Full coverage with combination of wet and dry systems
Bathrooms	Two (2)
Accessibility	Within 3± miles of I-295 and the Maine Turnpike/I-95 Exit 52
Miscellaneous	- Floor drain in warehouse - Mezzanine storage space in warehouse

**FOR SALE : \$1,650,000**

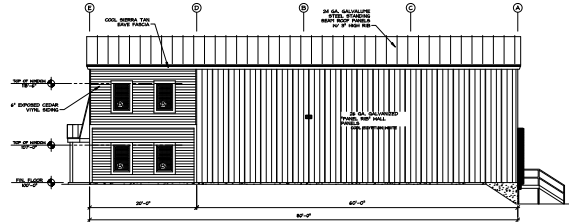




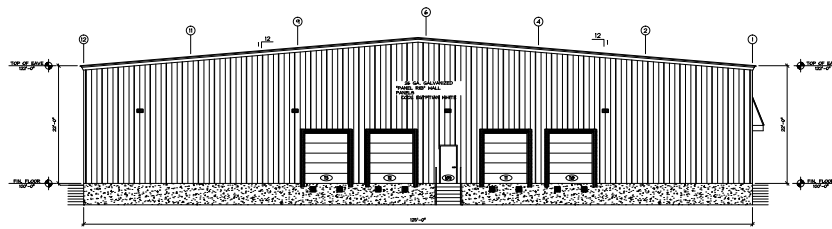
FRONT ELEVATION  
SCALE: 1/8" = 1'-0"



LEFT SIDE ELEVATION  
SCALE: 1/8" = 1'-0"



RIGHT SIDE ELEVATION  
SCALE: 1/8" = 1'-0"



BACK ELEVATION  
SCALE: 1/8" = 1'-0"

**PATCO**  
CONSTRUCTION INC.

200 MAIN STREET  
BATH, ME 04501  
TEL: 603.785.1234  
WWW.PATCOCONSTRUCTION.COM

PROJECT: 68 US ROUTE 1  
CUMBERLAND, ME  
DATE: 7/23/14  
DRAWN BY: H.T. PELLETIER  
CHECKED BY: AS SHOWN

1. CALCULATED PERCENTAGE OF VERTICAL CURVE  
2. CALCULATED PERCENTAGE OF VERTICAL CURVE  
3. CALCULATED PERCENTAGE OF VERTICAL CURVE

4. CALCULATED PERCENTAGE OF VERTICAL CURVE  
5. CALCULATED PERCENTAGE OF VERTICAL CURVE  
6. CALCULATED PERCENTAGE OF VERTICAL CURVE

7. CALCULATED PERCENTAGE OF VERTICAL CURVE  
8. CALCULATED PERCENTAGE OF VERTICAL CURVE  
9. CALCULATED PERCENTAGE OF VERTICAL CURVE

10. CALCULATED PERCENTAGE OF VERTICAL CURVE  
11. CALCULATED PERCENTAGE OF VERTICAL CURVE  
12. CALCULATED PERCENTAGE OF VERTICAL CURVE

13. CALCULATED PERCENTAGE OF VERTICAL CURVE  
14. CALCULATED PERCENTAGE OF VERTICAL CURVE  
15. CALCULATED PERCENTAGE OF VERTICAL CURVE

16. CALCULATED PERCENTAGE OF VERTICAL CURVE  
17. CALCULATED PERCENTAGE OF VERTICAL CURVE  
18. CALCULATED PERCENTAGE OF VERTICAL CURVE

19. CALCULATED PERCENTAGE OF VERTICAL CURVE  
20. CALCULATED PERCENTAGE OF VERTICAL CURVE  
21. CALCULATED PERCENTAGE OF VERTICAL CURVE

22. CALCULATED PERCENTAGE OF VERTICAL CURVE  
23. CALCULATED PERCENTAGE OF VERTICAL CURVE  
24. CALCULATED PERCENTAGE OF VERTICAL CURVE

25. CALCULATED PERCENTAGE OF VERTICAL CURVE  
26. CALCULATED PERCENTAGE OF VERTICAL CURVE  
27. CALCULATED PERCENTAGE OF VERTICAL CURVE

28. CALCULATED PERCENTAGE OF VERTICAL CURVE  
29. CALCULATED PERCENTAGE OF VERTICAL CURVE  
30. CALCULATED PERCENTAGE OF VERTICAL CURVE

31. CALCULATED PERCENTAGE OF VERTICAL CURVE  
32. CALCULATED PERCENTAGE OF VERTICAL CURVE  
33. CALCULATED PERCENTAGE OF VERTICAL CURVE

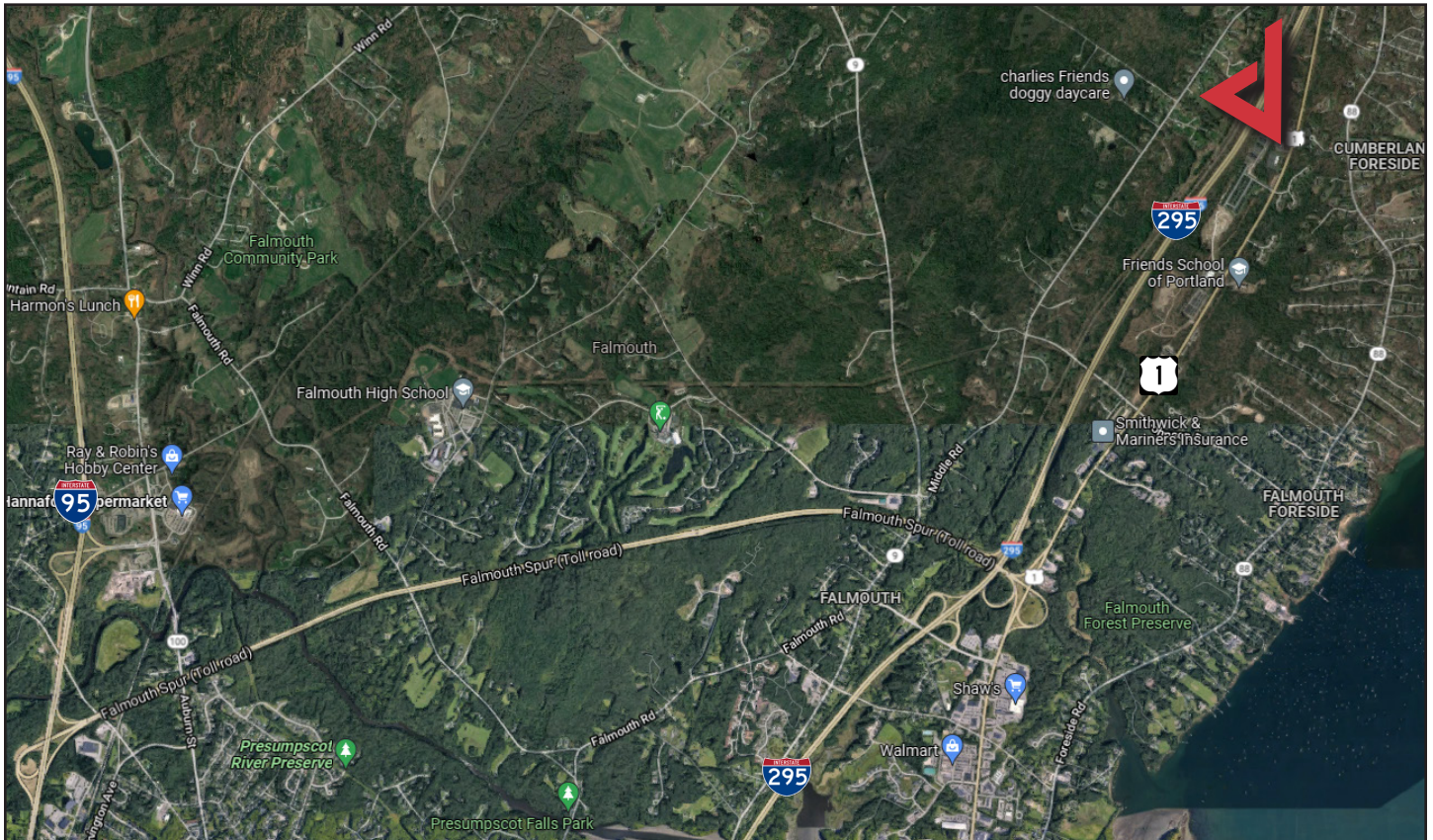
34. CALCULATED PERCENTAGE OF VERTICAL CURVE  
35. CALCULATED PERCENTAGE OF VERTICAL CURVE  
36. CALCULATED PERCENTAGE OF VERTICAL CURVE

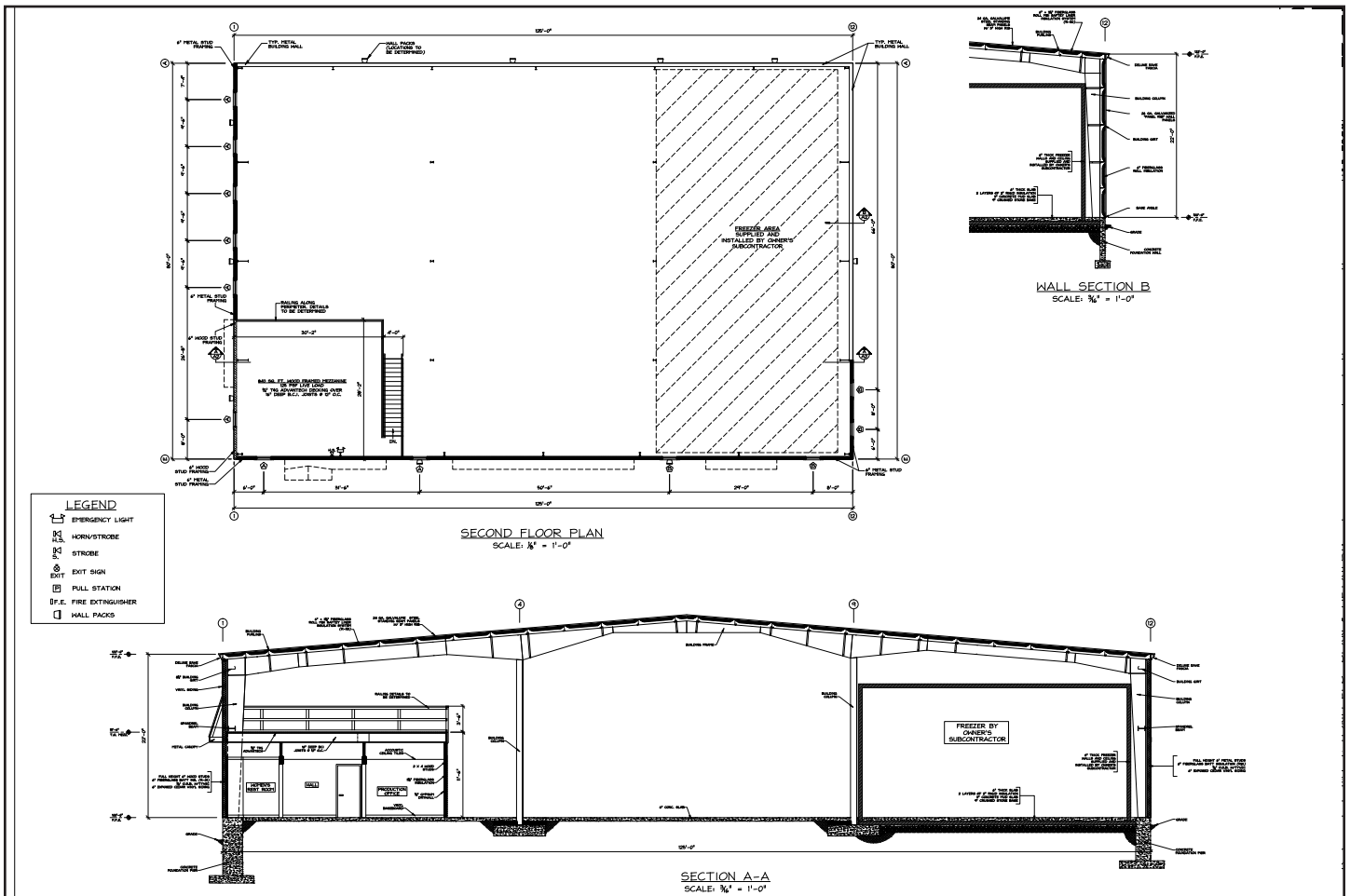
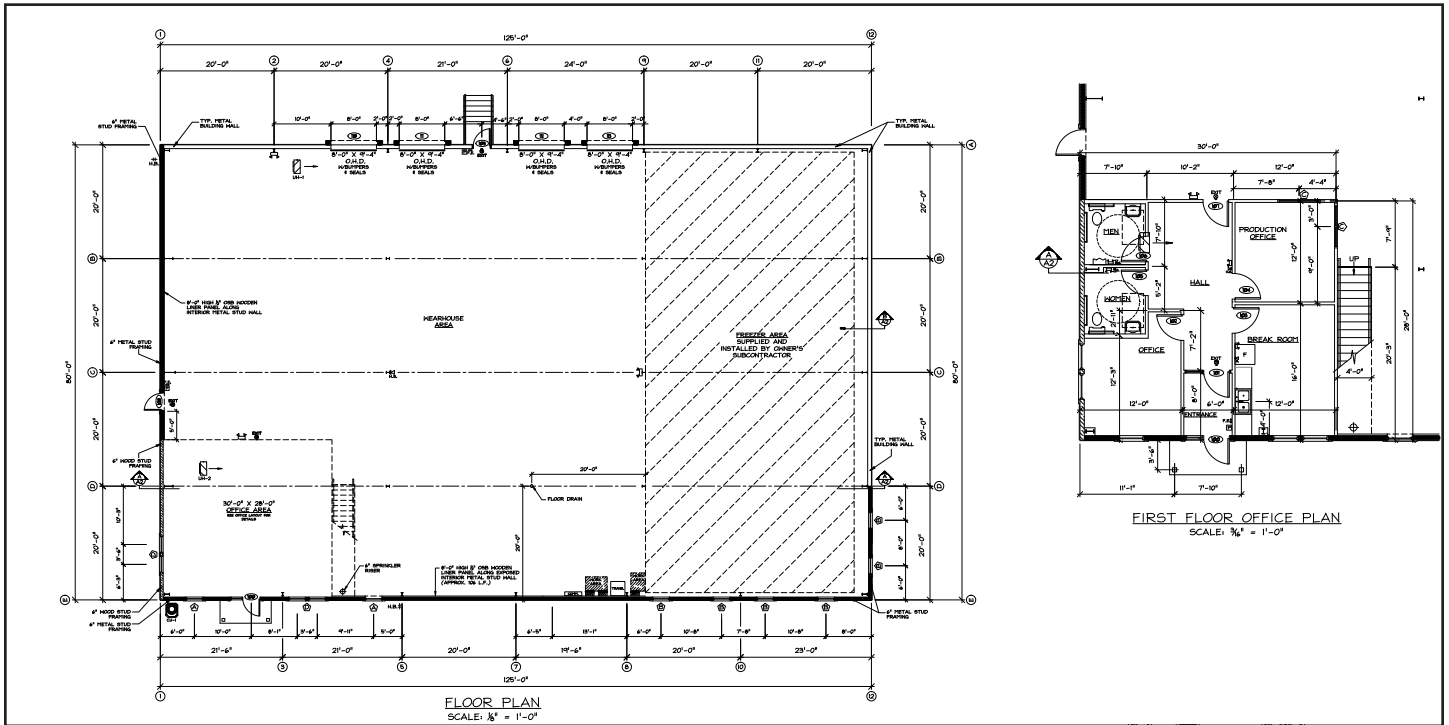
37. CALCULATED PERCENTAGE OF VERTICAL CURVE  
38. CALCULATED PERCENTAGE OF VERTICAL CURVE  
39. CALCULATED PERCENTAGE OF VERTICAL CURVE

40. CALCULATED PERCENTAGE OF VERTICAL CURVE  
41. CALCULATED PERCENTAGE OF VERTICAL CURVE  
42. CALCULATED PERCENTAGE OF VERTICAL CURVE

43. CALCULATED PERCENTAGE OF VERTICAL CURVE  
44. CALCULATED PERCENTAGE OF VERTICAL CURVE  
45. CALCULATED PERCENTAGE OF VERTICAL CURVE

46. CALCULATED PERCENTAGE OF VERTICAL CURVE  
47. CALCULATED PERCENTAGE OF VERTICAL CURVE  
48. CALCULATED PERCENTAGE OF VERTICAL CURVE





The information contained herein has been given to us by the owner of the property or other sources we deem reliable. We have no reason to doubt its accuracy, but we do not guarantee it. All information should be verified prior to purchase or lease.



Dept. of Professional & Financial Regulation  
Office of Professional & Occupational Regulation  
**MAINE REAL ESTATE COMMISSION**

35 State House Station Augusta ME 04333-0035



## REAL ESTATE BROKERAGE RELATIONSHIPS FORM

### *Right Now You Are A Customer*

Are you interested in buying or selling residential real estate in Maine? Before you begin working with a real estate licensee it is important for you to understand that Maine Law provides for different levels of brokerage service to buyers and sellers. You should decide whether you want to be represented in a transaction (as a client) or not (as a customer). To assist you in deciding which option is in your best interest, please review the following information about real estate brokerage relationships:

Maine law requires all real estate brokerage companies and their affiliated licensees ("licensee") to perform certain basic duties when dealing with a buyer or seller. You can expect a real estate licensee you deal with to provide the following **customer-level services**:

- ✓ To disclose all material defects pertaining to the physical condition of the real estate that are known by the licensee;
- ✓ To treat both the buyer and seller honestly and not knowingly give false information;
- ✓ To account for all money and property received from or on behalf of the buyer or seller; and
- ✓ To comply with all state and federal laws related to real estate brokerage activity.

Until you enter into a written brokerage agreement with the licensee for client-level representation you are considered a "customer" and the licensee is not your agent. **As a customer, you should not expect the licensee to promote your best interest, or to keep any information you give to the licensee confidential, including your bargaining position.**

### *You May Become A Client*

If you want a licensee to represent you, you will need to enter into a written listing agreement or a written buyer representation agreement. These agreements **create a client-agent relationship** between you and the licensee. As a client you can expect the licensee to provide the following services, **in addition to** the basic services required of all licensees listed above:

- ✓ To perform the terms of the written agreement with skill and care;
- ✓ To promote your best interests;
  - For seller clients this means the agent will put the seller's interests first and negotiate the best price and terms for the seller;
  - For buyer clients this means the agent will put the buyer's interests first and negotiate for the best prices and terms for the buyer; and
- ✓ To maintain the confidentiality of specific client information, including bargaining information.

### **COMPANY POLICY ON CLIENT-LEVEL SERVICES — WHAT YOU NEED TO KNOW**

The real estate brokerage company's policy on client-level services determines which of the three types of agent-client relationships permitted in Maine may be offered to you. The agent-client relationships permitted in Maine are as follows:

- ✓ The company and all of its affiliated licensees represent you as a client (called "**single agency**");
- ✓ The company appoints, with your written consent, one or more of the affiliated licensees to represent you as an agent(s) (called "**appointed agency**");
- ✓ The company may offer limited agent level services as a **disclosed dual agent**.

### **WHAT IS A DISCLOSED DUAL AGENT?**

In certain situations a licensee may act as an agent for and represent both the buyer and the seller in the same transaction. This is called **disclosed dual agency**. *Both the buyer and the seller must consent to this type of representation in writing.*

Working with a dual agent is not the same as having your own exclusive agent as a single or appointed agent. For instance, when representing both a buyer and a seller, the dual agent must not disclose to one party any confidential information obtained from the other party.

***Remember!***  
*Unless you enter into a written agreement  
for agency representation, you are  
a customer—not a client.*

### **THIS IS NOT A CONTRACT**

It is important for you to know that this form is not a contract. The licensee's completion of the statement below acknowledges that you have been given the information required by Maine law regarding brokerage relationships so that you may make an informed decision as to the relationship you wish to establish with the licensee/company.

#### *To Be Completed By Licensee*

This form was presented on (date) \_\_\_\_\_

To \_\_\_\_\_  
Name of Buyer(s) or Seller(s)

by \_\_\_\_\_  
Licensee's Name

on behalf of \_\_\_\_\_  
Company/Agency

MREC Form#3 Revised 07/2006  
Office Title Changed 09/2011

*To check on the license status of the real estate brokerage company or affiliated licensee go to [www.maine.gov/professionallicensing](http://www.maine.gov/professionallicensing).  
Inactive licensees may not practice real estate brokerage.*