

FOR LEASE

Retail Suite

4,200± SF | \$15.00/SF NNN



The Shops at Long Bank

65 Portland Road, Kennebunk - Suite C

Property Highlights

- *Hannaford Anchored Center*
- *Located off of US Route One in the heart of Kennebunk*

Property Description

We are pleased to offer this 4,200± SF retail space for lease. Formally Gorham Bike and Ski, the space is conveniently located off of US Route One in the heart of Kennebunk's retail district. The Shops at Long Bank offers a great opportunity for retailers to establish themselves in one of Maine's busiest destinations. The property is anchored by Hannaford, the region's dominant grocery store. Pylon signage is available.



Broker Contact

Charlie Craig

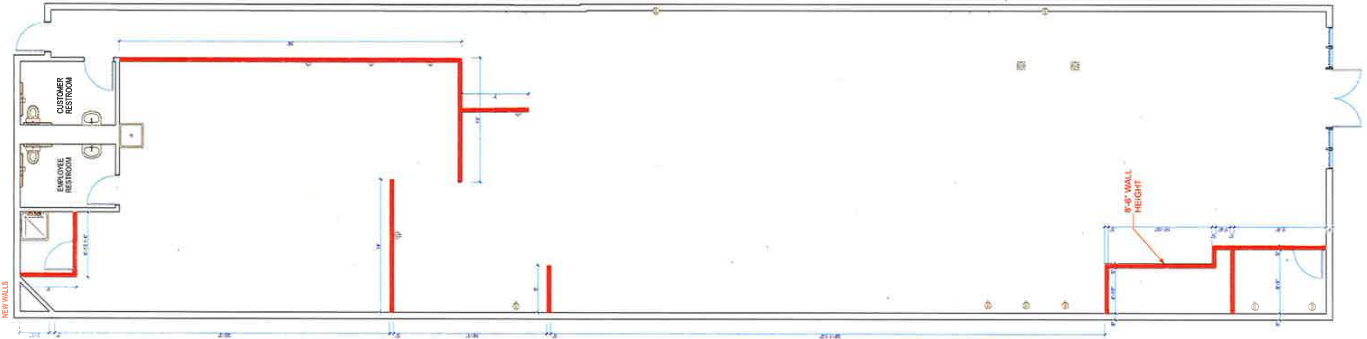
207.773.7100

charles@dunhamgroup.com

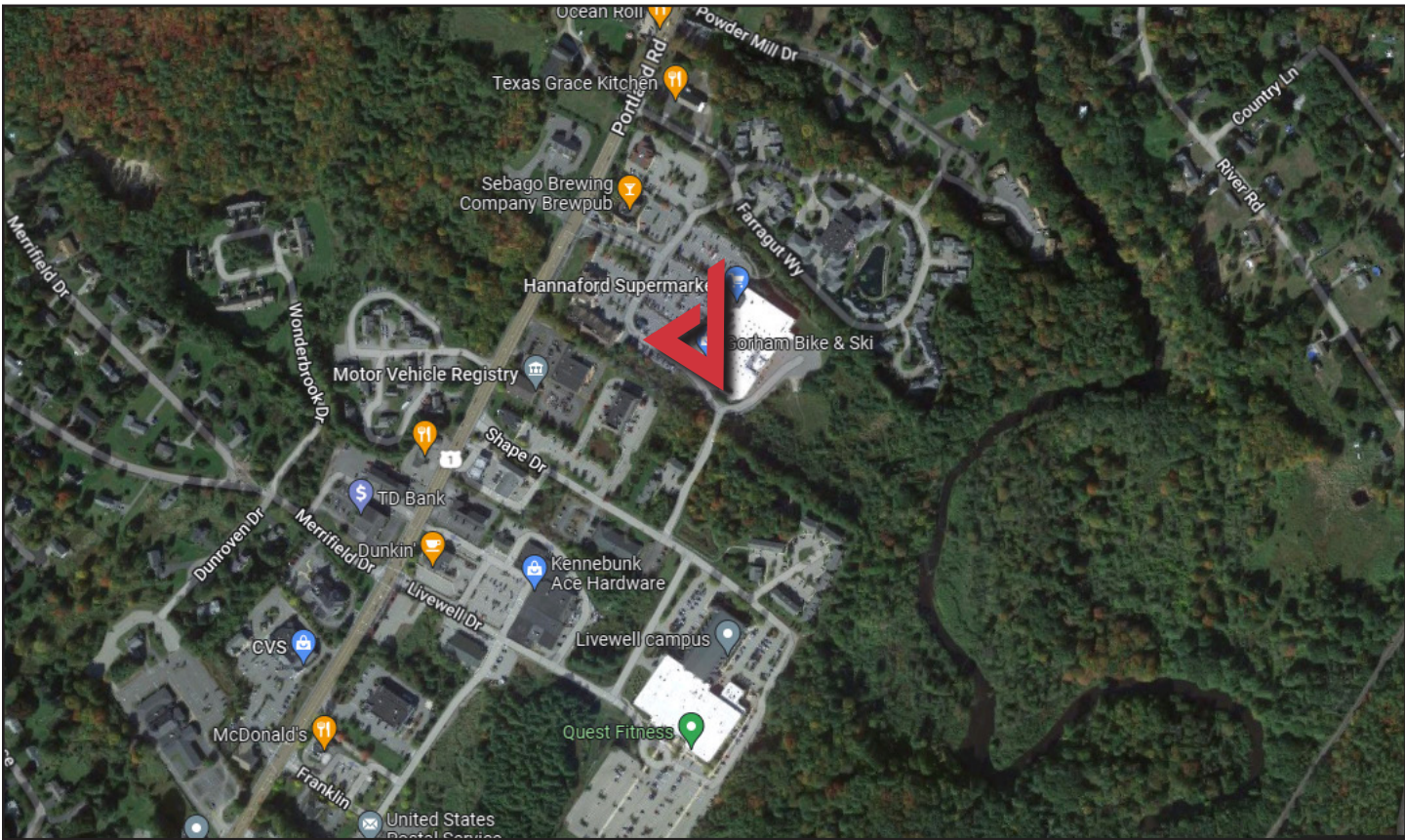
Property Overview

Owner	Hannaford
Available Space	4,200± SF
Availability	May 2022
Assessor's Reference	Map 38, Lot 32
Zoning	SC - Suburban Commercial
Year Built	2007
Utilities	Municipal water and sewer
HVAC	Oil-fired
Parking	Ample on-site
Traffic Counts	14,260 vehicles/day on US Route One
Co-tenants	Biddeford Savings, Sebago Brewing, Hearing Life, The Daily Sweat, Pro Nails and Spa

FOR LEASE : \$15.00/SF NNN - CAM : \$4.85/SF



The Shops at Long Bank



The information contained herein has been given to us by the owner of the property or other sources we deem reliable. We have no reason to doubt its accuracy, but we do not guarantee it. All information should be verified prior to purchase or lease.