

For Lease
Office Spaces
200 - 10,600± SF



The Sanborn Building

550 Forest Avenue
Portland, Maine

Property Highlights

- Suite A: 10,600± SF first floor
Suite B: 2,316± SF second floor
Suite C: 200± SF second floor
- Ample on-site free parking
- Excellent location just off the peninsula

Property Description

We are pleased to offer a multiple office suites for lease at the Sanborn Building located at 550 Forest Avenue in Portland. This property is a professionally managed office building. Other tenants include Maine Red Claws, Maine Camps, Advantage Home Care, and Vogel & Dubois.



Broker Contact

Katie Millett, Esq.

Justin Lamontagne, CCIM, SIOR

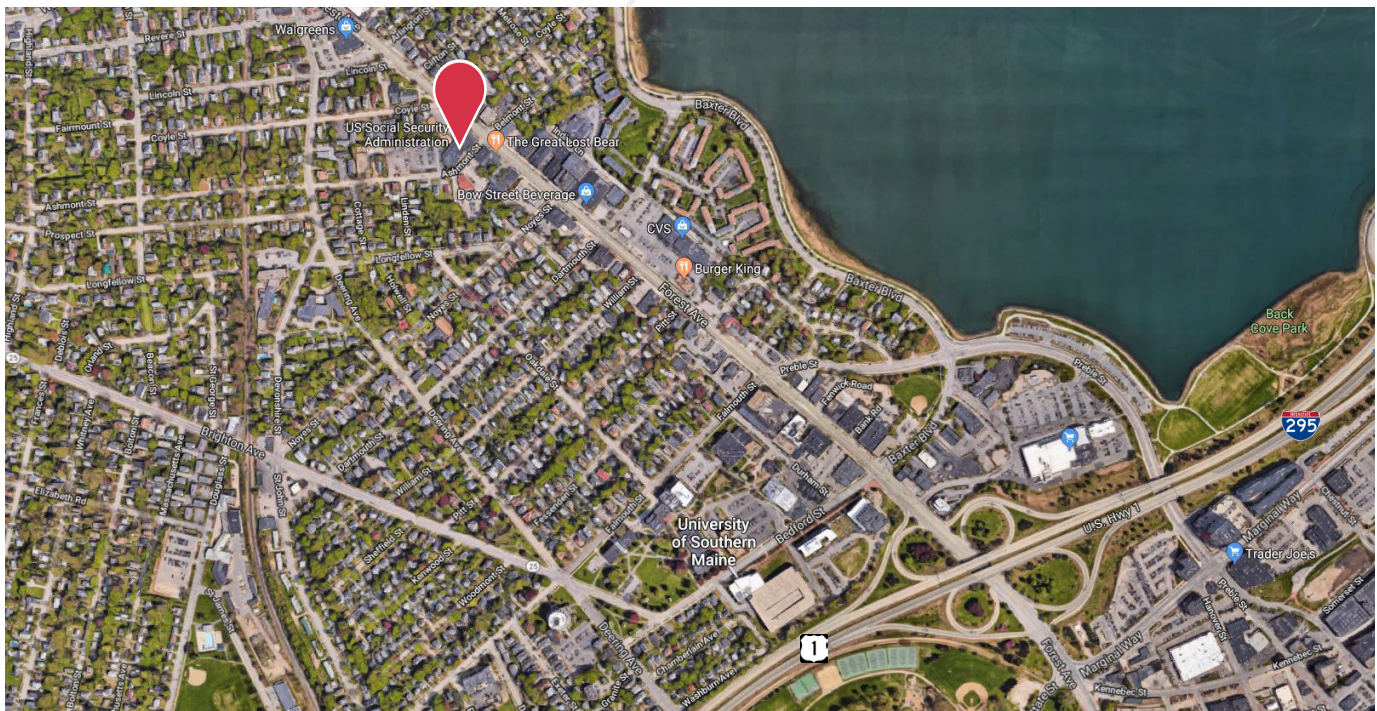
kmillett@dunhamgroup.com

justin@dunhamgroup.com

Property Overview

Building Size	25,941± SF
Zoning	Business Community (B2b)
Available Space	Suite A - 10,600± SF Suite B - 2,316± SF Suite C - 200± SF
Building Age	1956 + 1999
Building Construction	Masonry
HVAC	Natural gas fired central HVAC units
Bathrooms	Suite A - Multi-stalled in suite; Suite B - Six (6) in-common
Elevator	Yes
Parking	Ample on-site at no cost to tenant
Miscellaneous	Suite A was recently renovated and offers new LED lighting, HVAC, ceilings, restrooms, and flooring

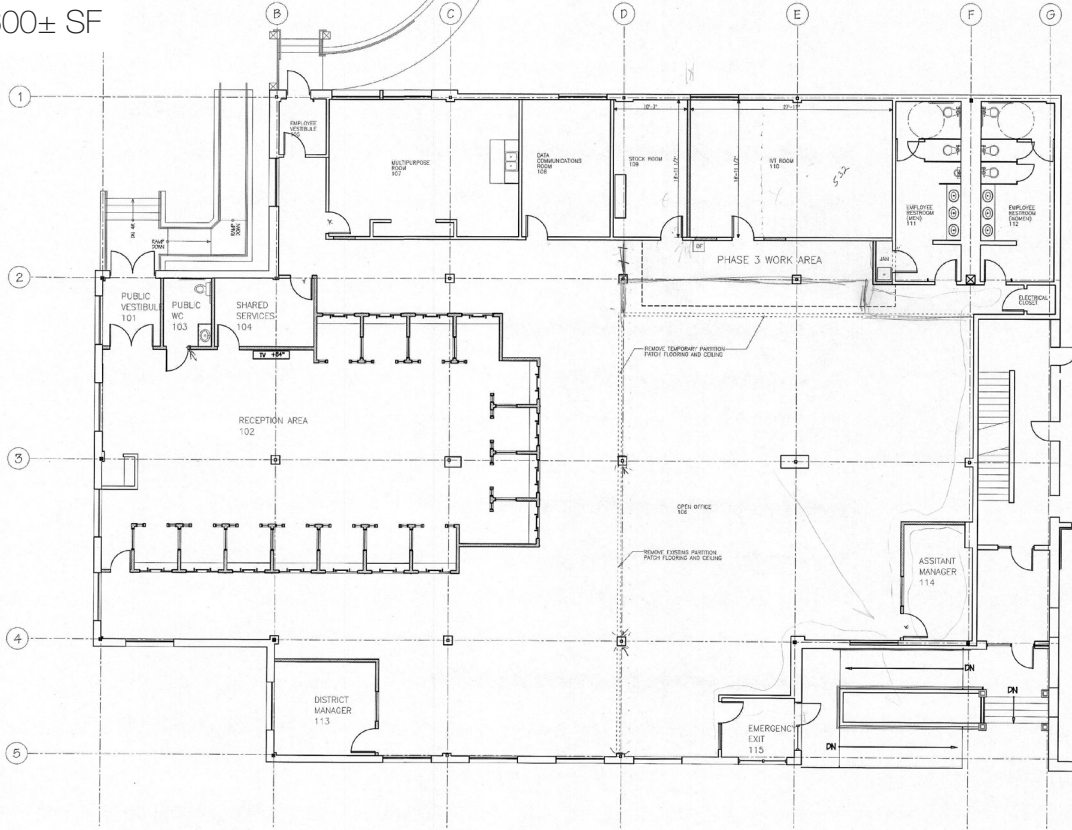
SUITE A : \$13.50/SF NNN
SUITE B : \$16.00/SF Gross
SUITE C : \$400/month Gross



Suite A Photos



Suite A
10,600± SF



Suite B
2,316± SF

