

For Lease
Office/Retail Space
2,300± SF | \$10.00/SF NNN

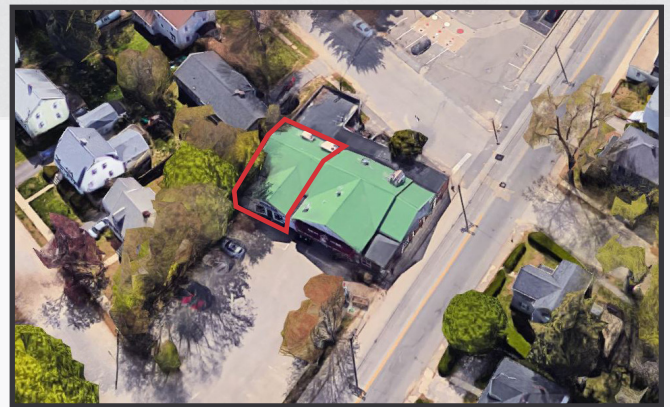


435 Cottage Road

South Portland, ME 04106

Property Highlights

- Flexible layout
- Convenient South Portland Location
- On-site parking



Property Description

We are pleased to offer 2,300± SF of office/retail space for lease at 435 Cottage Road. Located in a highly desirable neighborhood, the property is comprised of five (5) offices, reception area, conference room, 2 bathrooms, and storage space. Conveniently located minutes from Downtown Portland and I-295.

Broker Contact

Chris Craig
207.773.7100
chriscraig@dunhamgroup.com

Property Overview

| | |
|----------------------|--|
| Owner | Sleepy Hollow Development, Inc. |
| Building Size | 7,000± SF |
| Lot Size | 0.43± acres |
| Assessor's Reference | Map 11, Lot 106A |
| Zoning | Limited Business |
| Available Space | 2,300± SF |
| Space Layout | Five (5) offices, reception area, conference room, 2 bathrooms & storage |
| Building Age | 1950 |
| Flooring | Hardwood |
| HVAC | Natural gas with electric A/C |
| Electrical | Separate meters and panels to each space |
| Utilities | Municipal water and sewer |
| Bathrooms | Two (2) |
| Parking | On-site |
| Other Tenant | Thai Taste |

FOR LEASE : \$10.00/SF NNN

