

FOR LEASE

Office Space

3,920± SF | \$16.25/SF MG



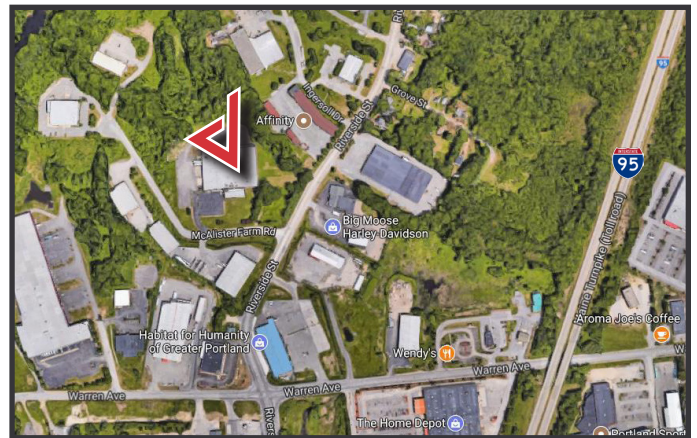
380 Riverside Street, Portland

Property Highlights

- *Natural gas-fired, central HVAC*
- *Recently updated lobby*
- *Ample on-site parking*
- *Amenities include restrooms, kitchenette, and in common shower/locker room*

Property Description

We are pleased to offer a 3,920± SF, move-in ready office suite for lease at 380 Riverside Street in Portland. Located less than one mile from Maine Turnpike Exit 48, the property features a prominent entrance, an abundance of natural light and a versatile layout. Join Wise Business Forms and Lowry & Associates.



Tom Moulton, CCIM, SIOR | tmoulton@dunhamgroup.com

Katie Allen Breggia | katie@dunhamgroup.com

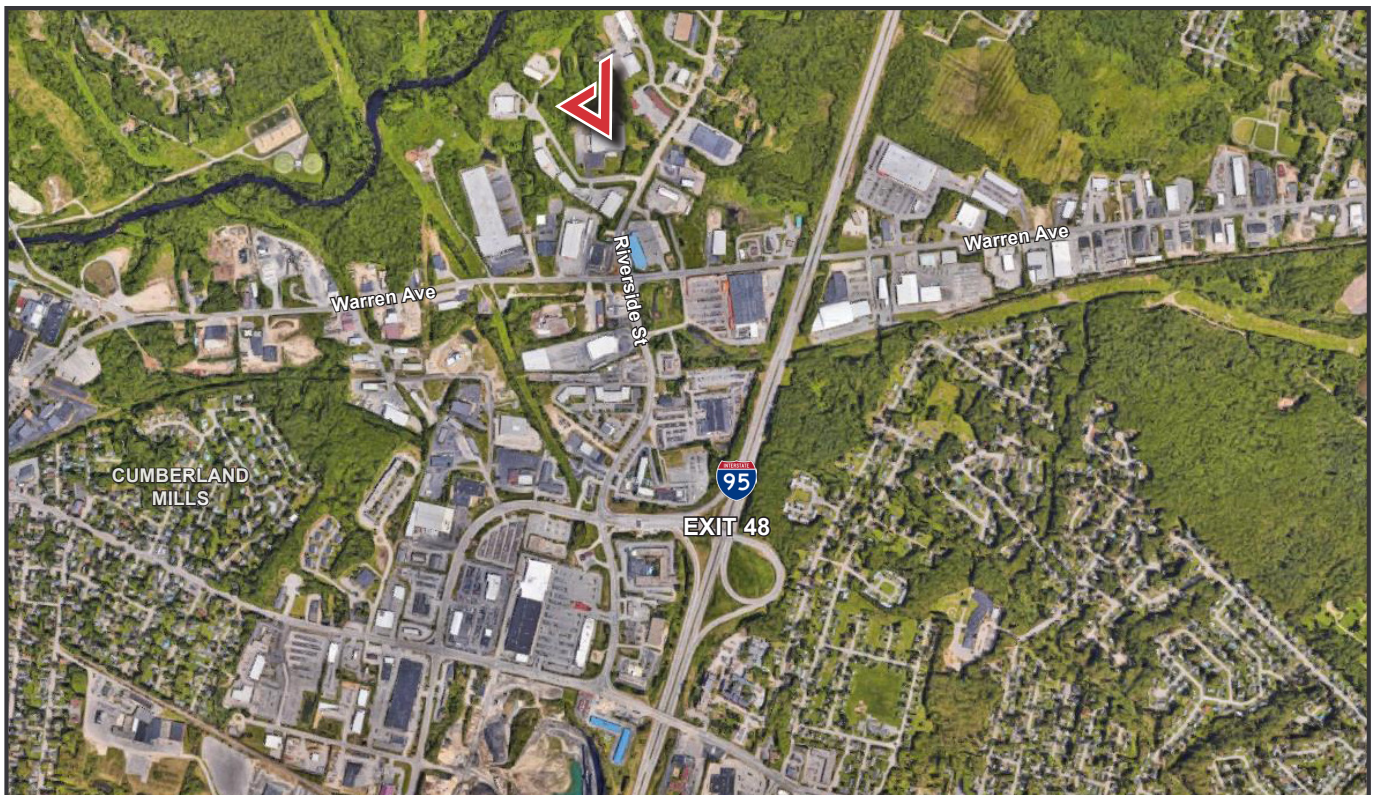
207.773.7100 | www.dunhamgroup.com



Property Overview

Building Size	80,000± SF
Lot Size	9.6± acres
Available Space	3,920± SF - 1 st Floor
HVAC	Natural gas fired, central HVAC
Lighting	Recessed
Flooring	Carpet and hardwood
Featured Amenities	Two restrooms, shared kitchenette/breakroom, in-common shower/locker room
Parking	Abundant on-site paved parking

FOR LEASE : \$16.25/SF MG



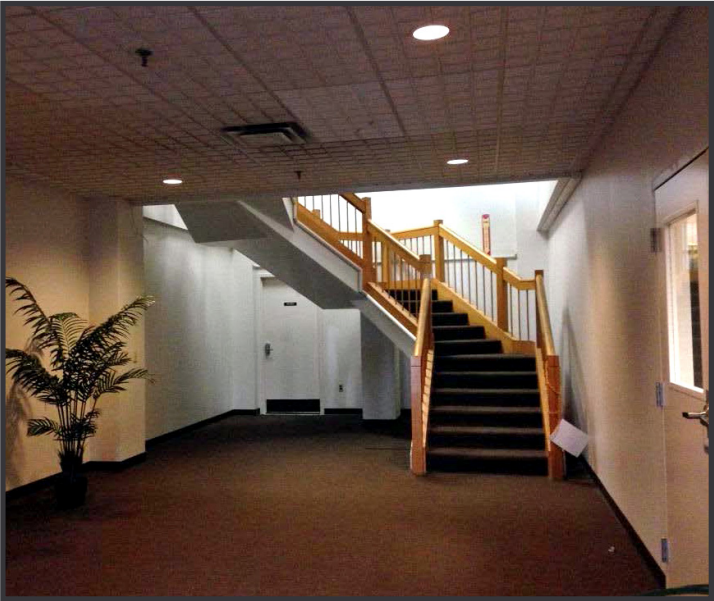
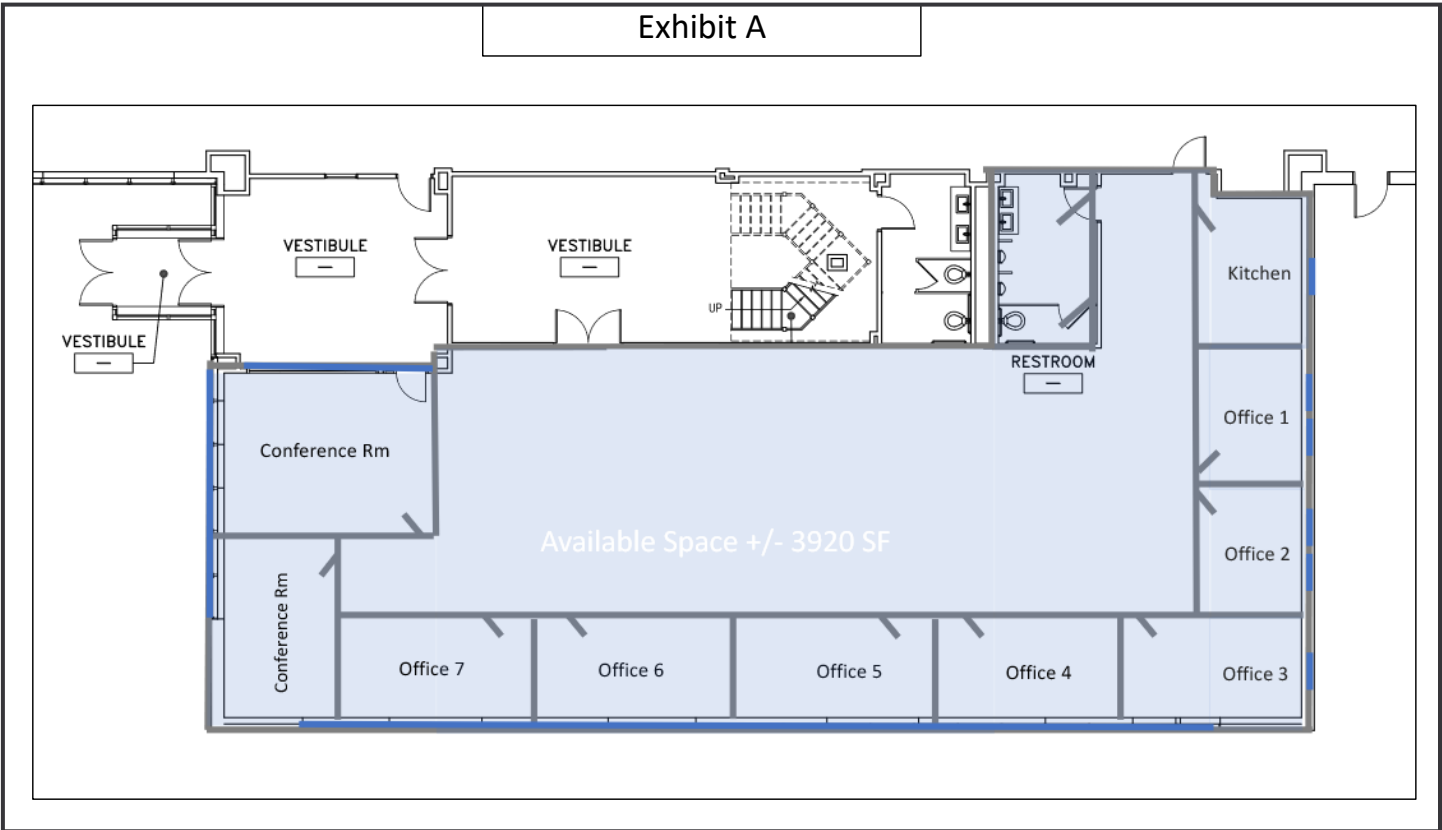


Exhibit A



The information contained herein has been given to us by the owner of the property or other sources we deem reliable. We have no reason to doubt its accuracy, but we do not guarantee it. All information should be verified prior to purchase or lease.