

For Lease
Office Suites
\$16.00/SF MG



380 Riverside Street

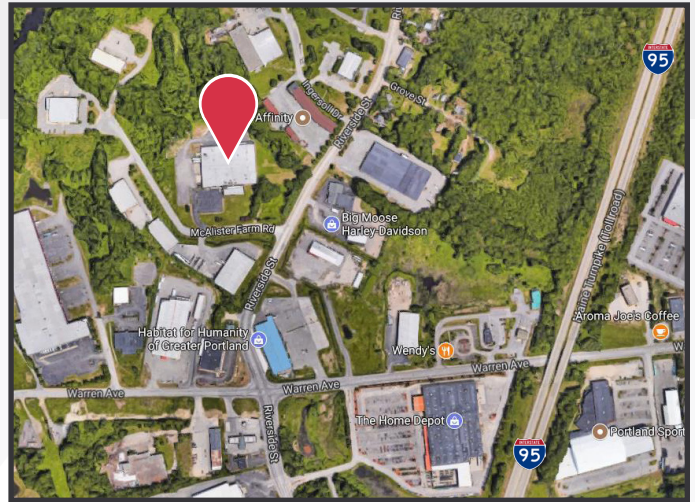
Portland, Maine

Property Information

- Build-to-suit office suites
- Natural gas-fired, central HVAC
- Recently updated lobby
- Amenities include restrooms, kitchenette, and in common shower/locker room

Property Description

We are pleased to offer move-in ready office suites for lease at 380 Riverside Street. Located less than one mile from Maine Turnpike Exit 48, the property features a prominent entrance, an abundance of natural light and a versatile layout. Join Wise Business Forms and Lowry & Associates.



Broker Contact

Tom Moulton, CCIM, SIOR

Sam LeGeyt

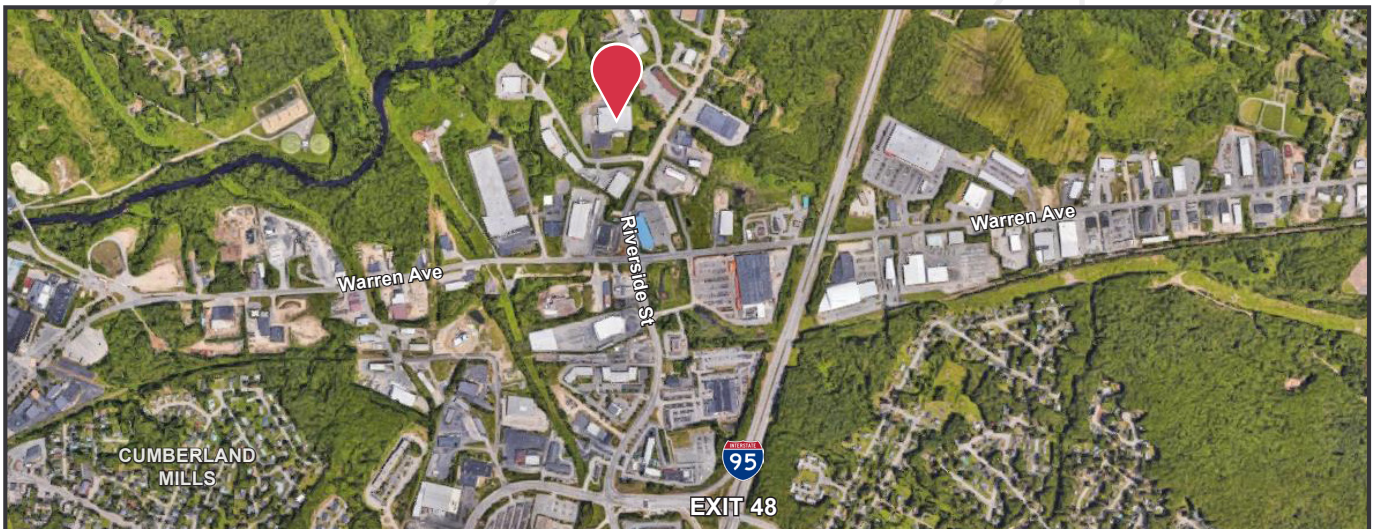
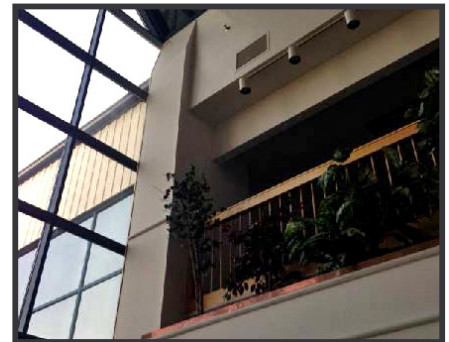
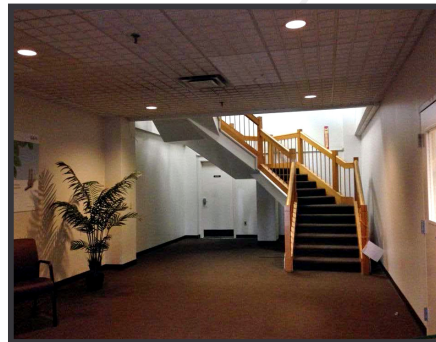
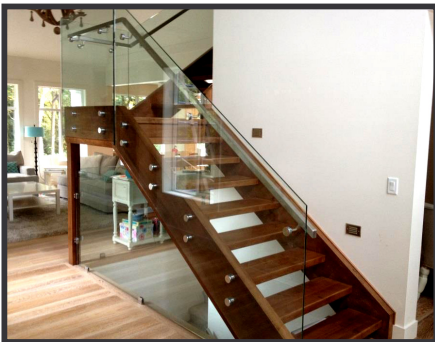
tmoulton@dunhamgroup.com

sam@dunhamgroup.com

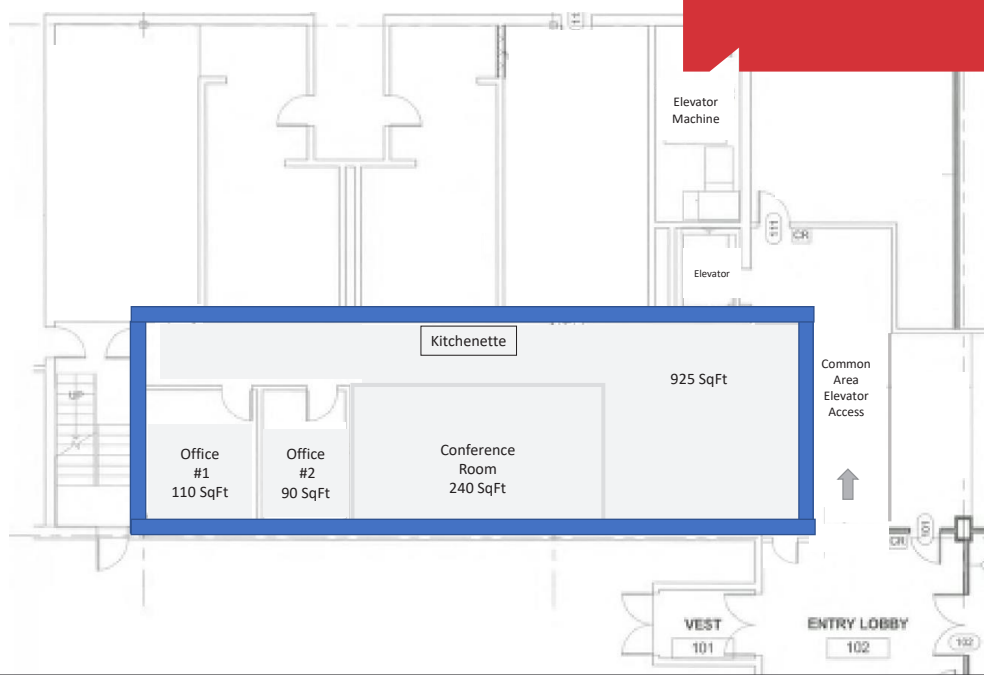
Property Overview

Building Size	80,000± SF
Lot Size	9.6± acres
Available Spaces	1st Floor - 1,365± SF 2nd Floor - 1,200± SF 2nd Floor - 2,628± SF
HVAC	Natural gas fired, central HVAC
Lighting	Recessed
Flooring	Carpet and hardwood
Featured Amenities	Two restrooms, shared kitchenette/breakroom, in-common shower/locker room
Parking	Abundant on-site paved parking

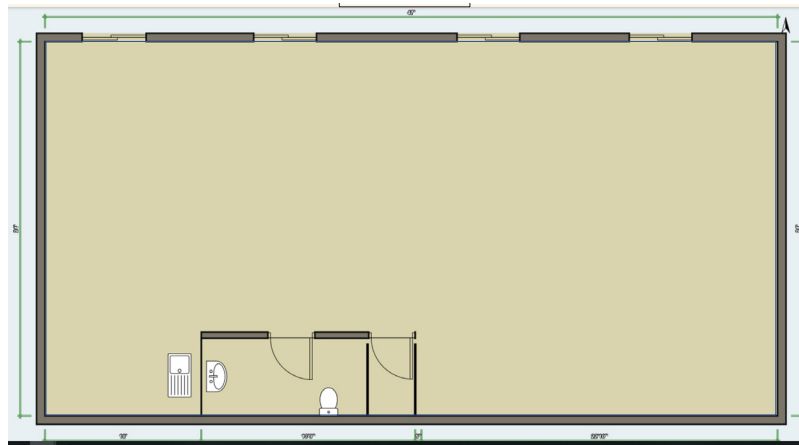
FOR LEASE : \$16.00/SF MG
Estimated CAM's : \$2.10/SF



First Floor
Suite 102
1,365± SF



Second Floor
Suite 202
1,200± SF



Second Floor
Suite 200
2,682± SF

