

For Lease  
Retail Space  
1,751± SF | \$14.00/SF NNN

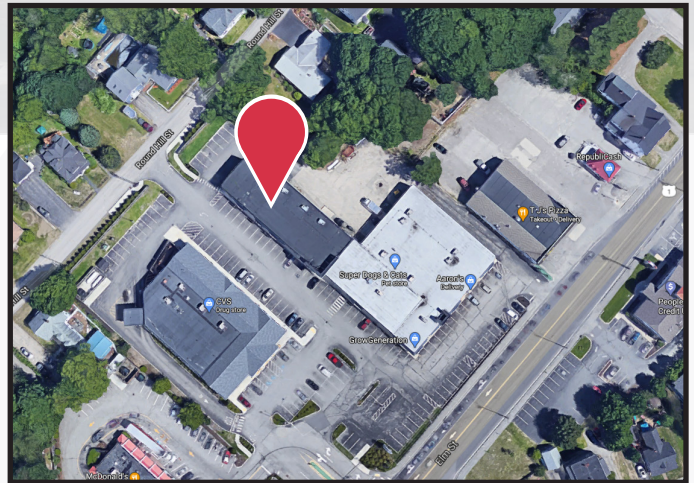


## 380 Elm Street, Unit 7

Biddeford, Maine

### Property Highlights

- Excellent visibility
- Ample on-site parking
- Flexible lease terms available



### Property Description

We are pleased to offer for lease a 1,751± SF retail suite at 380 Elm Street. Located at the Five Points intersection of Route One and Alfred Street, the center has great visibility, access, and signage potential. Join Aaron's, CVS, Super Dog, LivFit Athletics, Seacoast Physical Therapy, and Greenlife Garden Supply.

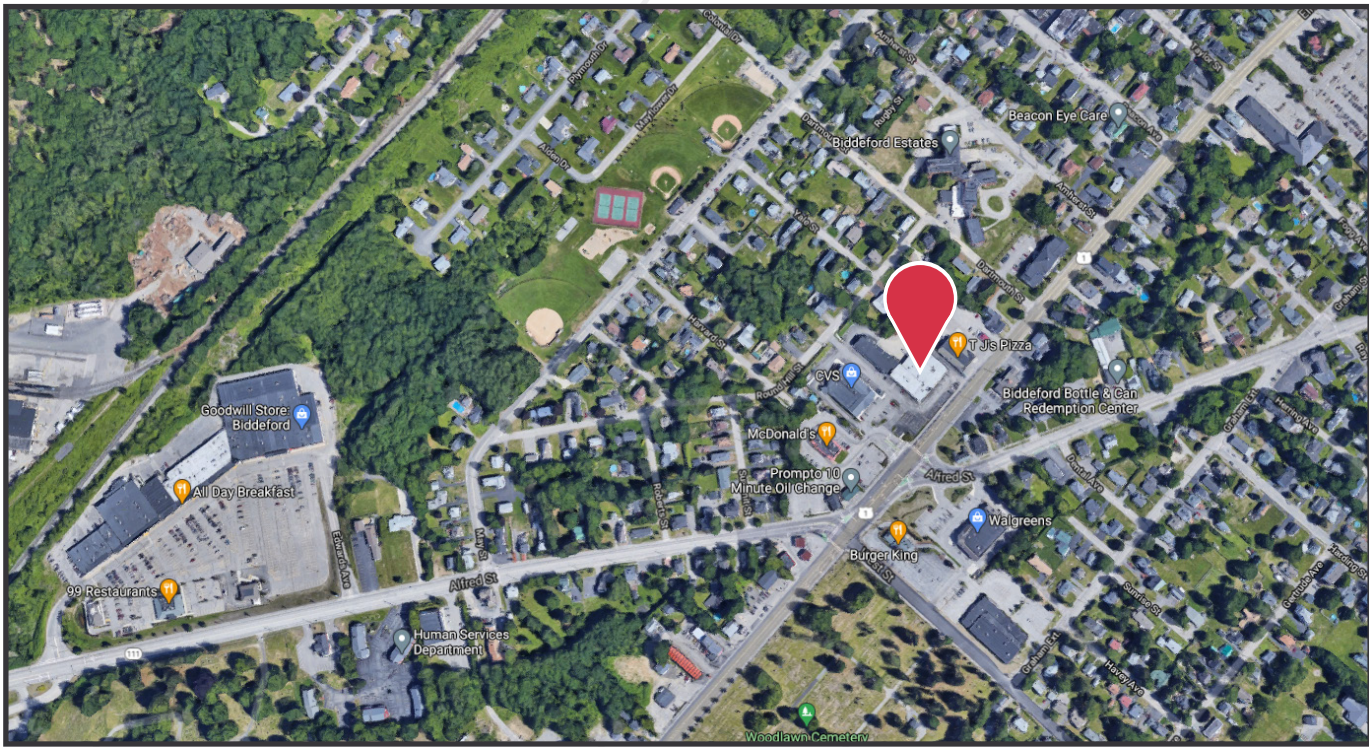
### Broker Contact

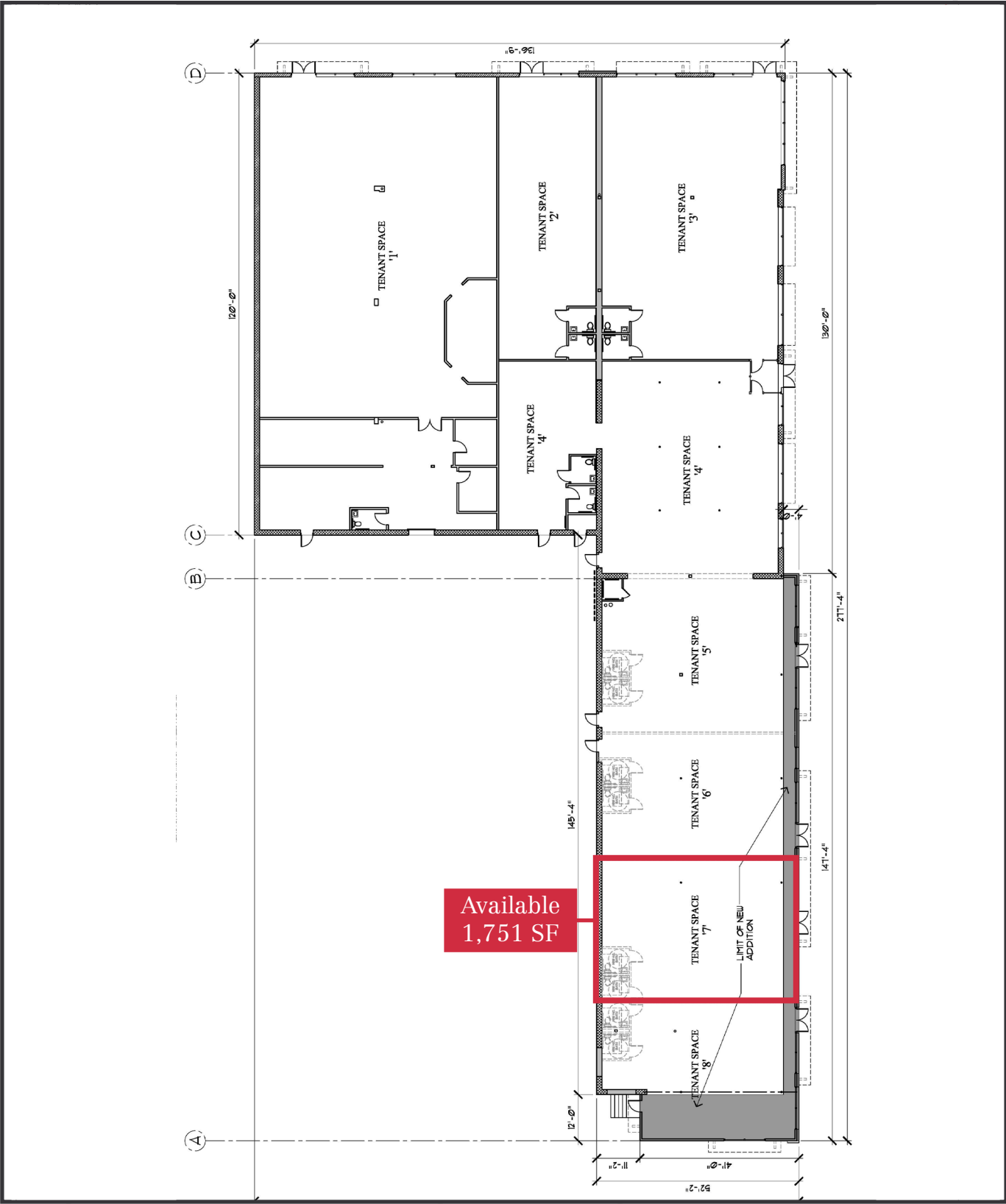
Frank O'Connor, CCIM, SIOR  
207.773.7100  
foconnor@dunhamgroup.com

# Property Overview

Owner	Five Points Realty, LLC
Building Size	23,539± SF
Available Space	1,751± SF, Unit 7
Lot Size	2.66± acres
Assessor's Reference	Map 27, Lot 173
Zoning	B2
Construction	Concrete, cinderblock, and brick
Flooring	Commercial grade tile and carpet
Utilities	Public water, sewer
HVAC	Gas fired forced hot air & central AC
Sprinkler System	Full wet system
Parking	Ample, on-site

FOR LEASE : \$14.00/SF NNN





Available  
1,751 SF