

For Sublease
Retail Building
14,096± SF | \$19.00/SF NNN

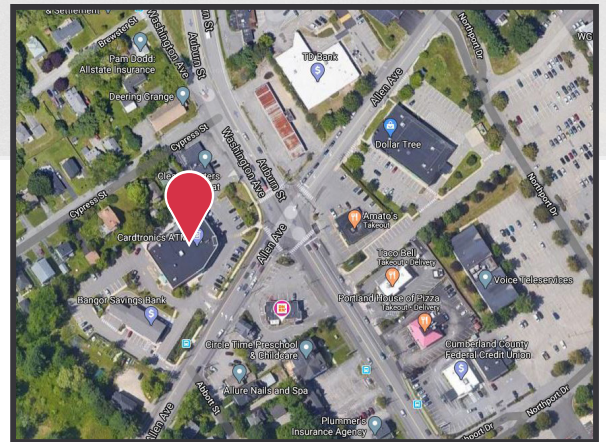


Former Walgreens

340 Allen Avenue
Portland, Maine

Property Highlights

- Attractive building located off Portland's largest arteries, Washington Ave & Allen Ave
- Abundant parking with drive-thru
- Visibility on both Washington Ave & Allen Ave, near Shaw's anchored center



Property Description

We are pleased to offer this 14,096± SF attractive former Walgreens building which includes a drive-thru for sublease. Excellent signage opportunities and exposure and access on Allen Avenue and Washington Avenue.

Broker Contact

Charlie Craig
207.773.7100
charlescraig@dunhamgroup.com
www.dunhamgroup.com



10 Dana Street, Suite 400
Portland, ME 04101
207.773.7100
dunhamgroup.com

Property Overview

Building Size	14,096± SF
Land Area	1.32± acres
Assessor's Reference	344-E-8
Deed Reference	Book 27788, Page 179
Taxes	\$61,965
Zoning	B2 - Business Community
Building Age	2010
Heat/HVAC	Gas fired heat pumps
Utilities	Municipal water and sewer
Parking	Generous parking
Drive-thru	Yes
Access	Accessible from Allen Avenue and Washington Avenue
Available	Immediately

FOR SUBLEASE : \$19.00/SF NNN

