

FOR LEASE

Retail/Office

2,309 SF & 5,798 SF | \$16 - \$18/SF NNN



332 Forest Avenue, Portland

Property Highlights

- *Excellent location and visibility just off the peninsula*
- *On-site free parking*
- *Pylon signage available*
- *Adjacent to USM campus*



Property Description

We are pleased to offer two retail/office suites for lease at 332 Forest Avenue in Portland. University Plaza is highly visible, located at a lighted intersection and has excellent signage potential. The building is adjacent to The University of Southern Maine and Exit 6 of I-295. Other tenants include Kitchen Cove Cabinetry, Eurofins, and Whole Human.

Katie Breggia | katie@dunhamgroup.com
Tom Moulton, CCIM, SIOR | tmoulton@dunhamgroup.com
207.773.7100 | www.dunhamgroup.com

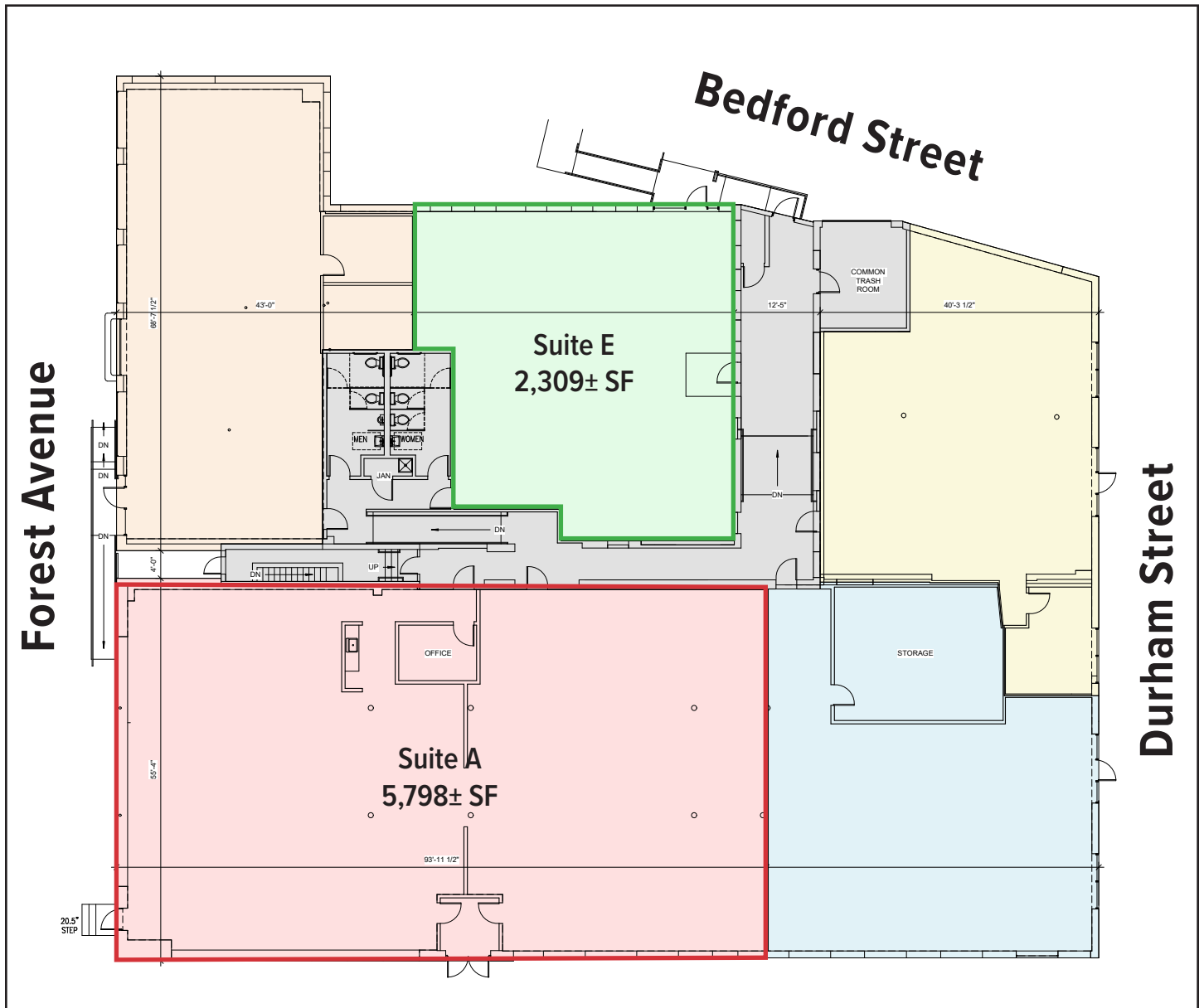


Property Overview

Owner	Oakhurst Properties, LLC
Building Size	15,781± SF
Available Space	Suite A: 5,798± SF Suite E: 2,309± SF
Zoning	Business Community (B2)
Year Built	1962
Construction	Brick/concrete block
Flooring	Commercial grade tile
Parking	Free, on-site
Road Frontage	Forest Avenue, Bedford Street and Durham Street
NNN's	\$5.40/SF

FOR LEASE : SUITE A - \$18.00/SF NNN – SUITE E - \$16.00/SF NNN





The information contained herein has been given to us by the owner of the property or other sources we deem reliable. We have no reason to doubt its accuracy, but we do not guarantee it. All information should be verified prior to purchase or lease.