

Build-to-suit or Ground Lease
Retail Pad Site

Up to 20,000± SF



33 Hannaford Drive

China, Maine

Property Description

We are pleased to offer this retail pad site for build-to-suit or ground lease at the Hannaford in China. Located along Route 202 & Route 32, the pad is approved for a 20,000± SF single-story building.



Broker Contact

Charlie Craig

207.773.7100

charlescraig@dunhamgroup.com

www.dunhamgroup.com

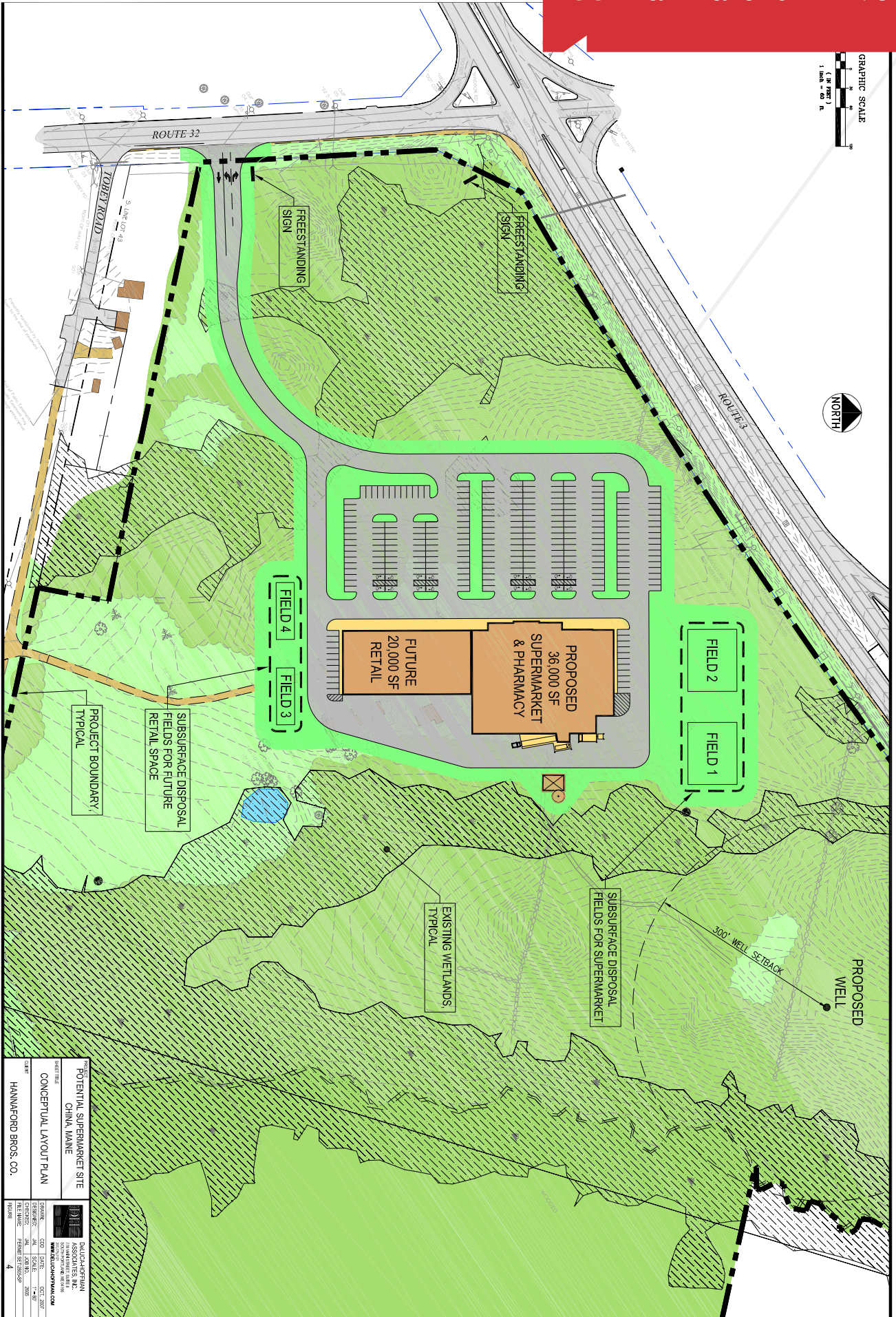
Property Information

Available Pad Size	Up to 20,000± SF
Parking	In common
Zoning	Residential
Co-tenants	Hannaford

FOR GROUND LEASE : \$75,000/year



33 Hannaford Drive



PROJECT		POTENTIAL SUPERMARKET SITE	
CLIENT		CHINA, MAINE	
CONCEPTUAL LAYOUT PLAN			
DATE		11-20-2009	
DRAWN		GSD	
CHECKED		GSD	
SCALE		1" = 50'	
SHEET NO.		4	
TOTAL SHEETS		4	
DATE		OCT. 2009	
SCALE		1" = 50'	
SHEET NO.		4	
TOTAL SHEETS		4	

DANIEL A. GARDNER
 ARCHITECT ASSOCIATES, INC.
 100 WASHINGTON STREET, SUITE 100
 PORTLAND, MAINE 04101
 WWW.DANIELGARDNER.COM