

FOR LEASE

Industrial/Flex

23,072± | 2 Buildings



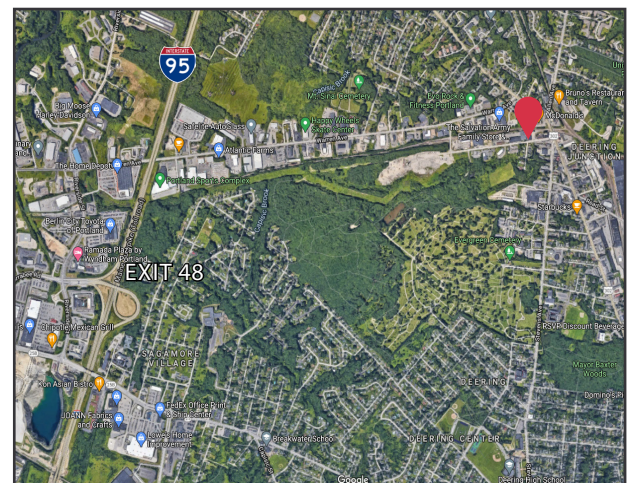
33 Bishop Street, Portland

Property Highlights

- Located just off Forest Avenue/Route 302
- Flexible space
- Build-to-suit available

Property Description

We are pleased to offer for lease two buildings on 1.27± acres at 33 Bishop Street. 33 Bishop Street offers multiple unique spaces with the ability to build-to-suit. The excellent location and flexible floor plans allow you to bring your vision to this rare IM zone offering in Morrill's Corner.



Greg Hastings, SIOR | ghastings@dunhamgroup.com
Sam LeGeyt | sam@dunhamgroup.com
207.773.7100 | dunhamgroup.com



Property Overview

Owner	Benjamin Construction
Total Building SF	23,072± SF
Lot Size	1.27± acres
Assessor's Reference	Map 293, Block A, Lot 8
Deed Reference	Book 36920, Page 286
Assessed Value	\$ 166,200 - Land \$ 1,008,800 - Buildings \$ 1,175,000 - Total
Taxes	\$ 23,448.06 (FY '20 - '21)
Zoning	IM Industrial
Utilities	Natural gas, municipal water & sewer, 3-phase electrical power
Parking	Ample, on-site

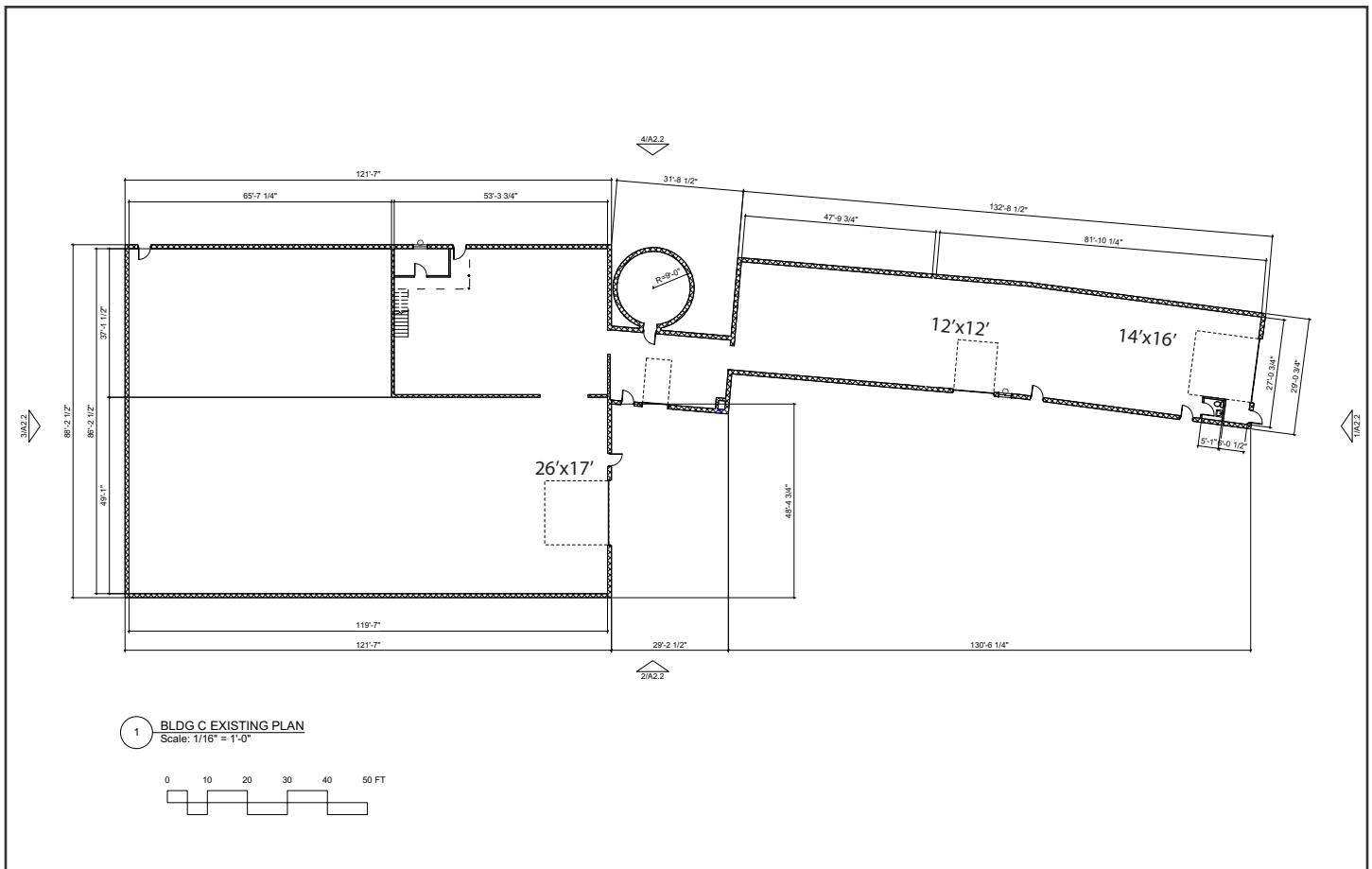
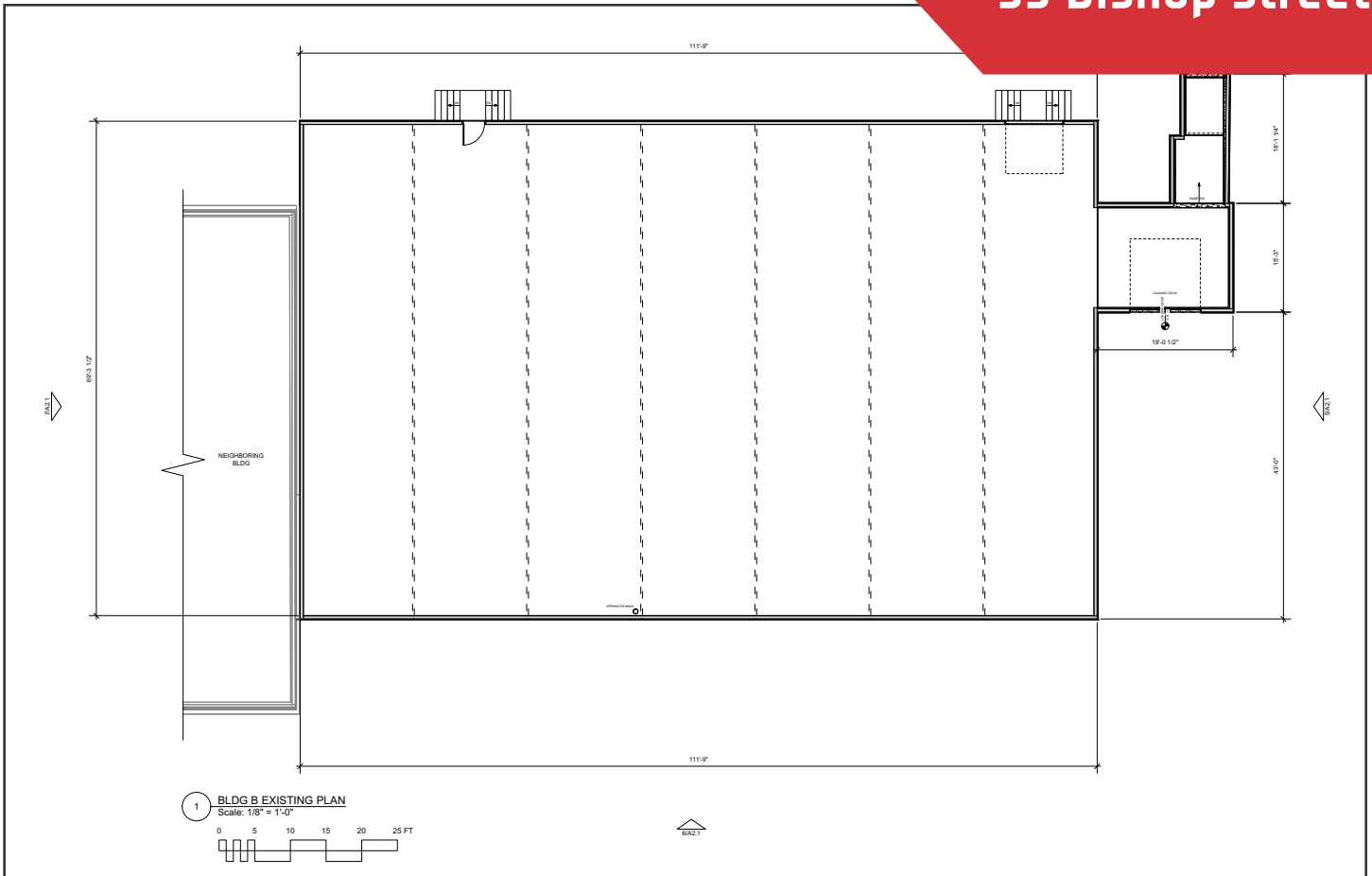
Building 1

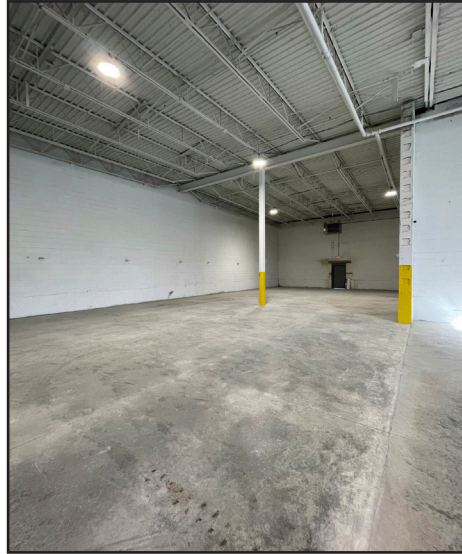
Building Size	7,738± SF
Building Use	Flex/Warehouse
Ceiling Height	12' 14'±
Loading Docks	One (1) One (1) 12' x 12'

Building 2

Building Size	15,333± SF
Building Use	Shop/Flex
Available Space	2,209 - 15,333± SF
Overhead Doors	Two (2)
Ceiling Height	16'-21'±
Drive-in OHDs	One (1) 26' x 17'

FOR LEASE : \$9.00/SF NNN





The information contained herein has been given to us by the owner of the property or other sources we deem reliable. We have no reason to doubt its accuracy, but we do not guarantee it. All information should be verified prior to purchase or lease.