

FOR LEASE

Industrial/Flex

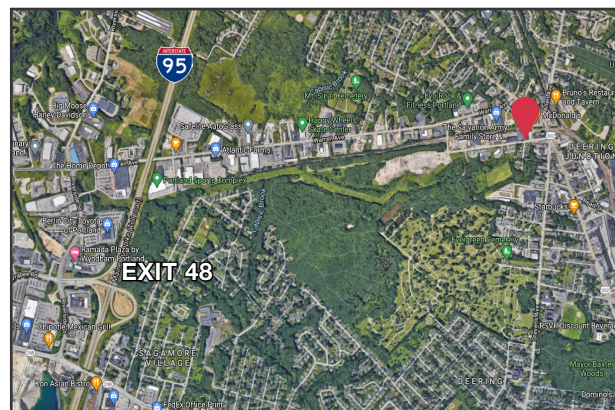
8,700± | \$10.50/SF NNN



33 Bishop Street, Portland

Property Highlights

- Located at Morrills Corner, just off Forest Avenue/Route 302
- Flexible Space
- Move-in Condition



Property Description

We are pleased to offer 8,700± SF of warehouse space for lease at 33 Bishop Street in Portland. This excellent location allows you to bring your vision to this rare IM zone offering at Morrill's Corner.

Tom Moulton, CCIM, SIOR | tmoulton@dunhamgroup.com

Katie Breggia | katie@dunhamgroup.com

207.773.7100 | dunhamgroup.com

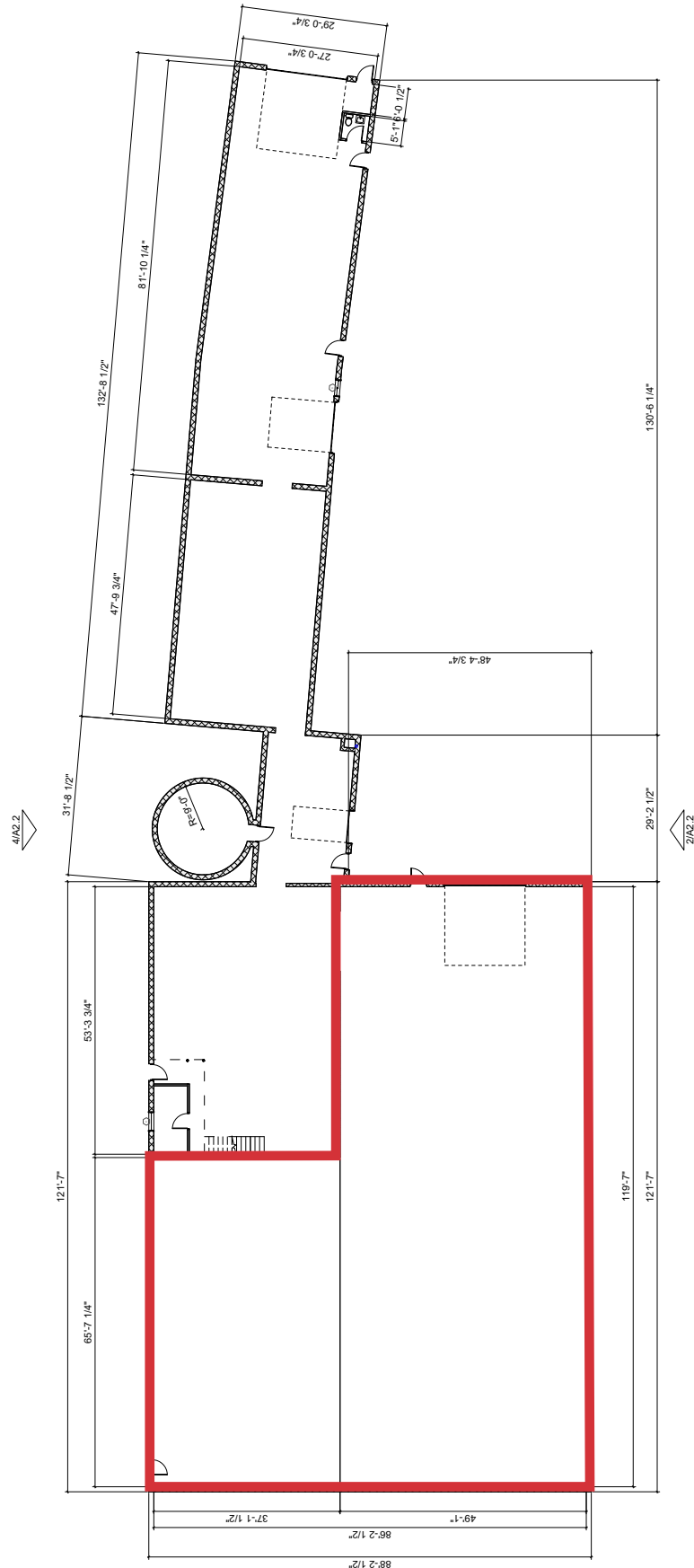


Property Overview

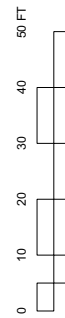
Owner	Benjamin Construction
Total Building SF	23,072± SF
Available Space	8,700± SF
Assessor's Reference	Map 293, Block A, Lot 8
Zoning	IM Industrial
Utilities	Natural gas, municipal water & sewer, 3-phase electrical power
Heating	Three (3), new natural gas fired ceiling hung units
Ceiling Height	22'
Overhead Door	One (1) motorized 17' x 26'
Restrooms	One (1) exclusive use restroom
Use	Warehouse/Storage
Parking	Ample, on-site

FOR LEASE : \$10.50/SF NNN - NNN's: \$2.00/SF





1 BLDG C EXISTING PLAN
Scale: 1/16" = 1'-0"





The information contained herein has been given to us by the owner of the property or other sources we deem reliable. We have no reason to doubt its accuracy, but we do not guarantee it. All information should be verified prior to purchase or lease.