

For Lease
Industrial/Flex/Office
29,398± SF | 3 Buildings



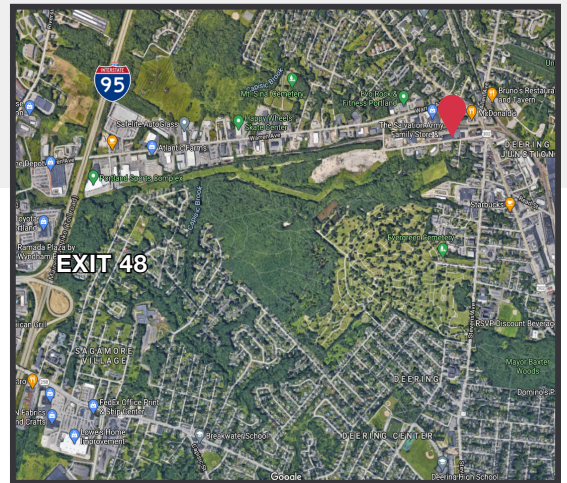
33 Bishop Street Portland, ME

Property Highlights

- Located just off Forest Avenue/Route 302
- Flexible space
- Build-to-suit available

Property Description

We are pleased to offer for lease three buildings on 1.27± acres at 33 Bishop Street. 33 Bishop Street offers multiple unique spaces with the ability to build to suit. The excellent location and flexible floor plans allow you to bring your vision to this rare IM zone offering in Morrill's Corner.



Broker Contact

Greg Hastings, SIOR
ghastings@dunhamgroup.com
Sam LeGeyt
sam@dunhamgroup.com

Property Overview

Owner	Benjamin Construction
Total Building SF	29,398± SF
Lot Size	1.27± acres
Assessor's Reference	Map 293, Block A, Lot 8
Deed Reference	Book 36920, Page 286
Assessed Value	\$ 166,200 - Land \$ 1,008,800 - Buildings \$ 1,175,000 - Total
Taxes	\$ 23,448.06 (FY '20 -'21)
Zoning	IM Industrial
Utilities	Natural gas, municipal water & sewer, 3-phase electrical power

Building 1

Building Size	6,326± SF
Building Use	Office/Flex
Drive-in OHDs	One (1) 14' x 16'

Building 2

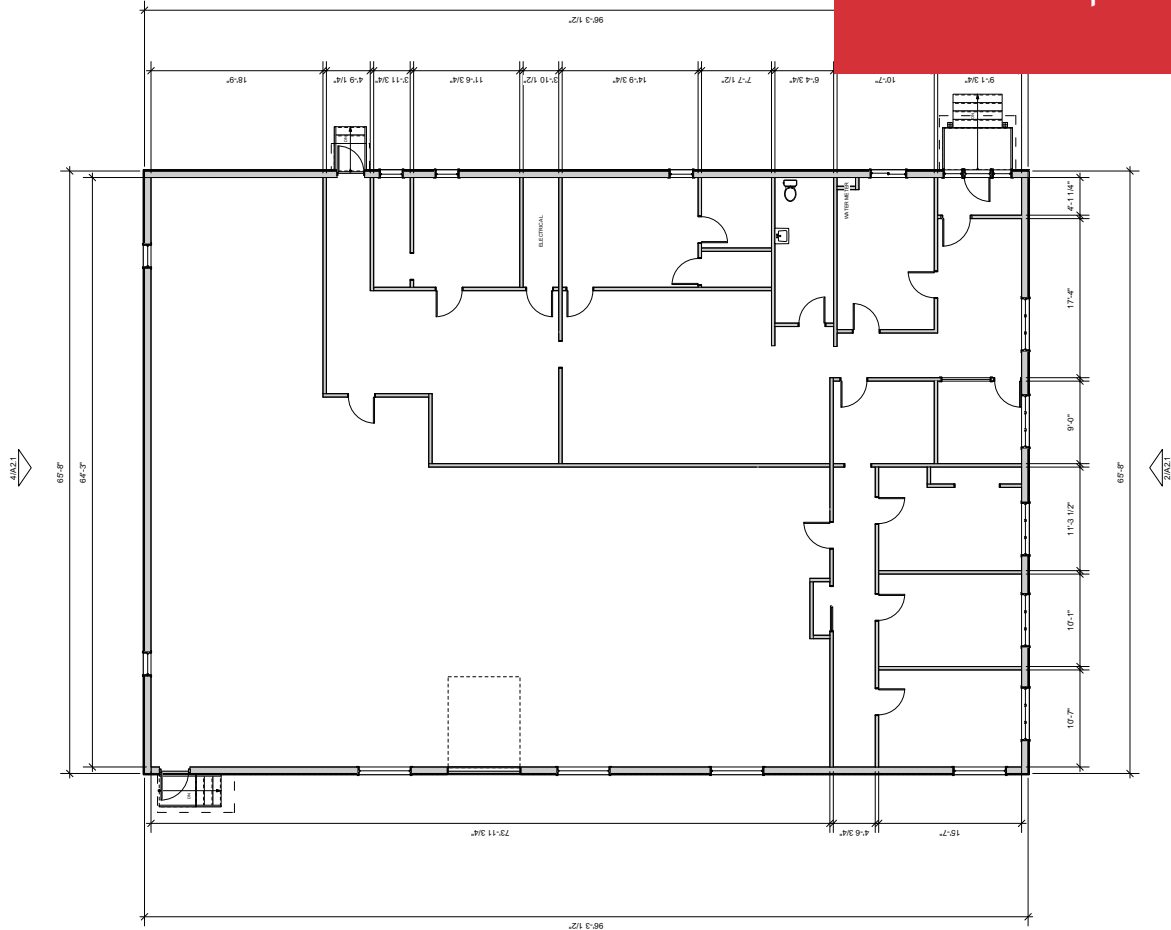
Building Size	7,738± SF
Building Use	Flex/Warehouse
Ceiling Height	12' 14'±
Loading Docks	One (1)
Drive-in OHDs	One (1) 12' x 12'

Building 3

Building Size	15,333± SF
Building Use	Shop/Flex
Available Space	2,209 - 15,333± SF
Overhead Doors	Two (2)
Ceiling Height	16'-21'±
Drive-in OHDs	One (1) 26' x 17'

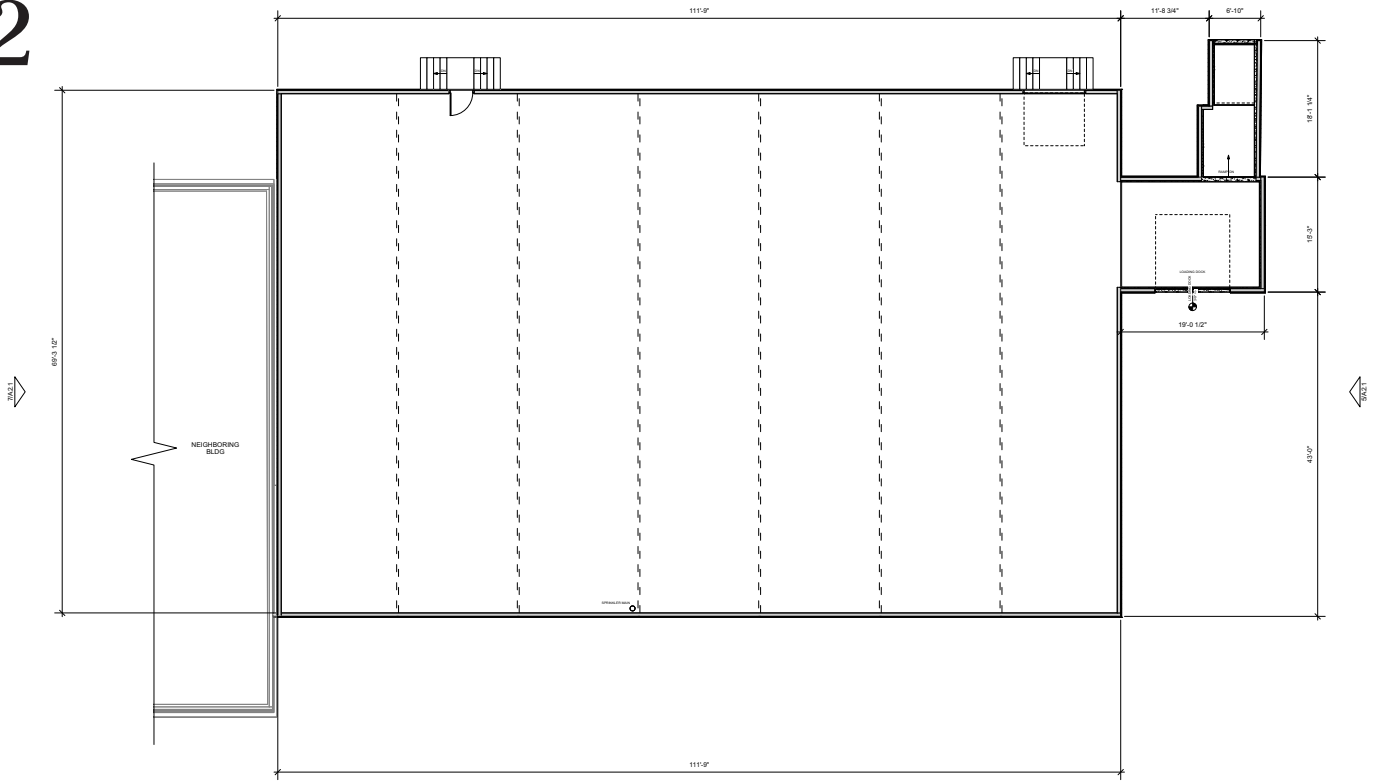
FOR LEASE : SEE BROKER

1



1 BLDG A EXISTING PLAN
Scale: 1/8" = 1'-0"
0 5 10 15 20 25 FT

2



1 BLDG B EXISTING PLAN
Scale: 1/8" = 1'-0"
0 5 10 15 20 25 FT

3

