

For Lease
Industrial Building
8,000 - 10,000± SF

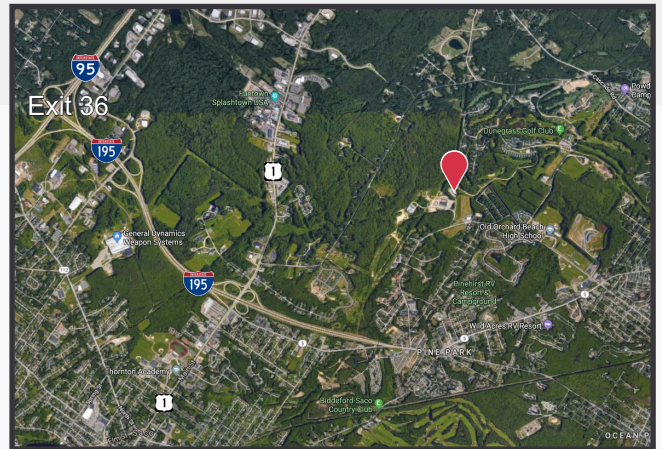


3 Vallee Lane

Old Orchard Beach, ME 04064

Property Highlights

- 8,000 - 10,000± SF Build-to-suit
- Light industrial building
- Easy access to I-95, Exit 36



Property Description

We are pleased to offer for lease up to 10,000± SF of light industrial space at 3 Vallee Lane. The newly constructed building can be available in approximately 12 months from the lease signing. Vallee Lane is located 3± miles from Maine Turnpike/I-95 Exit 36 and 1± mile from I-195 on-ramp. See broker for pricing.

Broker Contact

Sam LeGeyt

Greg Hastings, SIOR

sam@dunhamgroup.com

ghastings@dunhamgroup.com

3 Vallee Lane

