

FOR LEASE

Class A Office Space

14,705± SF | \$12.00/SF NNN



29 Lowell Street Lewiston, ME

- *Class A Office Building*
- *Excellent Downtown Location*
- *Beautiful Brick & Beam Space*

Tom Moulton, CCIM, SIOR | tmoulton@dunhamgroup.com

Katie Breggia | katie@dunhamgroup.com

207.773.7100 | dunhamgroup.com

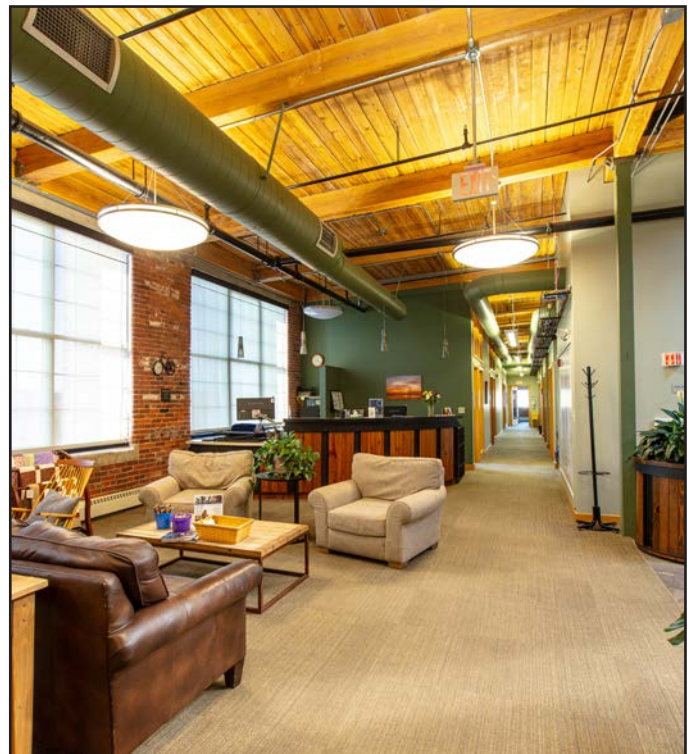




Property Description

29 Lowell Street is a five-story Class A office building located just off Main Street in downtown Lewiston—immediately over the Longley Bridge and adjacent to Central Maine Medical Center. This historic building features high ceilings and abundant natural light.

The available space is on the top floor of the building and offers views of the Androscoggin River and a well-balanced layout, including private offices, open work areas, and conference rooms—ideal for a variety of professional users.





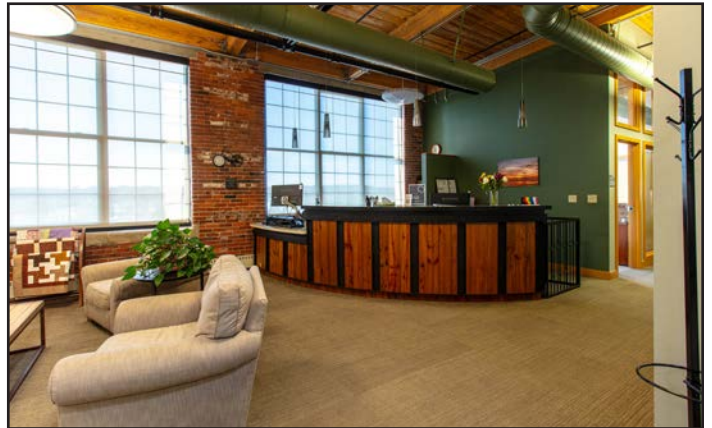
29 Lowell Street

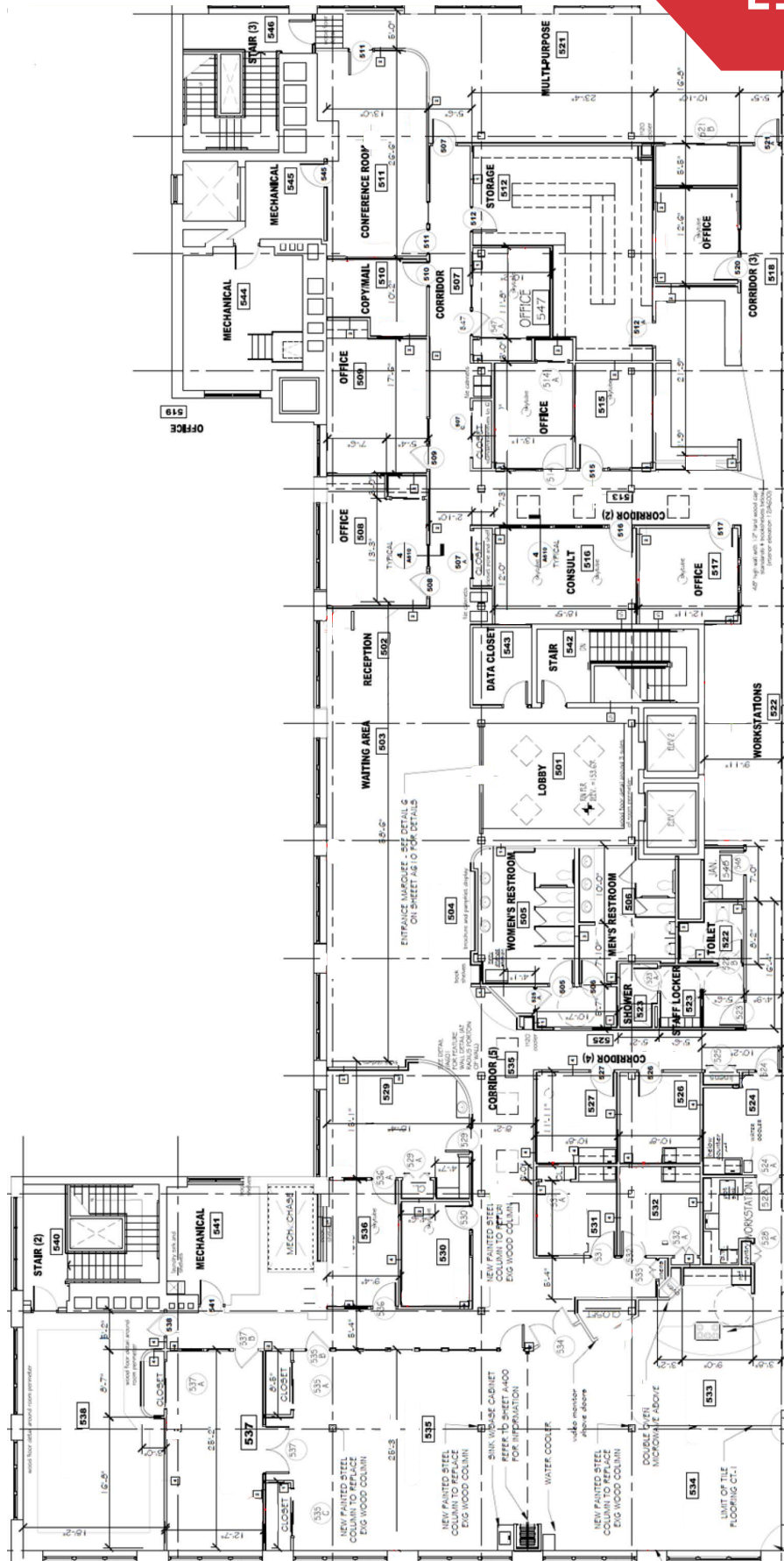


Property Overview

Owner/Landlord	Central Maine Healthcare Corp.
Building Size	73,525± SF
Space Available	Fifth Floor: 14,705± SF
Year Built	1910, 5th floor renovated in 2012
Elevator	Two passenger elevators
Sprinkler	Yes, dry system
Roof	Rubber membrane
HVAC	Natural gas, FHA distribution
Utilities	Municipal water/sewer
Assessor's Reference	Map 207, Lot 29
Deed Reference	Book 4373, Page 18
Zoning	CV - Centreville District
Parking	Available in adjacent Landlord controlled lots at fair market rates

FOR LEASE : \$12.00/SF NNN





The information contained herein has been given to us by the owner of the property or other sources we deem reliable. We have no reason to doubt its accuracy, but we do not guarantee it. All information should be verified prior to purchase or lease.

QUESTIONS? CONTACT CAROL BODEN @ 755.3859, bodena@cmhc.org