

FOR LEASE

Office Suite

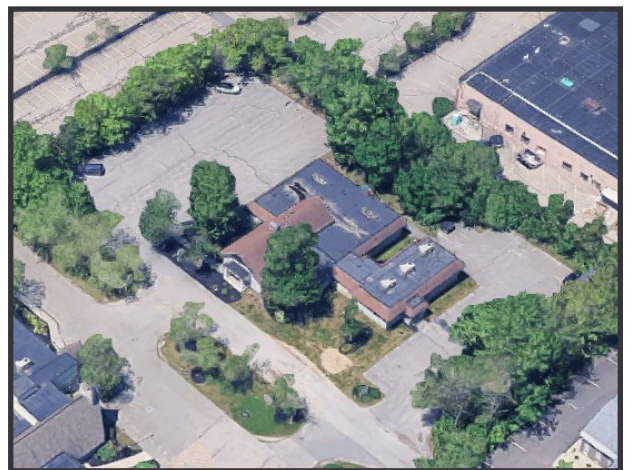
400± SF



260 Western Avenue, South Portland

Property Highlights

- *Conveniently accessible from I-295 and I-95*
- *Abundant on-site parking*
- *Excellent signage potential*



Property Description

We are pleased to offer an office suite for lease at this convenient Western Avenue, South Portland location. This is ideal space for therapist medical services or office/medical users. Just minutes from downtown Portland, the property is in the vicinity of the Maine Mall, the Portland International Jetport, and interstates I-95 and I-295.



Broker Contact

Chris Craig

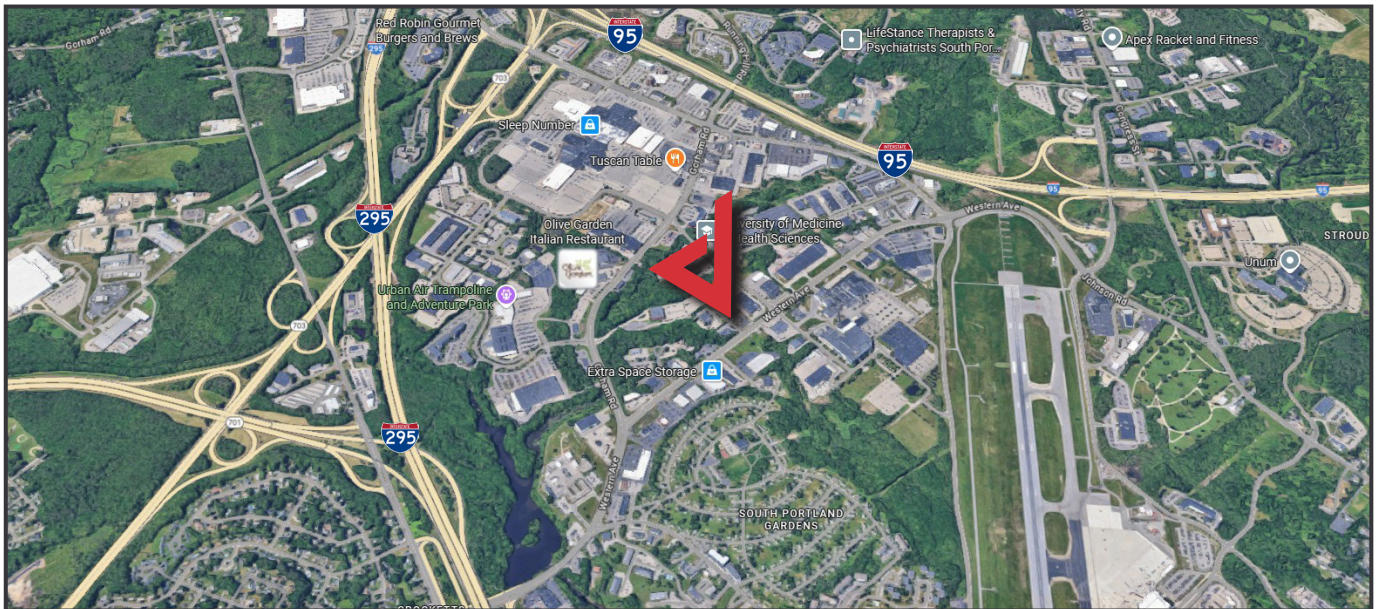
chris@dunhamgroup.com

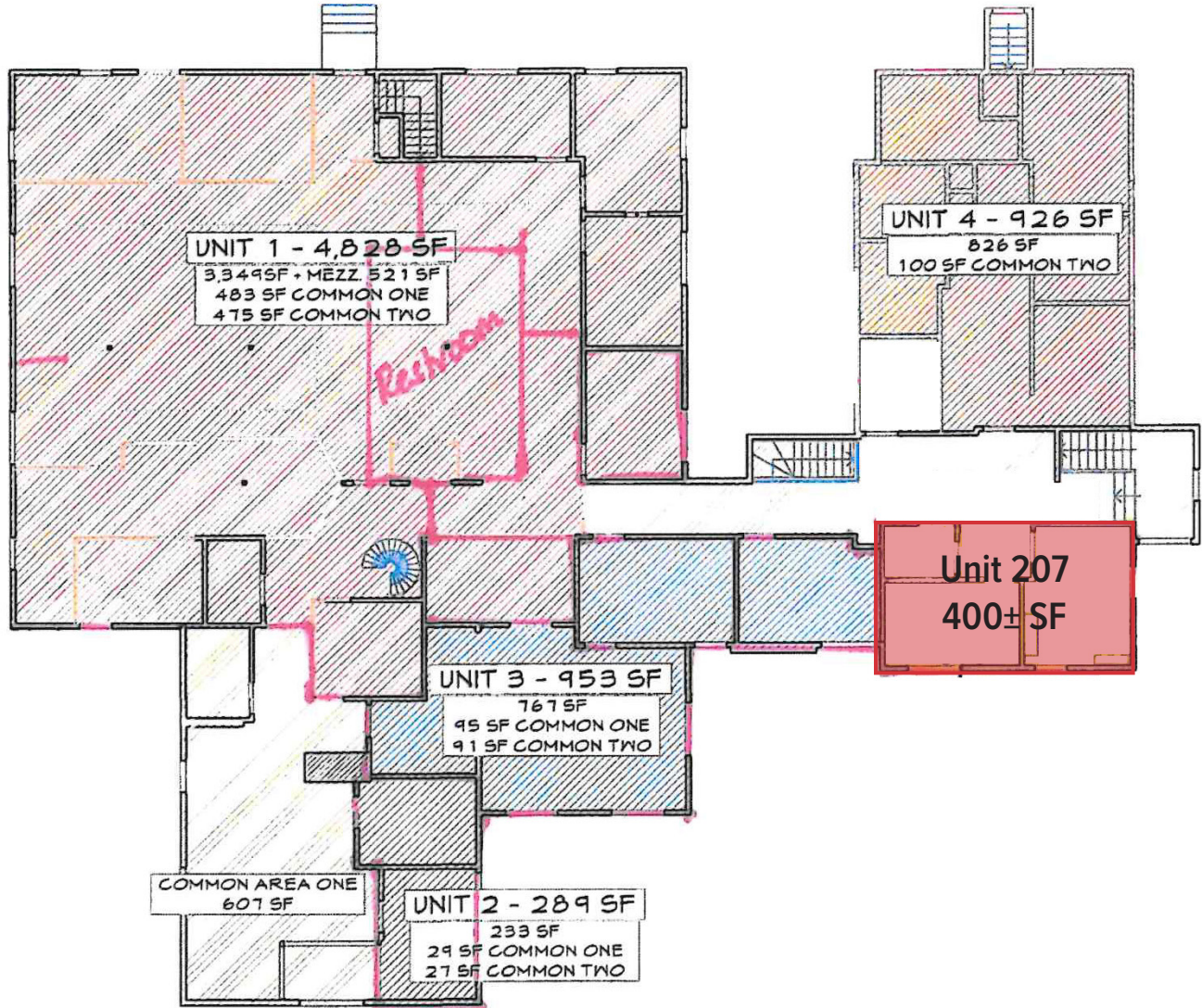
207.773.7100

Property Overview

Building Size	12,463± SF
Assessor's Reference	Map 67, Lot 21
Zoning	Suburban Commercial (CS)
Available Space	Unit 207 - 400± SF
Year Built	1975
Construction	Wood frame
Flooring	Carpet and tile
Utilities	Municipal water & sewer, electric
Heat	Gas-fired forced hot air
Air Conditioning	Central A/C
Lighting	LED and fluorescent
Sprinkler System	Yes, throughout building
Parking	Ample, paved parking on-site
Signage	Available on pylon, lobby, and at the entrance to suites

FOR LEASE : \$650/month Gross





260 Western Avenue
Floor Plans