

FOR LEASE

Office Building

8,000± SF | \$13.00/SF NNN



236 Gannett Drive, South Portland

Property Highlights

- Conveniently located in Cummings Road Business Park
- 4.5 parking spaces per 1,000 SF of rentable area
- Fenced Exterior Play Area
- 2± miles from Maine Mall area, Maine Turnpike/I-95, and I-295



Property Description

We are pleased to offer for lease this single tenant, well-maintained suburban office and flex building in Cummings Road Business Park. The property is highly accessible from both the Maine Turnpike/I-95 and I-295 and offers a fenced exterior - a great addition for daycares.



Broker Contact

Sam LeGeyt

sam@dunhamgroup.com

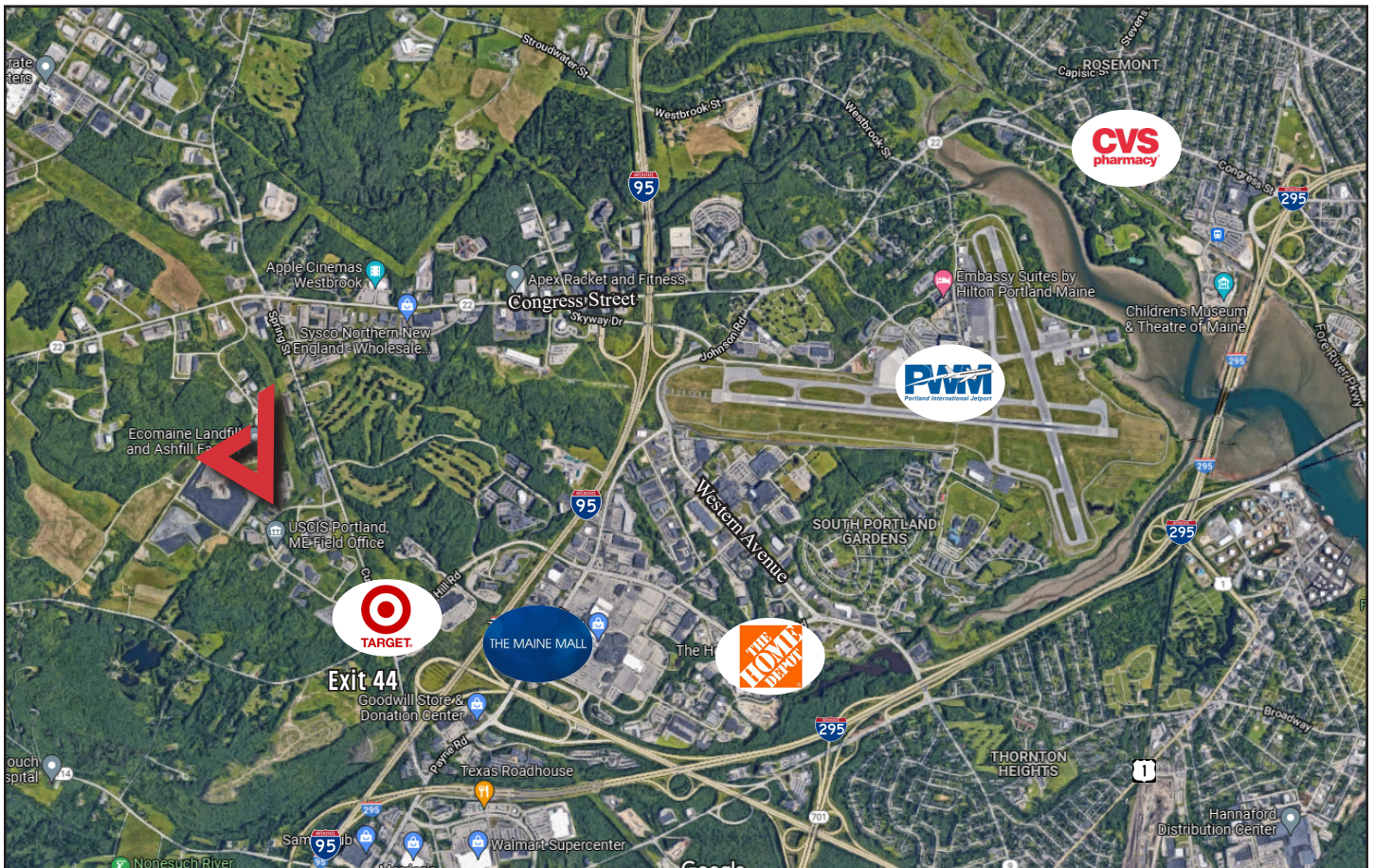
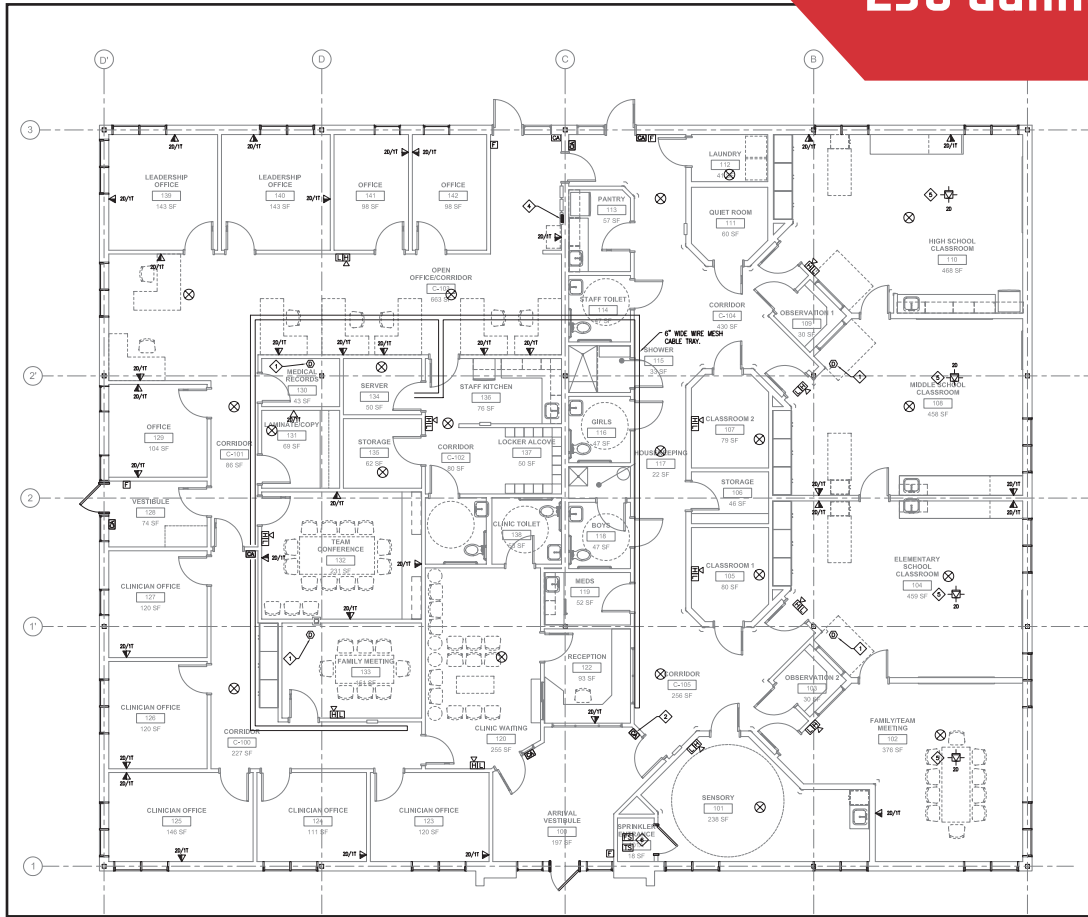
207.773.7100

Property Overview

SubLandlord	Maine Behavioral Health
Building Size	8,000± SF
Lot Size	2.6± acres
Assessor's Reference	Map 85, lot 13
Available Space	8,000± SF
Zoning	IL - Light Industrial
Year Built	1998
Building Construction	Concrete Block
Roof	Rubber membrane
Utilities	Municipal water and sewer
HVAC	Gas-fired hot air, Central AC
Lighting	LED fixtures
Sprinkler System	Yes - wet system
Bathrooms	Four (4)
Parking	36± spaces

FOR LEASE : \$13.00/SF NNN - estimated NNN's : \$7.16/SF

236 Gannett Drive



The information contained herein has been given to us by the owner of the property or other sources we deem reliable. We have no reason to doubt its accuracy, but we do not guarantee it. All information should be verified prior to purchase or lease.