

# FOR LEASE

## 6-Bay Garage

3,730± SF | 0.30± acres



## 234 Bath Road, Brunswick ME

We are pleased offer this 3,730± SF, 6-bay service garage with excellent visibility and access on a high-traffic count corridor in Brunswick. Most recently occupied by Maine Auto, the property offers excellent access to Route One, Cook's Corner, and located in front of the WalMart and Lowe's off Bath Road.

- **6-Bay Garage Building**
- **0.30 Acres**
- **High Visibility & Traffic Counts**

### Broker Contact

Frank O'Connor, CCIM, SIOR | [frank@dunhamgroup.com](mailto:frank@dunhamgroup.com)

Bryan Plourde | [bryan@dunhamgroup.com](mailto:bryan@dunhamgroup.com) | 207.773.7100



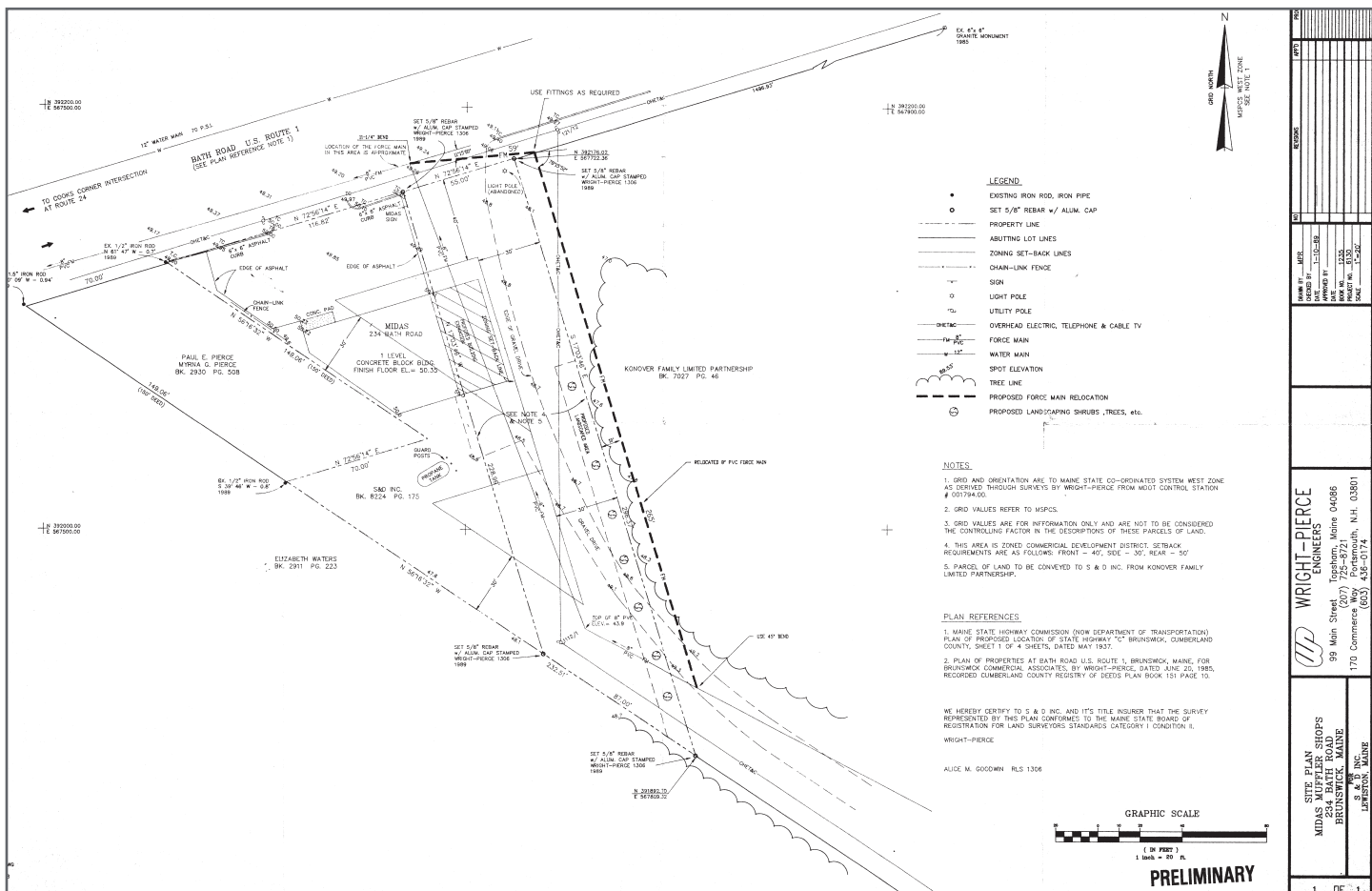
## Property Overview

Owner	TASA, LLC
Assessor's Reference	Map CC2, Lot 18
Deed Reference	Book 24531, Page 248
Building Size	3,730± SF
Site Size	0.30± acres
Zoning	GM-4
Building Age	1900, renovated
Construction	Masonry, metal
Roof	Flat, metal
Siding	Painted concrete
Flooring	Concrete slab
HVAC	Gas-fired
Overhead Doors	Six (6)
Utilities	Public water and sewer
Parking	20±
Traffic Counts	20,460 AADT
Road Frontage	116'

**FOR LEASE : \$20.00/SF NNN**

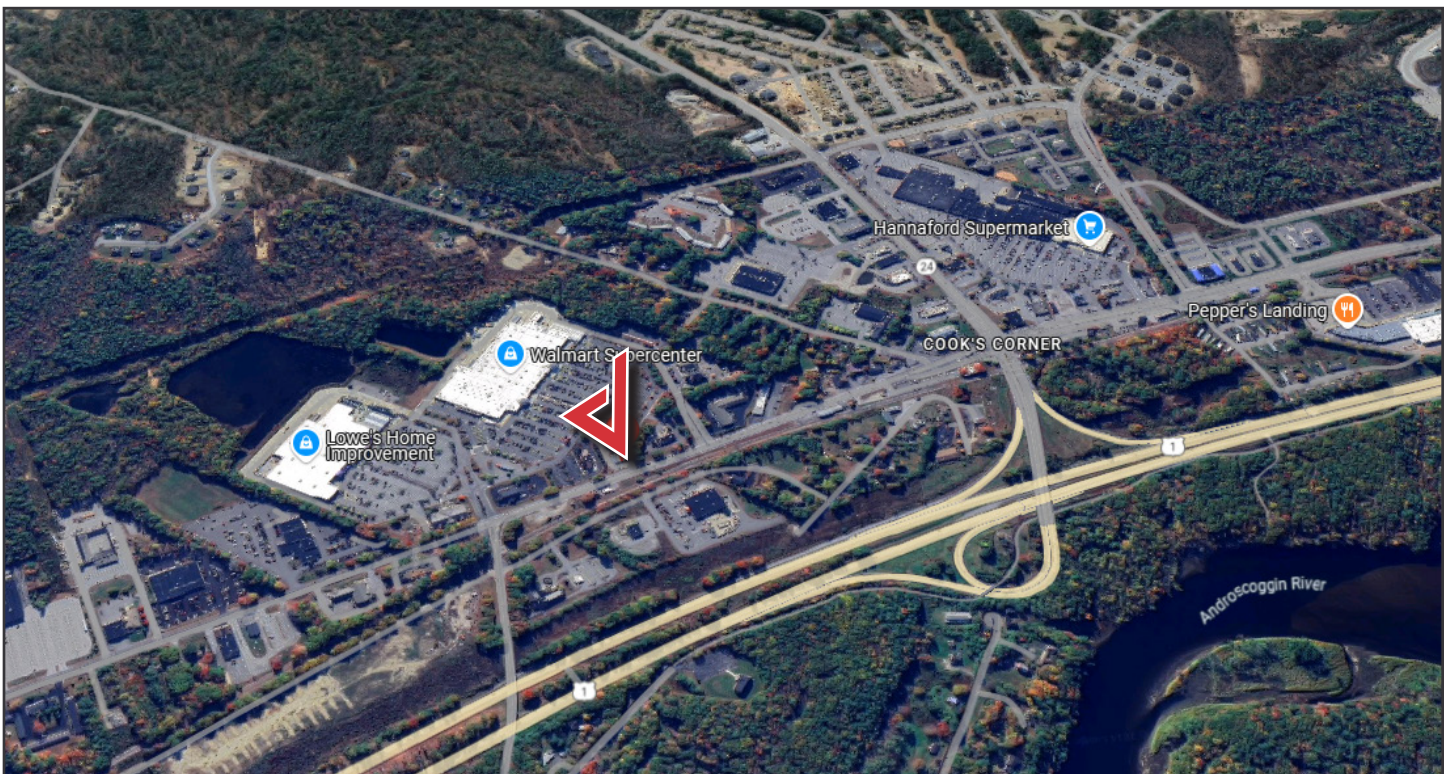


# 234 Bath Road





# 234 Bath Road



The information contained herein has been given to us by the owner of the property or other sources we deem reliable. We have no reason to doubt its accuracy, but we do not guarantee it. All information should be verified prior to purchase or lease.