

For Lease
Office Building
72,336± SF



225 Gorham Road

South Portland, Maine

Property Highlights

- Excellent access to I-95 and I-295
- Ample on-site parking
- Flexible floor plans from 3,000± SF up.



Property Description

We are pleased to offer 225 Gorham Road in South Portland for lease. The property, currently occupied by WEX, consists of 72,000± SF of Class A office space on four floors. Each floor can be subdivided down to approximately 3,000± SF and will be available June 2019.

Broker Contact

Frank O'Connor, CCIM, SIOR

Katie Millett, Esq.

foconnor@dunhamgroup.com

kmillett@dunhamgroup.com

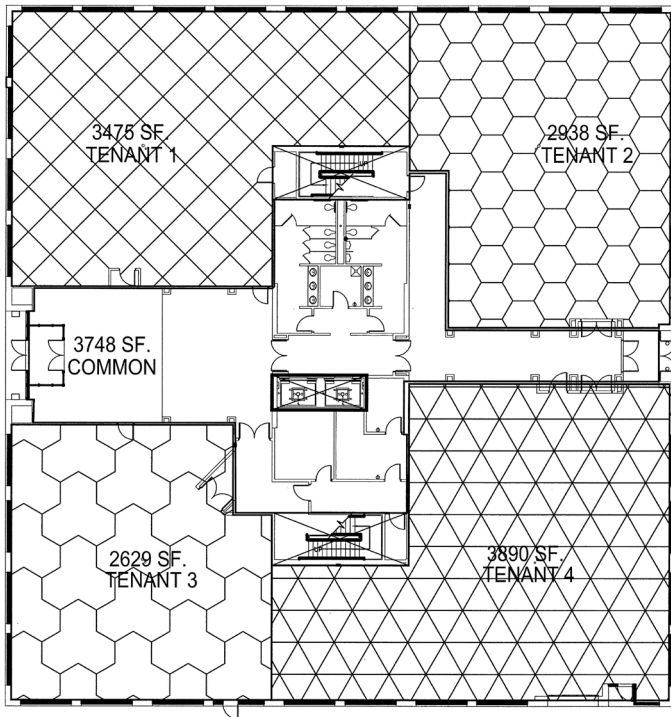
225 Gorham Road

Property Overview

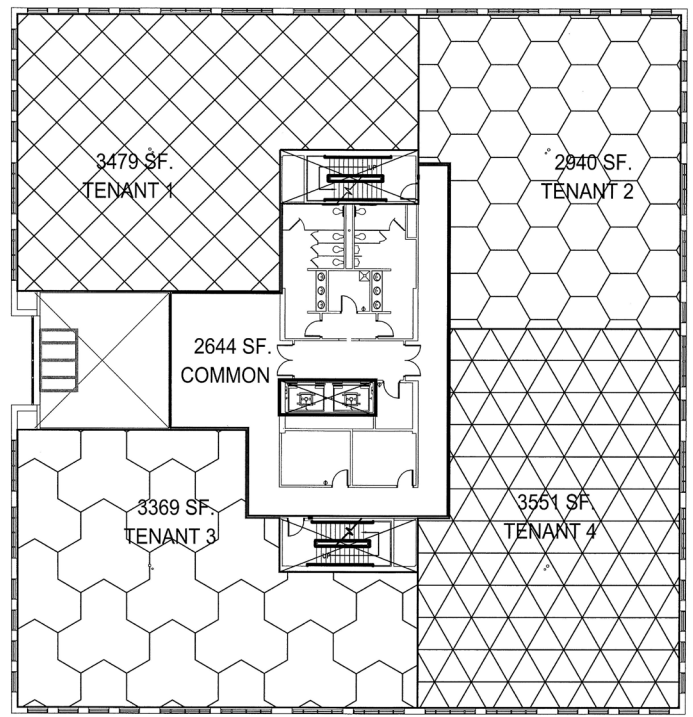
Owner	Longcreek Properties, LLC
Building Sizes	72,336± SF
Lot Size	14.49± acres
Assessor's Reference	Map 67, Lot 7
Deed Reference	Book 13494, Page 122
Available Space	72,336± SF
Space Breakdown	18,000± SF per floor; subdividable down to 3,000± SF
Building Age	2002
Building Construction	Steel frame with brick/masonry siding
Roof	Flat, rubber membrane
Flooring	Carpet, commercial grade tile
No. of Stories	Four (4)
Utilities	Public water and sewer
HVAC	Gas-fired forced hot air
Sprinkler System	Full wet system
Available	June 2019
Parking	Multiple spaces per floor

FOR LEASE : \$16.00/SF NNN

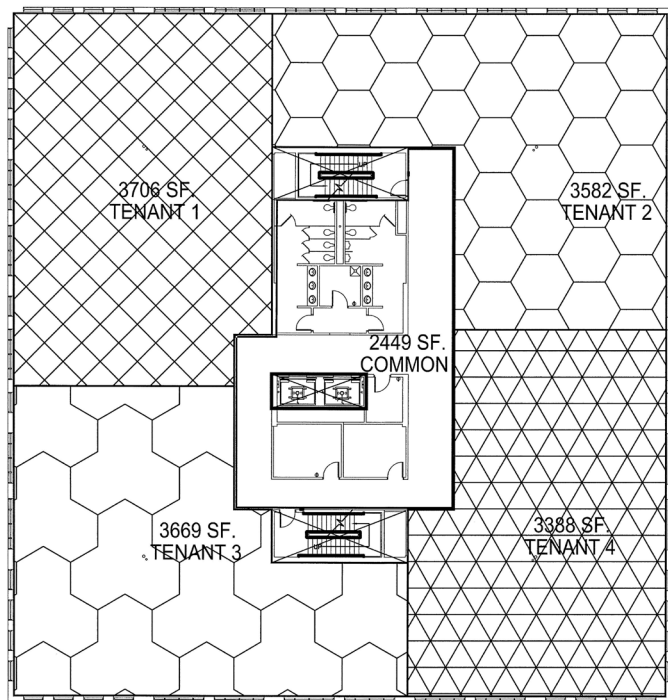




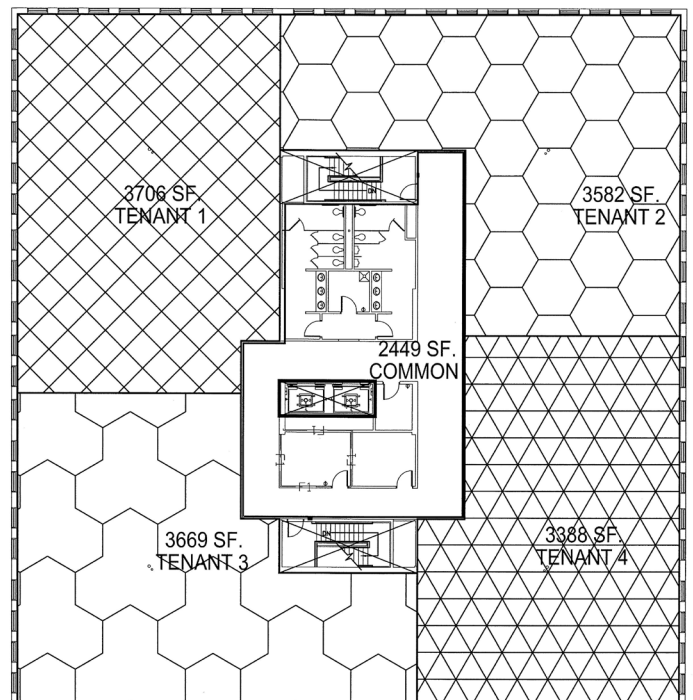
FLOOR 1



FLOOR 2



FLOOR 3



FLOOR 4

225 Gorham Road



The information contained herein has been given to us by the owner of the property or other sources we deem reliable. We have no reason to doubt its accuracy, but we do not guarantee it. All information should be verified prior to purchase or lease.