

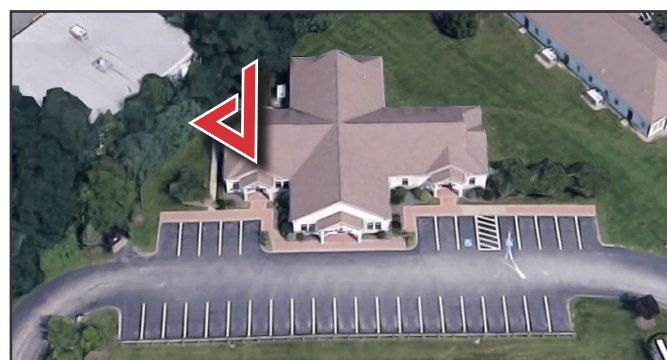
FOR LEASE
Office/Medical Suite
1,105± SF | \$16.00/SF NNN



200 Professional Drive, Scarborough

Property Highlights

- Ample, on-site parking
- Excellent signage potential
- Full dry basement included
- Available August 1, 2026



Property Description

We are pleased to offer this 1,105± SF Class A office/medical suite for lease at 200 Professional Drive in Scarborough. This ground level suite is in excellent condition and offers an abundance of natural light. Located just off US Route 1 near Maine Medical Center's Scarborough Campus.

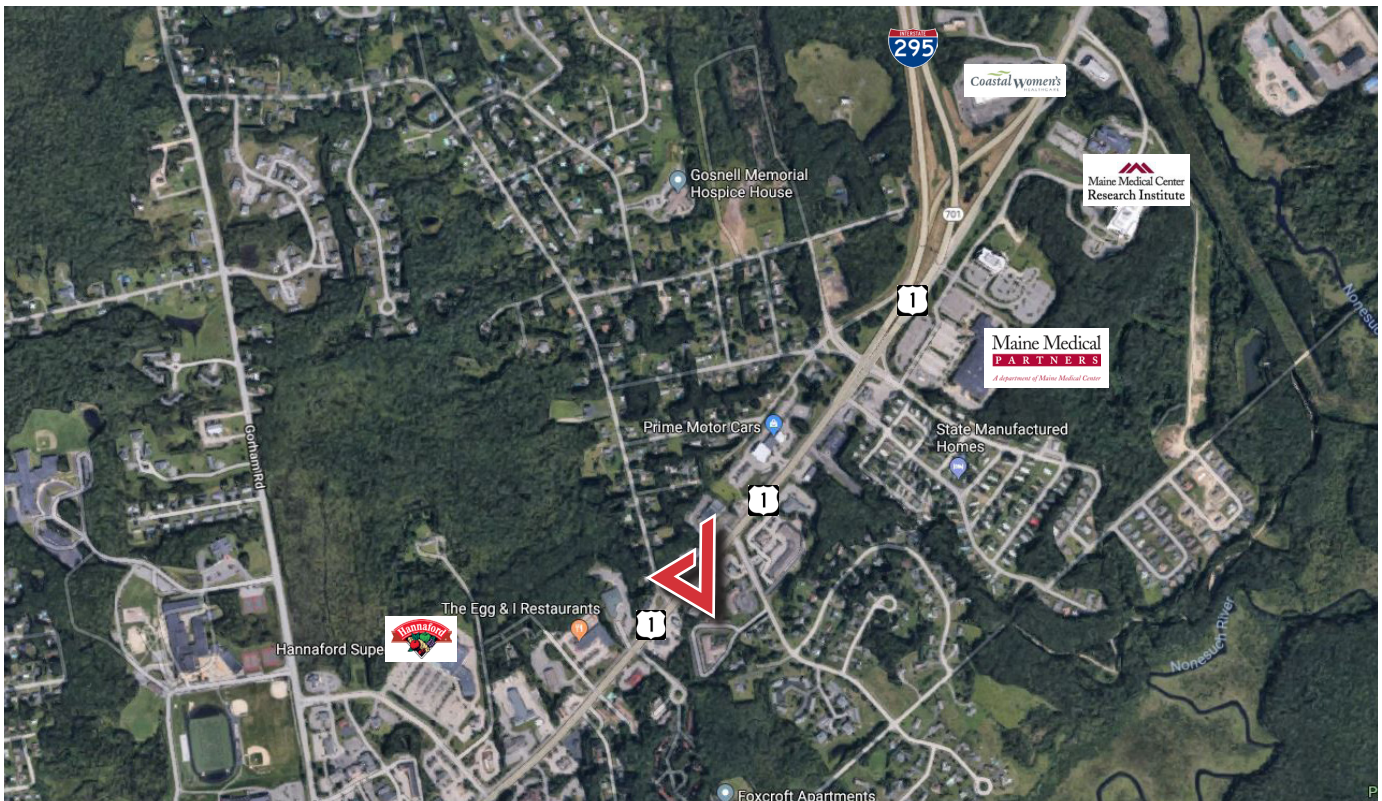
Tom Moulton, CCIM, SIOR | tmoulton@dunhamgroup.com
Katie Breggia | katie@dunhamgroup.com
207.773.7100 | dunhamgroup.com

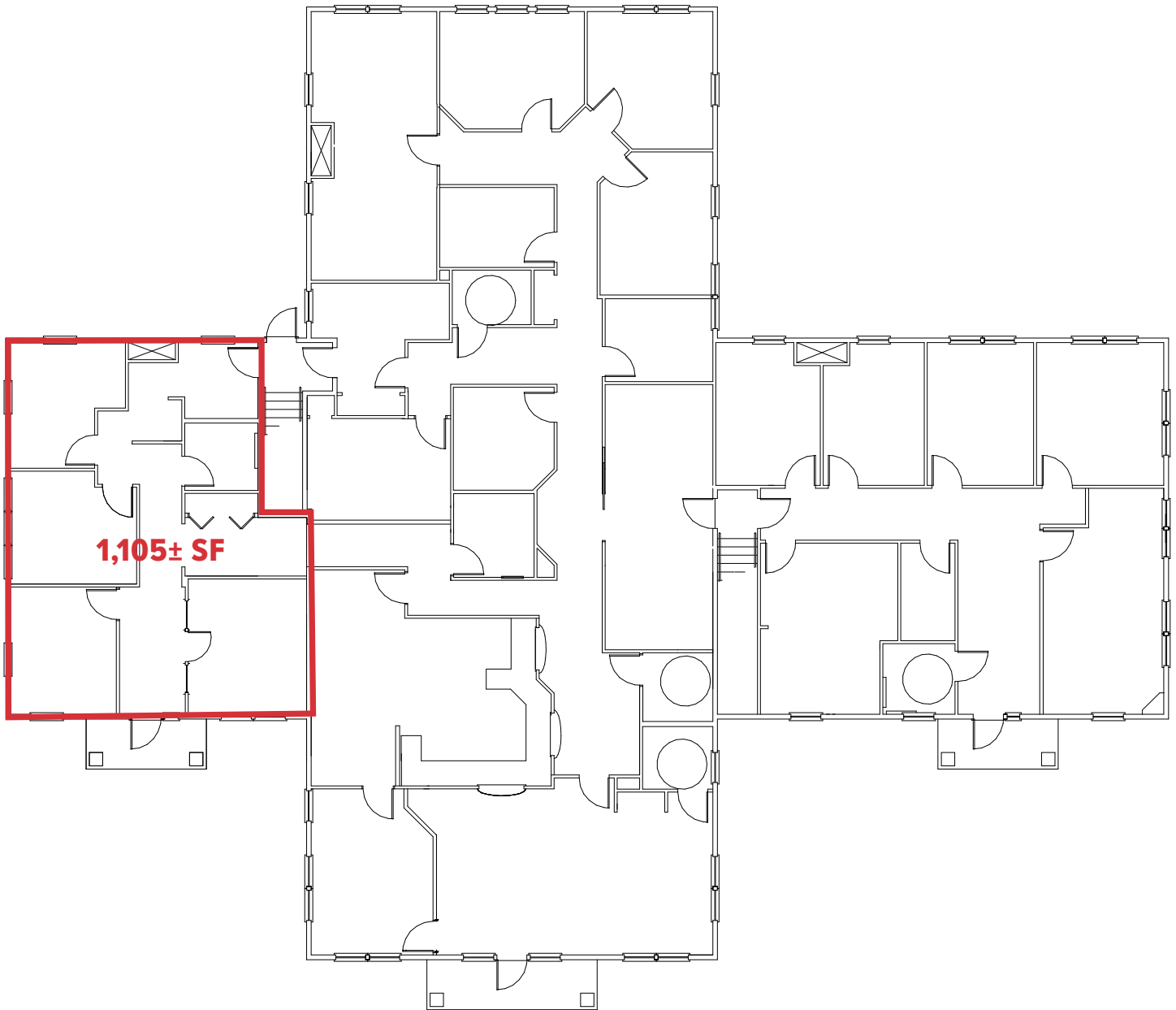


Property Overview

Available Space	1,105± SF and full height dry basement
Assessor's Reference	Map U45, Lot 13B
Zoning	Town and Village Center (TVC)
Building Construction	Wood framed
No. of Stories	One (1)
Roof	Pitched roof with architectural shingles
Floors	VCT tile and carpet
Electrical	Separately metered 200 Amp, 3-phase
HVAC	Natural gas fired - lot air distributor
Utilities	Municipal water and sewer, natural gas
Parking	Ample on-site, paved
Accessibility	Located 1/10± mile from the I-295 Scarborough connector

FOR LEASE : \$16.00/SF NNN





The information contained herein has been given to us by the owner of the property or other sources we deem reliable. We have no reason to doubt its accuracy, but we do not guarantee it. All information should be verified prior to purchase or lease.