

FOR LEASE

Retail/Office Space

1,500± SF | \$2,000/month MG



171-175 Main Street, South Portland

Property Highlights

- *Direct access to US Route One*
- *Minutes to I-95 and I-295*



Property Description

We are pleased to offer 1,500± SF of first floor retail/office space for lease at 171-175 Main Street in South Portland. The property features a versatile layout with direct access to US Route One. Abundant on-site parking for customers in a convenient South Portland location.



Broker Contact

Chris Craig

chris@dunhamgroup.com

207.773.7100

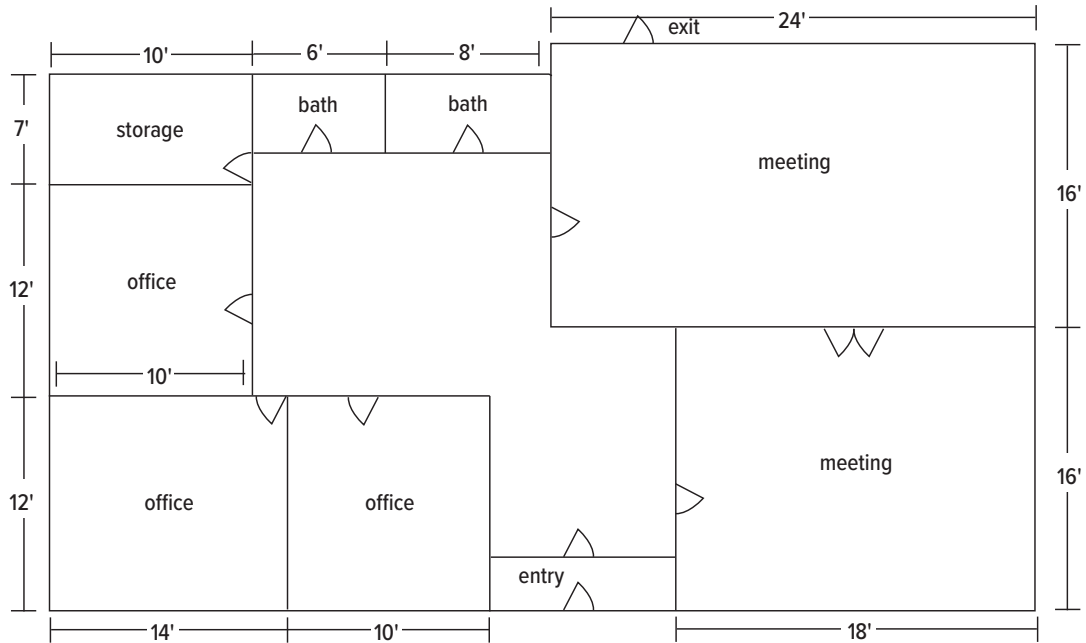
Property Overview

Owner	3PM Realty, LLC
Assessor's Reference	Map 32, Lot 10
Zoning	Commercial District
Building Size	7,784± SF
Available Space	1,500± SF
Lot Size	0.59 acres
Year Built	1974
Building Construction	Wood frame, concrete block
Roof	Rubber membrane
Siding	Wood shingles
Flooring	Carpet, tile
Utilities	Municipal water
HVAC	Central
Electrical	110 Amp
Lighting	LED
Sprinkler System	No
Bathrooms	Two (2)
Parking	Abundant on-site

FOR LEASE : \$2,000/month MG

175 Main Street, South Portland

Total Square Footage - 1,500± SF



The information contained herein has been given to us by the owner of the property or other sources we deem reliable. We have no reason to doubt its accuracy, but we do not guarantee it. All information should be verified prior to purchase or lease.