

FOR LEASE

Office Space

500± SF | \$15.00/SF MG

162 Main Street, Yarmouth

Property Highlights

- 3rd Floor Office Suite
- Period Architectural Details
- Four small offices with workstations
- Great Yarmouth Village Location

Property Description

We are pleased to offer a 500± SF of charming office space at the Payne Elwell house in the historic converted home on Main Street in Yarmouth village. The building was constructed in 1792 and has been updated and well maintained over the years. Other amenities include main street exposure, on-site parking and highly visible pylon signage.

Broker Contact

Charlie Craig | charlescraig@dunhamgroup.com
207.773.7100 | dunhamgroup.com

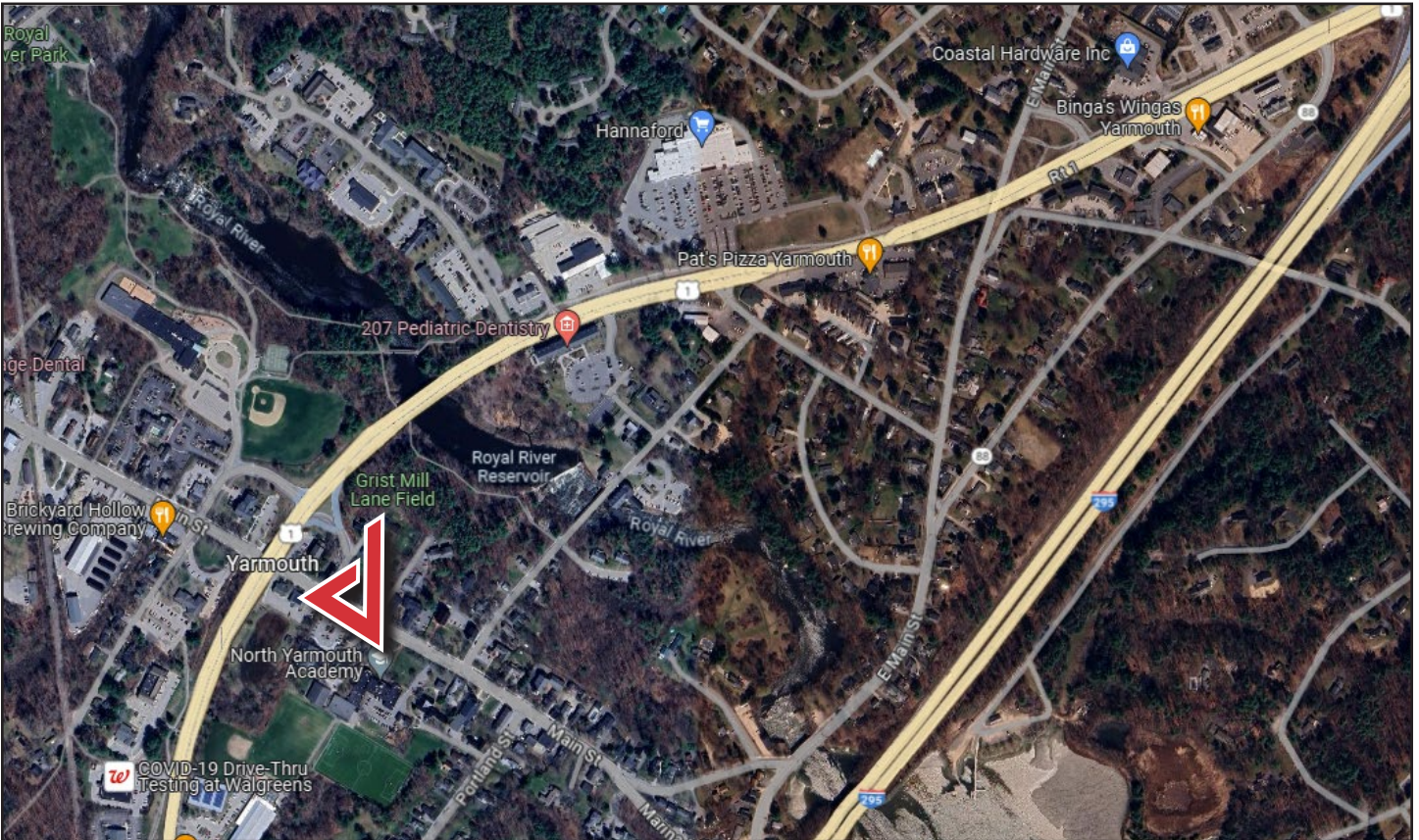


Property Overview

Building Size	6,623± SF
Available Space	500± SF (Four small offices with workstations)
Floor	Third floor
Zoning	Village District
Building Age	1792
Construction	Wood frame
Roof	Asphalt shingle
Siding	Clapboard wood
Flooring	Wood and carpet
Heat/HVAC	Oil fired forced hot water, central AC and window units
Utilities	Public water and sewer, internet and phone
Electrical	200 Amp
Sprinkler System	None
Bathrooms	Yes
Parking	On-site and street
Accessibility	Curb cut and driveway off Main Street
Traffic Counts	8,000± per day
Available	Immediately

FOR LEASE : \$15.00/SF MG

162 Main Street



The information contained herein has been given to us by the owner of the property or other sources we deem reliable. We have no reason to doubt its accuracy, but we do not guarantee it. All information should be verified prior to purchase or lease.