

FOR LEASE

Retail Space

1,340 - 3,200± SF



Westgate Shopping Center

1364 Congress Street, Portland

- *Grocery-anchored Shopping Center*
- *913K Annual Visits*
- *Average Daily Traffic Count 24,824*

Broker Contact

Frank O'Connor, CCIM, SIOR | frank@dunhamgroup.com

Bryan Plourde | bryan@dunhamgroup.com





Property Description

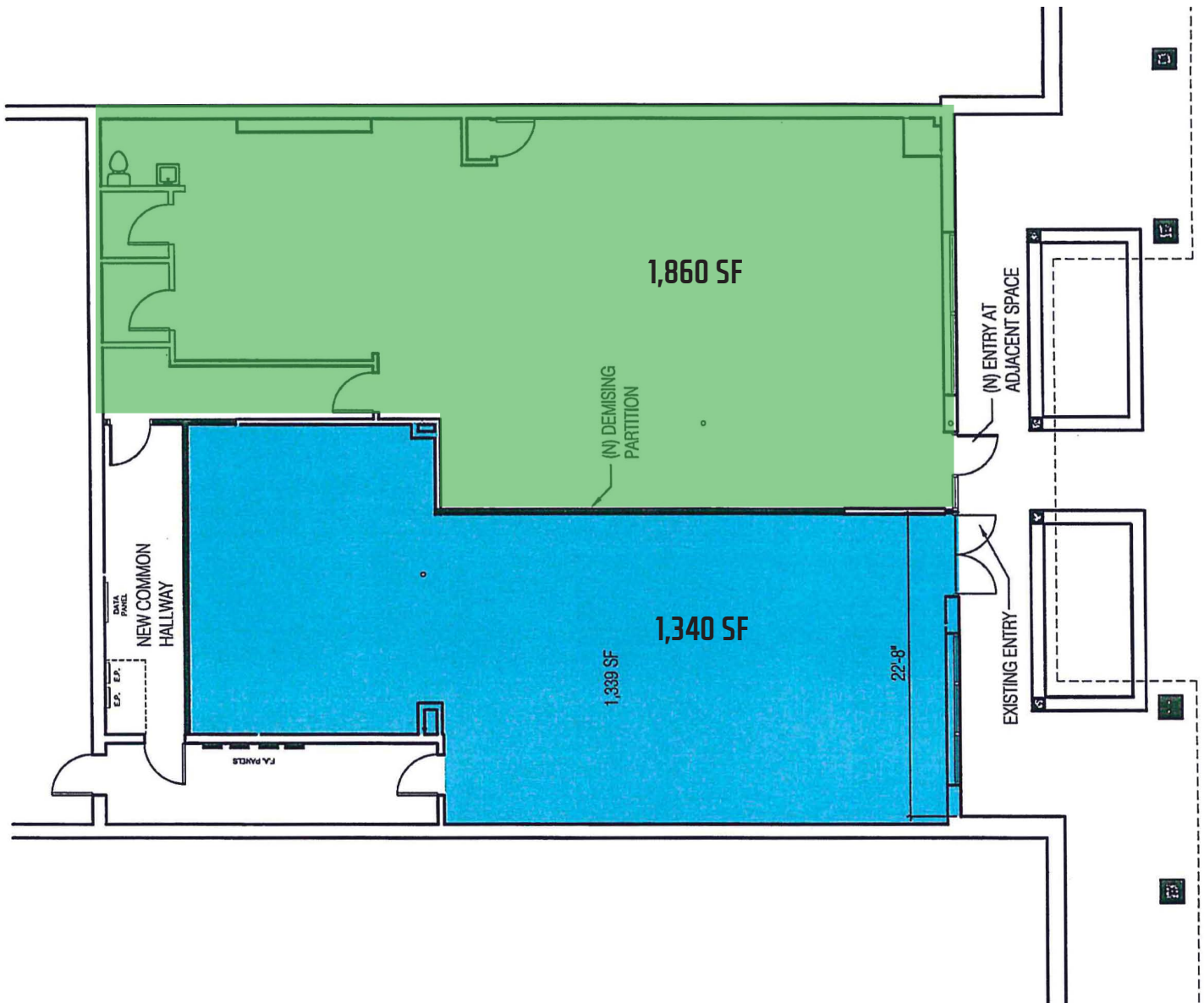
We are pleased to offer 1,340 - 3,200 SF of in-line retail space for lease at The Westgate Shopping Center. The 1,340± SF space can be combined with the 1,860± SF for a total of 3,200± SF. Westgate is a 92,000± SF grocery anchored shopping center located in the heart of one of Portland's most affluent neighborhoods. Anchor tenanted by Shaw's Supermarket, some other tenants include CVS, TD Bank, Northern Light Health, Pratt Abbott, and Dunkin Donuts. The center is located approximately .5 mile from I-295 and 1.5 miles to Portland Jetport and I-95.

Property Overview

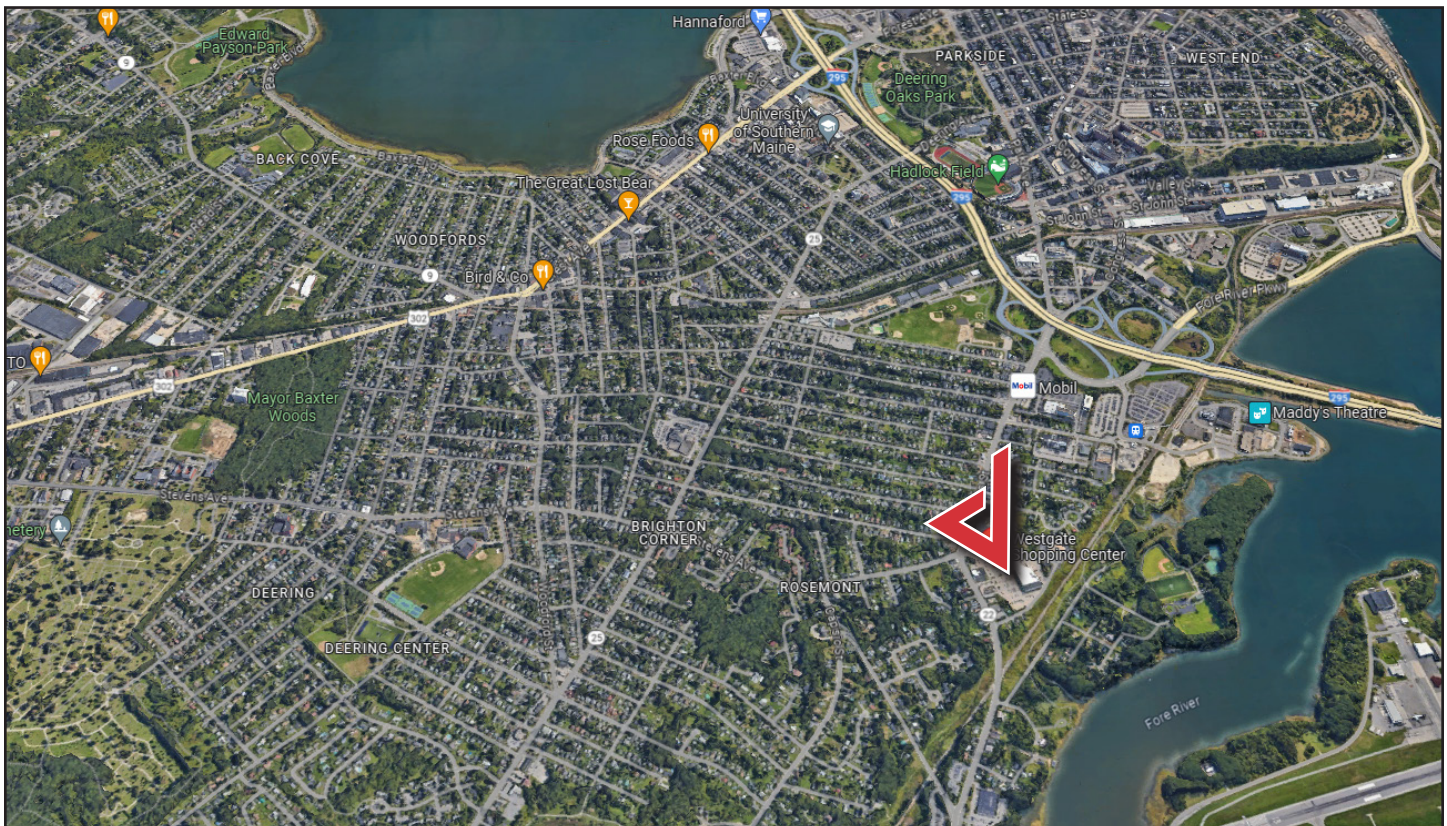
Owner	CP Westgate, LLC
Lot Size	10.1291± acres
Building Size	92,000 SF
Available Space	1,340 SF, 1,860 SF (can be combined for 3,200 SF)
Ceiling Height	16'
Assessor's Reference	Map 197, Block B, Lots 1, 15, 19
Zoning	B2 - Business Community
Year Built	1958
Utilities	Public water and sewer, natural gas
Parking	446± spaces, 5/1000 parking ratio
Road Frontage	1046'± on Congress Street
Traffic Counts	24,824± vehicles/day

FOR LEASE : SEE BROKER FOR PRICING

Westgate Shopping Center



Westgate Shopping Center



The information contained herein has been given to us by the owner of the property or other sources we deem reliable. We have no reason to doubt its accuracy, but we do not guarantee it. All information should be verified prior to purchase or lease.