

For Lease  
Industrial Space  
4,042± SF | \$8.00/SF NNN



## Highbay Industrial Space

135 Walton Street  
Portland, Maine

### Property Highlights

- Located on the corner of Walton Street and Canco Road
- 22' clear height
- Available June 1, 2019



### Property Description

We are pleased to offer this 4,042± SF high bay industrial space for lease at 135 Walton Street. The space offers ample parking, 22' ceiling heights and the potential for an overhead door or loading dock. Ideally located with easy access to all of Portland.

#### Broker Contact

Sylas Hatch

Tom Moulton, CCIM, SIOR

shatch@dunhamgroup.com

tmoulton@dunhamgroup.com

## Property Overview

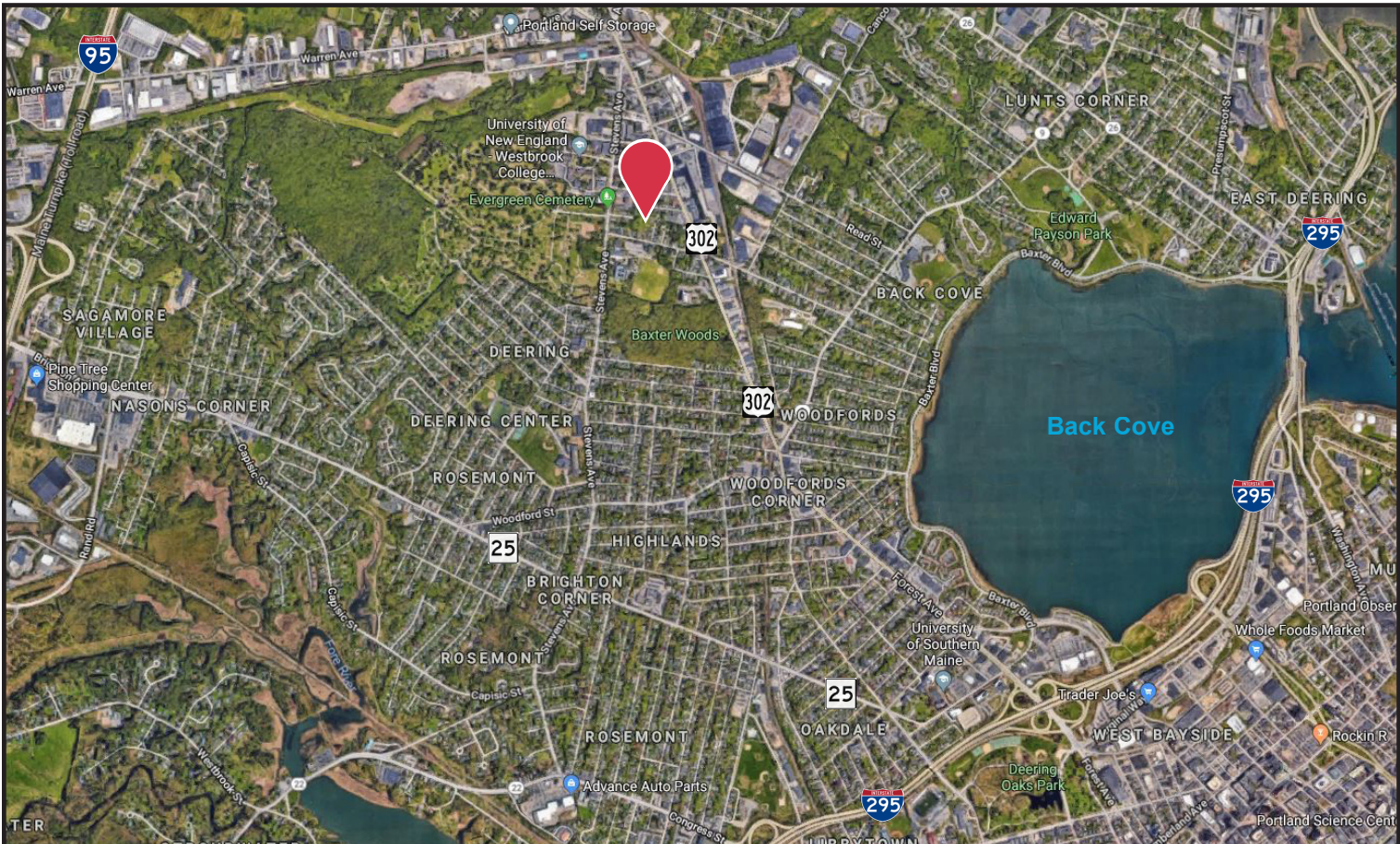
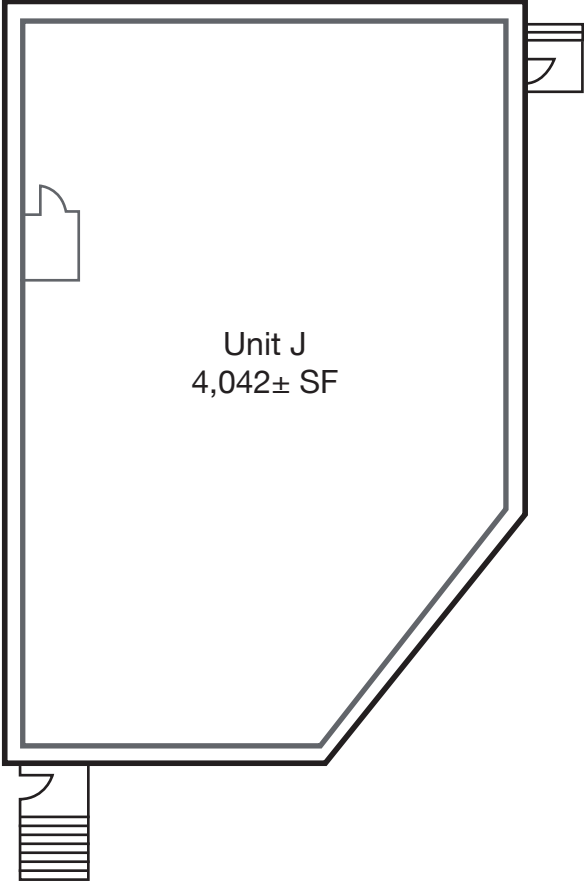
Building Size	56,018± SF
Lot Size	2.8± acres
Assessor's Reference	Map 142, Block I, Lot 1
Real Estate Taxes	\$34,488.68 (2017-2018)
Zoning	Industrial Moderate (IM)
Available Space	Unit J - 4,042± SF
Construction	Steel frame, metal siding
Roof	Flat, metal
Flooring	Concrete slab
Utilities	Municipal water and sewer
HVAC	Natural gas FHA
Loading Docks & OHDs	See broker
Bathroom	One (1) in suite
Sprinkler System	Wet system
Parking	Ample on-site
Available	June 1, 2019

FOR LEASE : \$8.00/SF NNN





# 135 Walton Street



The information contained herein has been given to us by the owner of the property or other sources we deem reliable. We have no reason to doubt its accuracy, but we do not guarantee it. All information should be verified prior to purchase or lease.