

FOR LEASE

Office/Retail/Commercial

10,000± SF | \$14.00/SF NNN



127 Main Street, South Portland, ME

Property Highlights

- Turn-key commercial building
- On-site parking
- High visibility on Main Street
- Multiple entrances make it easy to subdivide



Property Description

We are pleased to offer a 10,000± SF office/retail/commercial building for lease at 127 Main Street in South Portland. The property is easily accessible and offers on-site parking, and direct access from US Route One on Main Street. 127 Main Street is located minutes from I-295, Downtown Portland and the Portland International Jetport and 1½ miles from the Maine Turnpike/I-95 Connector Spur. Public bus stop in front of the building offers convenience for employees or clientele.

Tom Moulton, CCIM, SIOR | tmoulton@dunhamgroup.com

Katie Breggia | katie@dunhamgroup.com

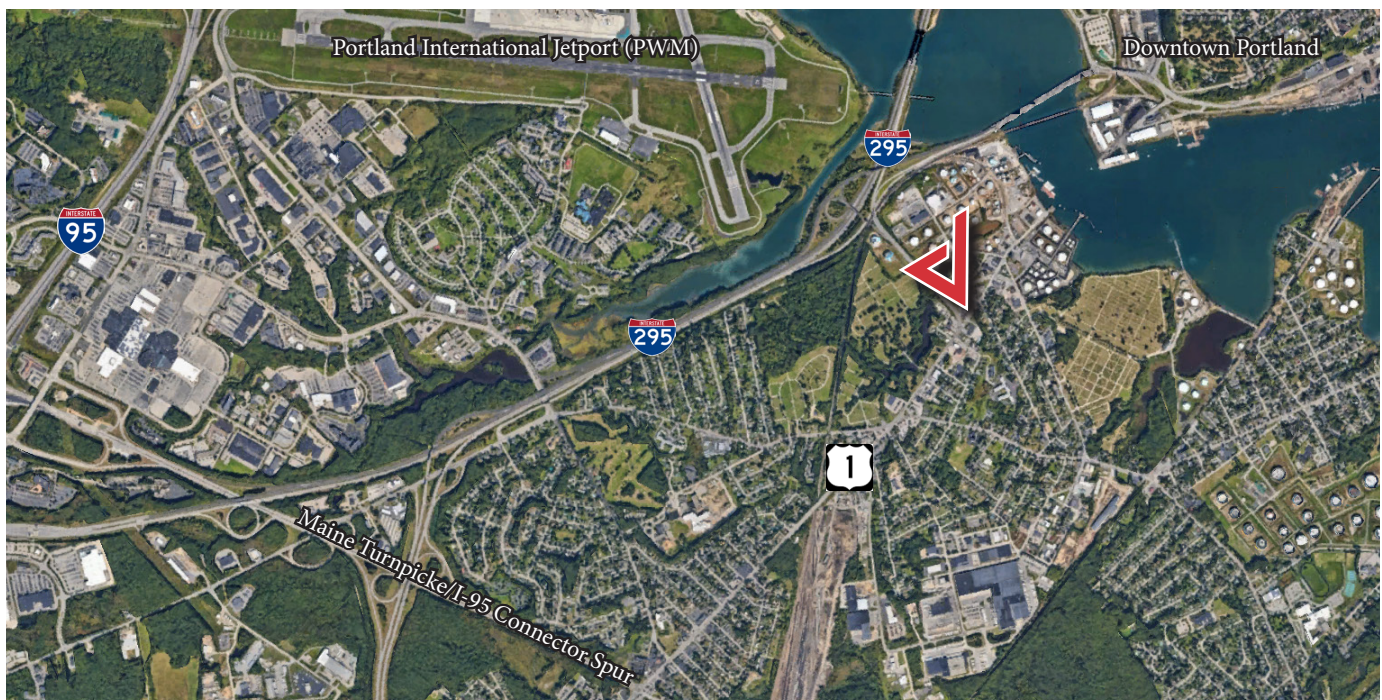
207.773.7100 | dunhamgroup.com



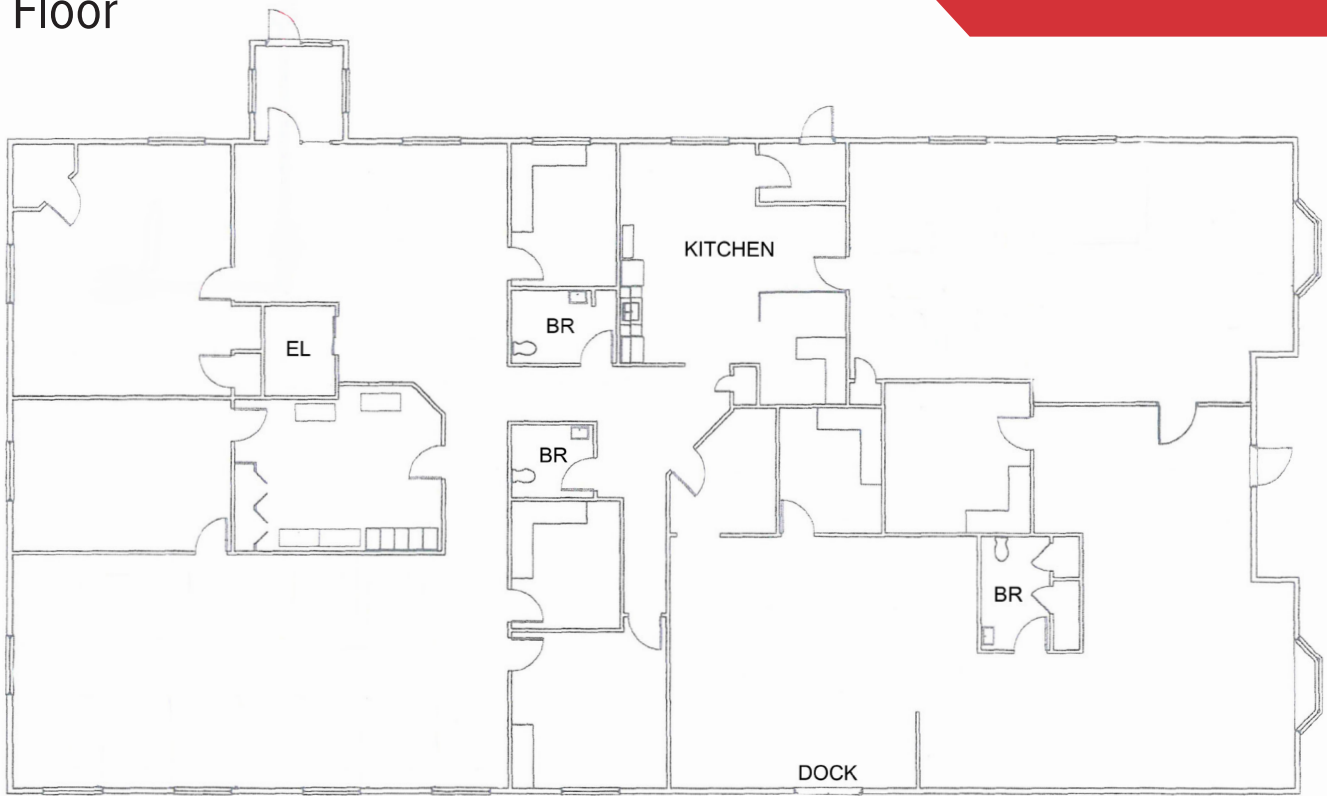
Property Overview

Building Size	10,000±SF - Subdivisible down to 2,880±SF First Floor : 7,120± SF Ground Level : 2,880± SF
Zoning	Commercial District (C)
Assessor's Reference	Map 32, Lot 16
Lot Size	0.5± acres
Year Built	1985
Construction	Wood frame
Utilities	Municipal water & sewer, natural gas, electric and telephone
Roof	Shingle, pitched
Siding	Clapboard
HVAC	Forced hot air & heat pumps; gas
Restrooms	Multiple
Electrical	200 Amps
Loading Dock	One (1)
Elevator	Yes
Signage	On building and on monument sign
Parking	On-site

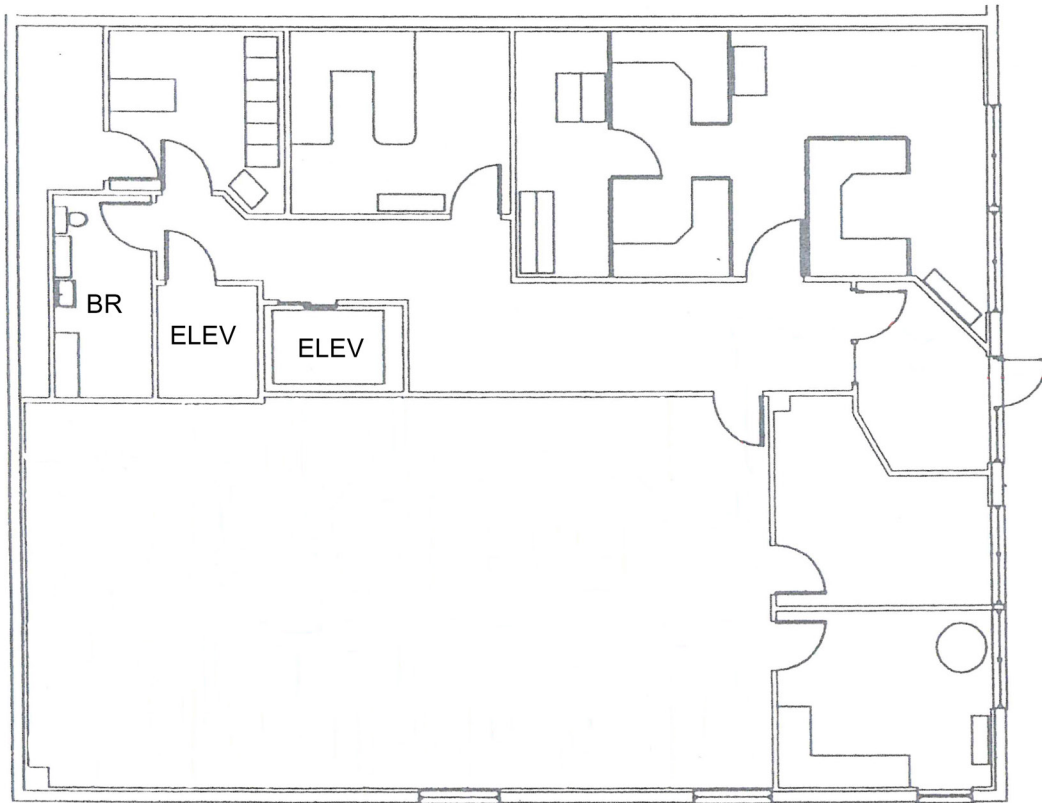
FOR LEASE : \$14.00/SF NNN - Estimated NNN's : \$4.00/SF



1st Floor



Ground Level



The information contained herein has been given to us by the owner of the property or other sources we deem reliable. We have no reason to doubt its accuracy, but we do not guarantee it. All information should be verified prior to purchase or lease.