

For Lease
Mixed-Use Building
5,000± SF | 1.15± acres



1125 Center Street

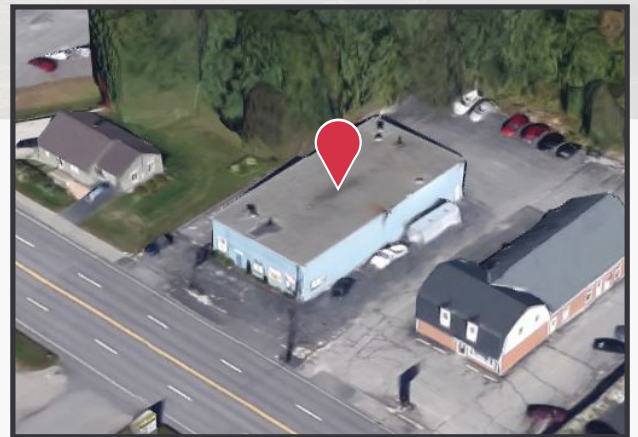
Auburn, ME 04210

Property Highlights

- 50'x100' building footprint
- One (1) 10'x10' drive-in overhead door
- Excellent visibility

Property Description

We are pleased to offer for lease 5,000± SF of mixed-use building at 1125 Center Street, Auburn. The property is located on highly trafficked Route 4/Center Street with excellent visibility. Ample on-site parking available.



Broker Contact

Chris Craig
207.773.7100
chriscraig@dunhamgroup.com

Property Overview

Owner	Lake Superior Corporation
Building Size	5,000± SF (50'×100')
Site Size	1.15± acres
Assessor's Reference	Map 325, lot 50
Zoning	General Business
Taxes	\$5,948 (2017-2018)
Space Breakdown	4,500± SF Warehouse; 500± SF Office
Building Age	1985
Building Construction	Metal building, metal siding
Roof	Metal
Floors	Concrete, tile
Ceiling Height	14'
Heat	Oil-fired suspended air heater
Utilities	Municipal water and sewer
Electricity	400 Amp
Lighting	LED
Overhead Door	One (1) 10×10 drive-in OHD
Bathroom	Two (2)
Parking	Ample on-site

FOR LEASE : \$8.00/SF NNN

