

# FOR LEASE

Office/Warehouse Space

3,880± SF | \$10.00/SF NNN



## 1039 Riverside Street, Portland

### Property Highlights

- *Nice mix of office and warehouse space*
- *Abundant power*



### Property Description

We are pleased to offer for lease 3,880± SF of office and warehouse space in the 1039 Riverside Complex.



### Broker Contact

Chris Craig

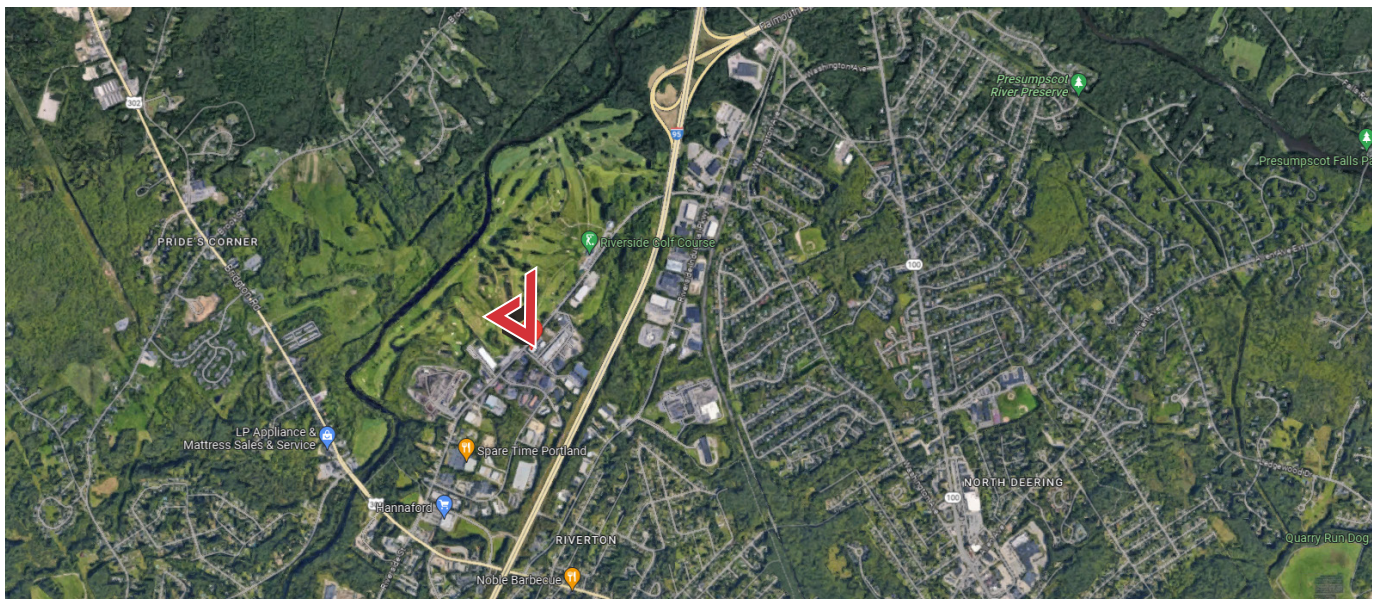
chris@dunhamgroup.com

207.773.7100

## Property Overview

Owner	1039 Riverside, LLC
Assessor's Reference	Map 331, Lot A-1
Building Size	58,807± SF
Available Space	3,880± SF
Space Breakdown	Office 1,000± SF Warehouse 2,880± SF
Building Age	Renovated in 2004
Zoning	Industrial (IM)
Building Construction	Steel frame
Flooring	Concrete & carpet
Ceiling Height	16' (warehouse)
Drive-in OHDs	One (1) 10' x 10'
Electrical	480 volt, 3-phase
Heat	Natural gas warm air
Lighting	LED fixtures
Sprinkler System	Yes
Bathrooms	Two (2)
Parking	Abundant, on-site
Available	Summer 2026

**FOR LEASE : \$10.00/SF NNN**  
**ESTIMATED NNN's : \$3.50/SF**





The information contained herein has been given to us by the owner of the property or other sources we deem reliable. We have no reason to doubt its accuracy, but we do not guarantee it. All information should be verified prior to purchase or lease.