

FOR LEASE

Office Space

533± SF | \$1,050.00/MONTH



10 Moulton Street, Portland

Property Highlights

- *Join Holy Donut and Liberty Graphics Co. in this excellent Old Port Location.*
- *Flexible office and retail layouts*



Property Description

We are pleased to offer for lease Suite 1031A at 10 Moulton Street. Suite 1031A is a 533± SF open second floor space. The Property is conveniently located in the heart of Portland's Old Port District.

Sam LeGeyt | sam@dunhamgroup.com
207.773.7100 | www.dunhamgroup.com



Property Overview

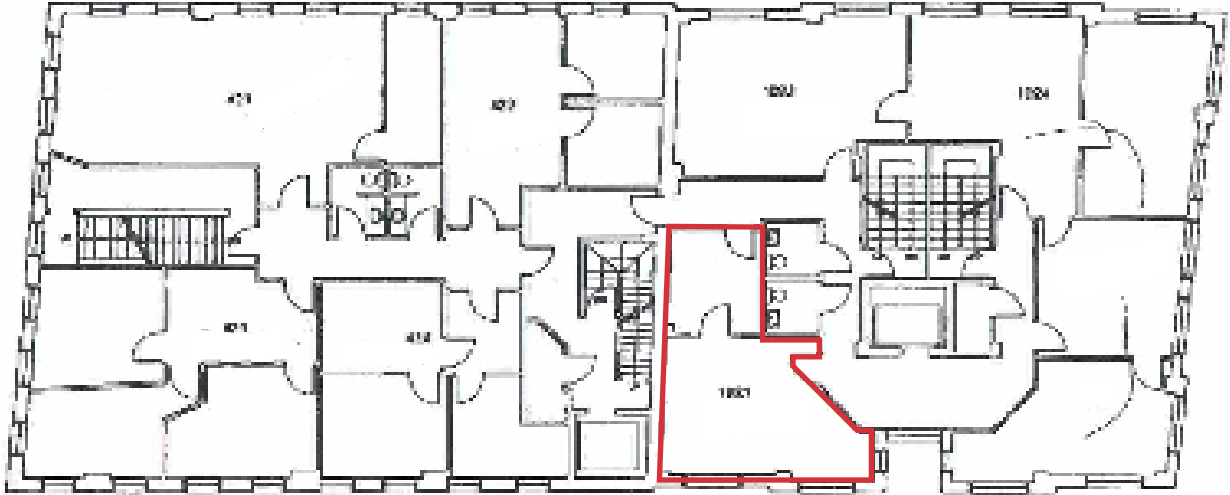
Building Size	11,500± SF
Land Size	0.28± acres
Assessor's Reference	Map 32, Block T, Lot 4
Zoning	Downtown Business (B-3) Old Port Overlay Downtown Entertainment Overlay
Available Space	Suite 1031A: 533± SF Second Floor Retail Space
Year Built	1900
Building Construction	Brick and stone
Utilities	Public water and sewer
Bathrooms	Men's and Women's in common per floor
Signage	Interior directory and Suite identification

FOR LEASE : \$1,050.00/MONTH

Tenant is responsible for heat, electric, and telecommunications.



Suite 1031A
533± SF



The information contained herein has been given to us by the owner of the property or other sources we deem reliable. We have no reason to doubt its accuracy, but we do not guarantee it. All information should be verified prior to purchase or lease.