

For Lease
Office/Retail Space
632 & 650 ± SF



10 Moulton Street Portland, Maine

Property Highlights

- Join Holy Donut and Liberty Graphics Co. in this excellent Old Port Location.
- Flexible office and retail layouts



Property Description

We are pleased to offer for lease three suites at 10 Moulton Street. Suite 1013 is a 632± SF open first floor space and Suite 1024 is a 650±SF open second floor office space. The Property is conveniently located in the heart of Portland's Old Port District.

Broker Contact

Sam LeGeyt
207.773.7100
sam@dunhamgroup.com



10 Dana Street, Suite 400
Portland, ME 04101
207.773.7100
dunhamgroup.com

Property Overview

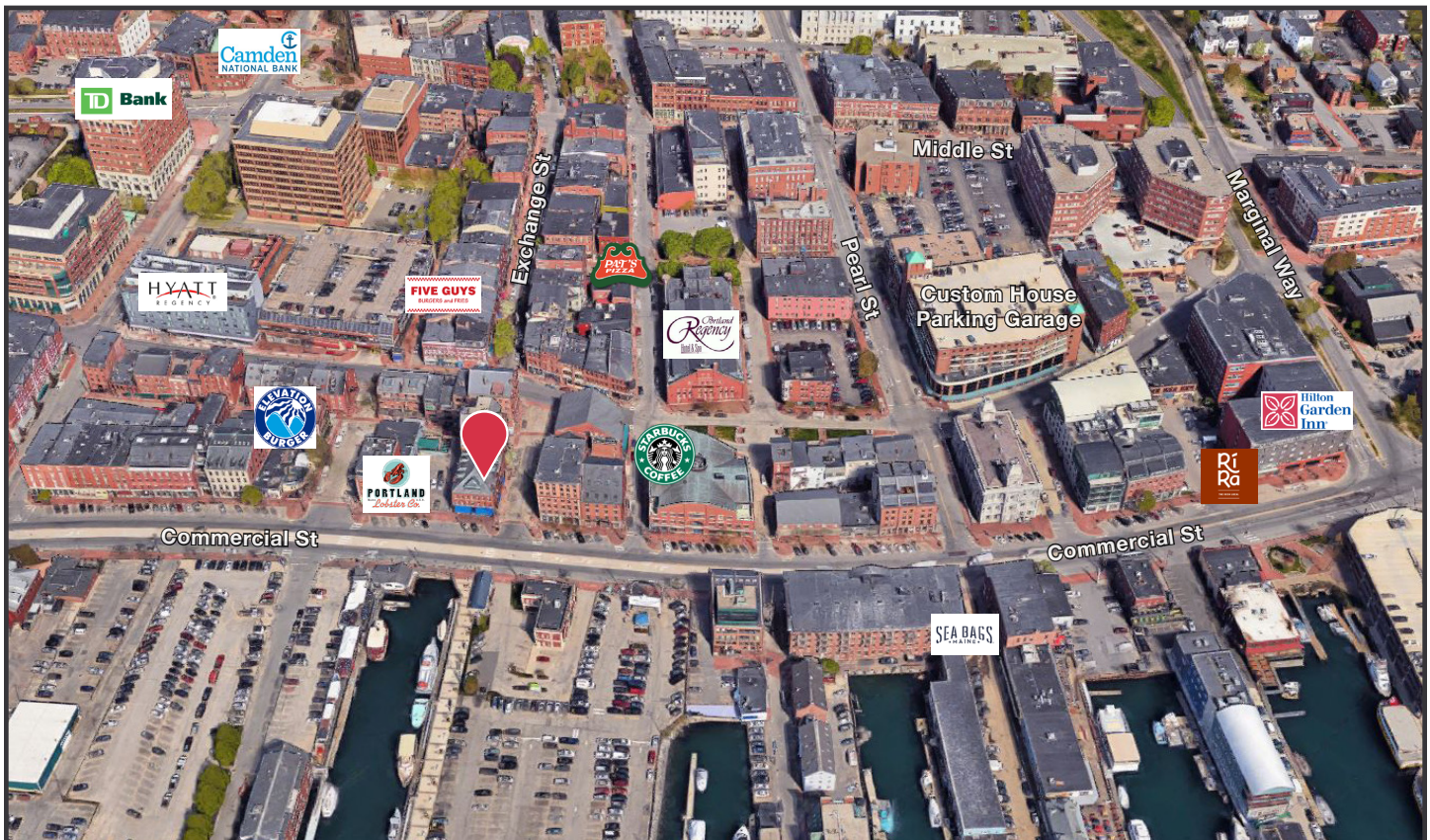
Building Size	11,500± SF
Land Size	0.28± acres
Assessor's Reference	Map 32, Block T, Lot 4
Zoning	Downtown Business (B-3) Old Port Overlay Downtown Entertainment Overlay
Available Space	Suite 1013 - 632± SF First Floor Retail Space Suite 1024 - 650± SF Second Floor Office Space
Year Built	1900
Building Construction	Brick and stone
Utilities	Public water and sewer
Bathrooms	One (1) designated bathroom for each suite
Signage	Available: facing Moulton St.
Availability	See Broker

SUITE 1013 : \$1,740/month MG

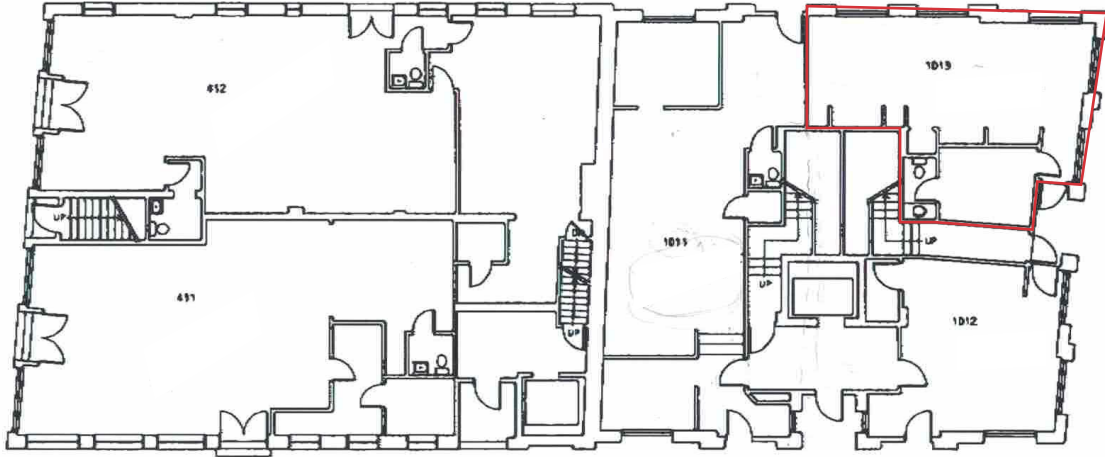
SUITE 1024 : \$900/month MG

SUITE 1050 : \$22/SF MG

Tenant is responsible for heat, electric, and telecommunications.



Suite 1013
632± SF



Suite 1024
650± SF

