

For Lease
Office Space
533 & 2,387 SF



10 Moulton Street

Portland, Maine

Property Highlights

- Office space with excellent Old Port views
- Elevator Access
- Ideal Old Port location on historic cobble stone street

Property Description

We are pleased to offer 533± SF and 2,387± SF office spaces for lease at 10 Moulton Street. Located in the heart of Portland's Old Port, the property is surrounded by restaurants, retail stores, coffee shops and other amenities.



Broker Contact

Sam LeGeyt

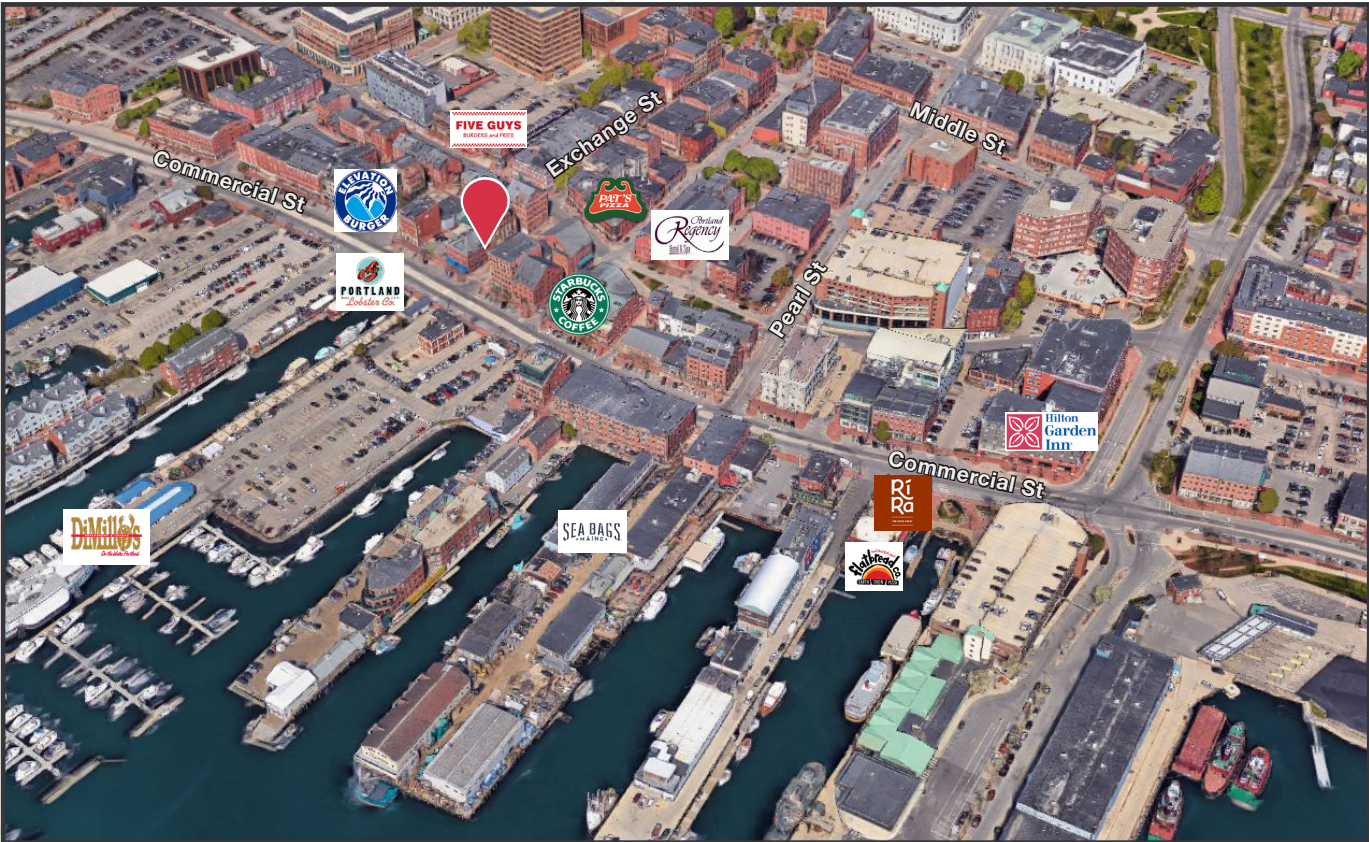
207.773.7100

sam@dunhamgroup.com

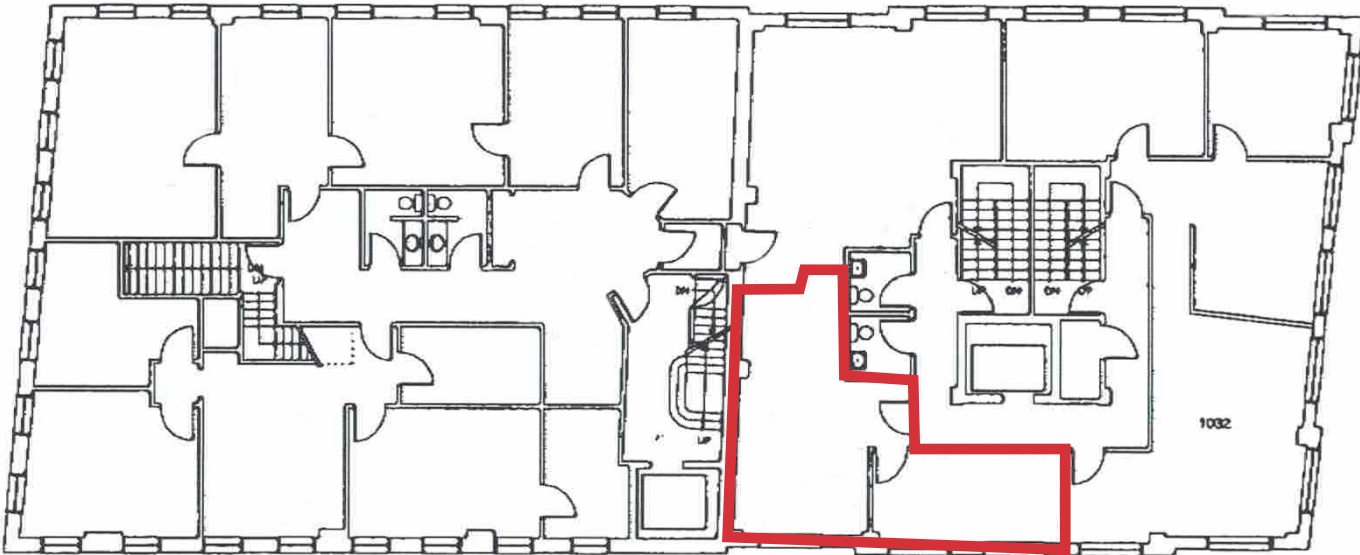
Property Overview

Building Size	11,500± SF
Land Size	0.28± acres
Assessor's Reference	Map 32, Block T, Lot 4
Zoning	Downtown Business (B-3)
Available Space	Suite 1031A - 533± SF, 3rd floor Suite 1050 - 2,387± SF, 5th floor
Year Built	1900
Building Construction	Brick and stone
Flooring	Carpet
Utilities	Public water and sewer
Elevator	Yes, common access
Bathrooms	Two (2)
Signage	Available on tenant directory in lobby

FOR LEASE : \$22.00/SF MG
Tenant is responsible for electric and increases over base year



3rd Floor - 533± SF



5th Floor - 2,387± SF

